

**CITY OF PRINCE GEORGE**  
**BYLAW NO. 8737**

A Bylaw of the City of Prince George to permanently close a portion of road located at 857 Wolczuk Road and to remove its highway dedication for the purpose of future disposal of the lands.

**WHEREAS** the Council of the City of Prince George deems it desirable that an approximate 0.43 acres (0.175 hectares) of road dedicated on Plan 1360, District Lot 2166, and part of road dedicated on Plan 9233, District Lot 823, Cariboo District, be closed to traffic, and that the highway dedication thereof be removed;

**AND WHEREAS**, in accordance with section 40 of the *Community Charter*, notice of intention to adopt this bylaw has been delivered, posted and published, and an opportunity has been provided for persons who consider they are affected by this bylaw to make representations to Council;

**NOW THEREFORE** the Council of the City of Prince George, in open meeting assembled, **ENACTS AS FOLLOWS:**

1. That the portion of highway dedicated on Plan 1360, District Lot 2166, and part of road dedicated on Plan 9233, District Lot 823, Cariboo District, as shown outlined in bold black on the Reference Plan EPP71563 attached hereto as Appendix "A" and forming part of this Bylaw, is closed to traffic.
2. That the dedication of the portion of highway dedicated by Plan 1360, District Lot 2166, and part of road dedicated on Plan 9233, District Lot 823, Cariboo District, as shown outlined in bold black on the Reference Plan EPP71563, attached hereto as Appendix "A" and forming part of this Bylaw, is removed.
3. The Mayor and Corporate Officer are hereby empowered to do all things necessary to give effect to this Bylaw.
4. This Bylaw shall come into full force and take effect upon its adoption and shall be filed with the Registrar of the applicable Land Title Office.
5. This Bylaw may be cited for all purposes as "857 Wolczuk Road Closure Bylaw No. 8737, 2017".

READ A FIRST TIME THIS 29<sup>th</sup> DAY OF MAY , 2017.

READ A SECOND TIME THIS 29<sup>th</sup> DAY OF MAY , 2017.

First two readings passed by a UNANIMOUS decision of Members of City Council present and eligible to vote.

READ A THIRD TIME THIS DAY OF , 2017.

Third reading passed by a decision of Members of City Council present and eligible to vote.

Certified correct as passed third reading, this day of , 2017.

\_\_\_\_\_  
CORPORATE OFFICER OF  
THE CITY OF PRINCE GEORGE

ADOPTED THIS DAY OF , 2017,  
BY A DECISION OF ALL MEMBERS OF CITY COUNCIL PRESENT AND  
ELIGIBLE TO VOTE.

\_\_\_\_\_  
MAYOR

\_\_\_\_\_  
DEPUTY CORPORATE OFFICER

REFERENCE PLAN TO ACCOMPANY ROAD CLOSURE  
 BY-LAW No. 8737 (PRINCE GEORGE) TO CLOSE PART  
 OF ROAD DEDICATED ON PLAN 1360, DISTRICT LOT 2166,  
 AND PART OF ROAD DEDICATED ON PLAN 9233,  
 DISTRICT LOT 823, CARIBOO DISTRICT.

PLAN EPP71563

PURSUANT TO SECTION 120 OF THE LAND TITLE ACT AND SECTION 40  
 OF THE COMMUNITY CHARTER.

INTEGRATED SURVEY AREA No. 39 PRINCE GEORGE, BC, NAD83 (CSRS) 4.0.0.BC.1

BCGS 93G.097



THE INTENDED PLOT SIZE OF THIS PLAN IS 432mm IN WIDTH BY 560mm IN  
 HEIGHT (C SIZE) WHEN PLOTTED AT A SCALE OF 1:1250.

ALL DISTANCES ARE IN METRES AND DECIMALS THEREOF.

GRID BEARINGS ARE DERIVED FROM OBSERVATIONS BETWEEN GEODETIC  
 CONTROL MONUMENTS 86H1596 AND 86H1577.

THE UTM COORDINATES AND ESTIMATED HORIZONTAL POSITIONAL  
 ACCURACY ACHIEVED HAVE BEEN DERIVED FROM MASCOT PUBLISHED  
 COORDINATES AND STANDARD DEVIATIONS FOR GEODETIC CONTROL  
 MONUMENT 86H1596.

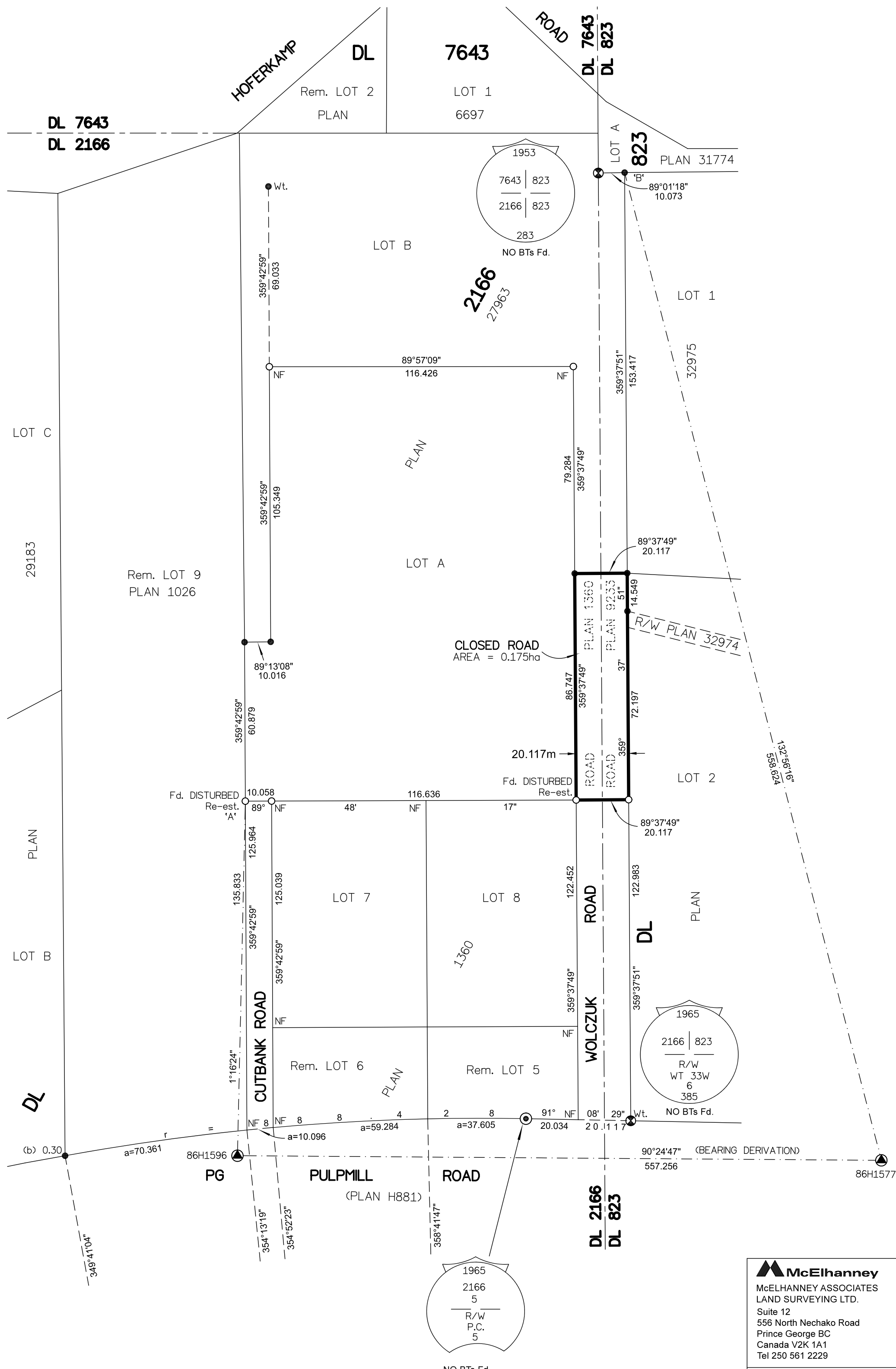
THIS PLAN SHOWS HORIZONTAL GROUND-LEVEL DISTANCES UNLESS  
 OTHERWISE SPECIFIED. TO COMPUTE GRID DISTANCES, MULTIPLY  
 GROUND-LEVEL DISTANCES BY THE AVERAGE COMBINED FACTOR OF  
 0.9995161 WHICH HAS BEEN DERIVED FROM GEODETIC CONTROL MONUMENT  
 86H1596.

**LEGEND**

SYMBOLS		DESCRIPTION
FOUND	PLACED	
▲	○	CONTROL MONUMENT
●	○	STANDARD IRON POST
⊙		STANDARD CONCRETE POST
⊗		STANDARD CAPPED POST
CSF		COMBINED SCALE FACTOR
EHPA		ESTIMATED HORIZONTAL POSITIONAL ACCURACY
(b)		BURIED

NOTE:  
 THIS PLAN SHOWS ONE OR MORE WITNESS POSTS  
 WHICH ARE NOT SET ON THE TRUE CORNER(S).

GEOREFERENCING POSITIONS UTM COORDINATES, ZONE 10, NAD 83 (CSRS), 4.0.0.BC.1				
STATION	NORTHING	EASTING	EHPA	CSF
PLIP'A'	5975873.50	516810.14	0.12m	0.9995161
Fd.IP'B'	5976114.10	516955.33	0.12m	0.9995161



THE ASSOCIATION OF BC LAND SURVEYORS HAS GRANTED RELIEF FROM  
 COMPLIANCE WITH GSI RULE 5-4(2) FOR THIS SURVEY SINCE THE STANDARD  
 DEVIATIONS OF THE ISA MONUMENTS DO NOT MEET THE REQUIREMENTS OF  
 SAID RULE.

THE FIELD SURVEY REPRESENTED BY THIS PLAN WAS COMPLETED  
 ON THE 27th DAY OF MARCH, 2017  
 SHAUNA C. GOERTZEN, BCLS 798

THIS PLAN LIES WITHIN THE REGIONAL DISTRICT OF FRASER-FORT GEORGE.

**McElhanney**  
 McELHANNEY ASSOCIATES  
 LAND SURVEYING LTD.  
 Suite 12  
 556 North Nechako Road  
 Prince George BC  
 Canada V2K 1A1  
 Tel 250 561 2229

File No. 2341-6535-RC