

CITY OF PRINCE GEORGE
BYLAW NO. 8857

A Bylaw of the City of Prince George to permanently close a portion of road located adjacent to 1755 Foothills Boulevard and to remove its highway dedication for the purpose of future disposal of the lands.

WHEREAS the Council of the City of Prince George deems it desirable that an approximate .357 hectares (.88 acre) of road dedicated on Plan 837, District Lot 2508, Cariboo District (Reference Plan EPP72102) be closed to traffic, and that the highway dedication thereof be removed;

AND WHEREAS, in accordance with section 40 of the *Community Charter*, notice of intention to adopt this bylaw has been delivered, posted and published, and an opportunity has been provided for persons who consider they are affected by this bylaw to make representations to Council;

NOW THEREFORE the Council of the City of Prince George, in open meeting assembled, **ENACTS AS FOLLOWS:**

1. That the portion of highway dedicated on Plan 837, District Lot 2508, Cariboo District, as shown outlined in bold black on the Reference Plan EPP72102 attached hereto as Appendix "A" and forming part of this Bylaw, is closed to traffic.
2. That the dedication of the portion of highway dedicated by Plan 837, District Lot 2508, Cariboo District, as shown outlined in bold black on the Reference Plan EPP72102, attached hereto as Appendix "A" and forming part of this Bylaw, is removed.
3. The Mayor and Corporate Officer are hereby empowered to do all things necessary to give effect to this Bylaw.
4. This Bylaw shall come into full force and take effect upon its adoption and shall be filed with the Registrar of the applicable Land Title Office.
5. This Bylaw may be cited for all purposes as "1755 Foothills Road Closure Bylaw No. 8857, 2017".

READ A FIRST TIME THIS DAY OF , 2017.

READ A SECOND TIME THIS DAY OF , 2017.

First two readings passed by a decision of Members of City Council present and eligible to vote.

READ A THIRD TIME THIS DAY OF , 2017.

Third reading passed by a decision of Members of City Council present and eligible to vote.

Certified correct as passed third reading, this day of , 2017.

CORPORATE OFFICER OF
THE CITY OF PRINCE GEORGE

ADOPTED THIS DAY OF , 2017,
BY A DECISION OF ALL MEMBERS OF CITY COUNCIL PRESENT AND
ELIGIBLE TO VOTE.

MAYOR

CORPORATE OFFICER

REFERENCE PLAN TO ACCOMPANY ROAD CLOSURE, BY-LAW No. 8857 (PRINCE GEORGE), TO CLOSE ROAD DEDICATED ON PLAN 837, DISTRICT LOT 2508, CARIBOO DISTRICT.

PLAN EPP72102

PURSUANT TO SECTION 120 OF THE LAND TITLE ACT AND SECTION 40 OF THE COMMUNITY CHARTER.

INTEGRATED SURVEY AREA No. 39 PRINCE GEORGE, BC, NAD83 (CSRS) 4.0.0.BC.1

BCGS 93G.096



THE INTENDED PLOT SIZE OF THIS PLAN IS 560mm IN WIDTH BY 432mm IN HEIGHT (C SIZE) WHEN PLOTTED AT A SCALE OF 1:750.

ALL DISTANCES ARE IN METRES AND DECIMALS THEREOF.

GRID BEARINGS ARE DERIVED FROM OBSERVATIONS BETWEEN GEODETIC CONTROL MONUMENTS 85H1310 AND 85H1206.

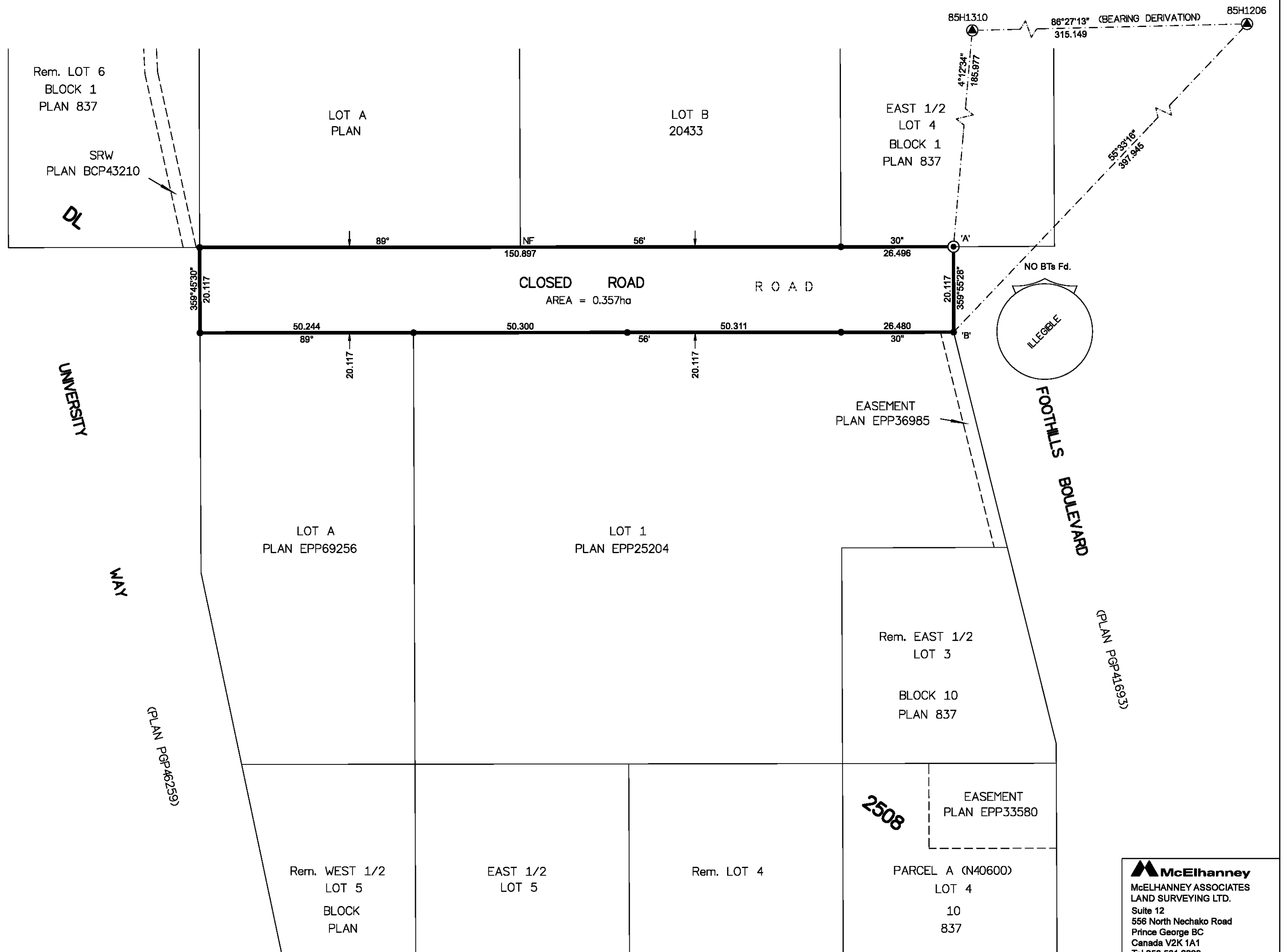
THE UTM COORDINATES AND ESTIMATED HORIZONTAL POSITIONAL ACCURACY ACHIEVED HAVE BEEN DERIVED FROM MASCOT PUBLISHED COORDINATES AND STANDARD DEVIATIONS FOR GEODETIC CONTROL MONUMENT 85H1310.

THIS PLAN SHOWS HORIZONTAL GROUND-LEVEL DISTANCES UNLESS OTHERWISE SPECIFIED. TO COMPUTE GRID DISTANCES, MULTIPLY GROUND-LEVEL DISTANCES BY THE COMBINED FACTOR OF 0.9995089 WHICH HAS BEEN DERIVED FROM GEODETIC CONTROL MONUMENT 85H1310.

LEGEND

SYMBOLS		DESCRIPTION
FOUND	PLACED	
		CONTROL MONUMENT
		STANDARD IRON POST
		STANDARD CONCRETE POST
CSF		COMBINED SCALE FACTOR
EHPA		ESTIMATED HORIZONTAL POSITIONAL ACCURACY

GEOREFERENCING POSITIONS UTM COORDINATES, ZONE 10, NAD 83 (CSRS), 4.0.0.BC.1				
STATION	NORTHING	EASTING	EHPA	CSF
Fd. P.Con 'A'	5973363.51	512358.67	0.10	0.9995089
Fd. IP 'B'	5973343.40	512358.70	0.10	0.9995089



APPENDIX "A" to Bylaw No. 8857

THE ASSOCIATION OF BC LAND SURVEYORS HAS GRANTED RELIEF FROM COMPLIANCE WITH GSI RULE 5-4(2) FOR THIS SURVEY SINCE THE STANDARD DEVIATIONS OF THE ISA MONUMENTS DO NOT MEET THE REQUIREMENTS OF SAID RULE.

THE FIELD SURVEY REPRESENTED BY THIS PLAN WAS COMPLETED ON THE 11TH DAY OF JANUARY, 2017
SHAUNA C. GOERTZEN, BCLS 798

THIS PLAN LIES WITHIN THE REGIONAL DISTRICT OF FRASER-FORT GEORGE.

McElhanney
 McELHANNEY ASSOCIATES
 LAND SURVEYING LTD.
 Suite 12
 556 North Nechako Road
 Prince George BC
 Canada V2K 1A1
 Tel 250 561 2229
 File No. 2341-6532-RC