

REFERENCE PLAN OF CONSOLIDATION OF LOT 1, PLAN EPP18683,
 LOT 2, PLAN EPP18683, EXCEPT PLAN EPP28637, AND CLOSED ROAD,
 PLAN EPP66493, ALL IN DISTRICT LOT 8180, CARIBOO DISTRICT.

PURSUANT TO SECTION 100(1)(b) OF THE LAND TITLE ACT.

INTEGRATED SURVEY AREA No. 39 PRINCE GEORGE, BC, NAD83 (CSRS) 4.0.0.BC.1
 BCGS 93G.087



THE INTENDED PLOT SIZE OF THIS PLAN IS 560mm IN WIDTH BY 432mm IN HEIGHT (C SIZE) WHEN PLOTTED AT A SCALE OF 1:750

ALL DISTANCES ARE HORIZONTAL GROUND-LEVEL AND ARE SHOWN IN METRES AND DECIMALS THEREOF, UNLESS OTHERWISE INDICATED.

GRID BEARINGS ARE DERIVED FROM PREVIOUSLY INTEGRATED PLAN EPP50758.

THE UTM COORDINATES AND ESTIMATED HORIZONTAL POSITIONAL ACCURACY ACHIEVED HAVE BEEN DERIVED FROM PREVIOUSLY INTEGRATED PLAN EPP50758.

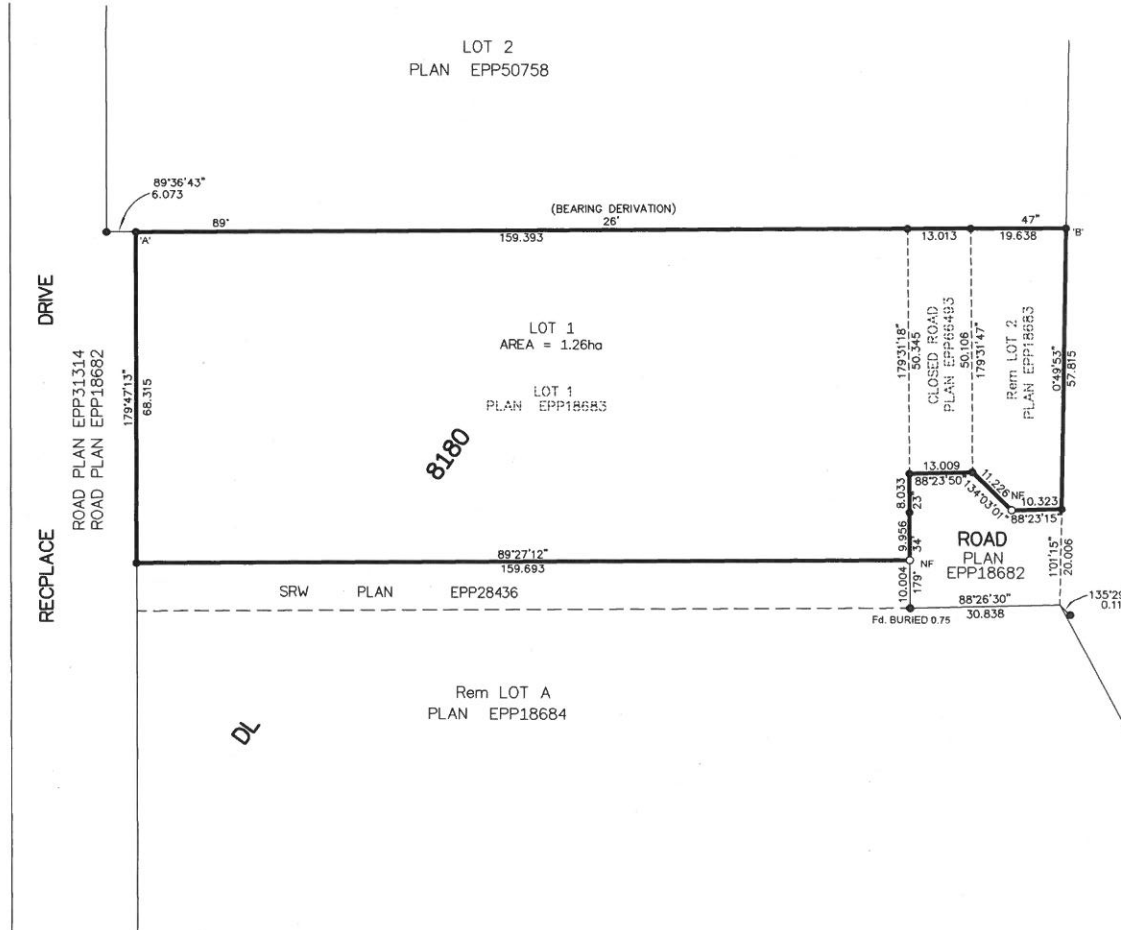
THIS PLAN SHOWS HORIZONTAL GROUND-LEVEL DISTANCES UNLESS OTHERWISE SPECIFIED. TO COMPUTE GRID DISTANCES, MULTIPLY GROUND-LEVEL DISTANCES BY THE AVERAGE COMBINED FACTOR OF 0.9995118 WHICH HAS BEEN FROM PREVIOUSLY INTEGRATED PLAN EPP50758.

NOTE:
 SOME POSTS AND LINES HAVE BEEN EXAGGERATED FOR CLARITY.

LEGEND

SYMBOLS		DESCRIPTION
FOUND	PLACED	
●	○	STANDARD IRON POST
CSF		COMBINED SCALE FACTOR
EHPA		ESTIMATED HORIZONTAL POSITIONAL ACCURACY

GEOREFERENCING POSITIONS UTM COORDINATES, ZONE 10, NAD 83 (CSRS), 4.0.0.BC.1				
STATION	NORTHING	EASTING	EHPA	CSF
Fd. IP 'A'	5971785.05	515061.86	0.05	0.9995118
Fd. IP 'B'	5971786.90	515253.80	0.05	0.9995128



YELLOWHEAD HIGHWAY No. 16 WEST
 PLANS H735, 22207, PGP37876, PGP43039,
 EPP18683, EPP28636, EPP28637, EPP28638 AND EPP43542

THE FIELD SURVEY REPRESENTED BY THIS PLAN WAS COMPLETED
 ON THE 25TH DAY OF OCTOBER, 2016
 DARREN KENT, BCLS 904

THIS PLAN LIES WITHIN THE REGIONAL DISTRICT OF FRASER-FORT GEORGE

McElhanney
 McELHANNEY ASSOCIATES
 LAND SURVEYING LTD.
 Suite 12
 556 North Nechako Road
 Prince George BC
 Canada V2K 1A1
 Tel 250 561 2229
 File No. 2341-6516-C