

REFERENCE PLAN TO ACCOMPANY ROAD CLOSURE
 BY-LAW No. 8737 (PRINCE GEORGE) TO CLOSE PART
 OF ROAD DEDICATED ON PLAN 1360, DISTRICT LOT 2166,
 AND PART OF ROAD DEDICATED ON PLAN 9233,
 DISTRICT LOT 823, CARIBOO DISTRICT.

PLAN EPP71563

PURSUANT TO SECTION 120 OF THE LAND TITLE ACT AND SECTION 40
 OF THE COMMUNITY CHARTER.

INTEGRATED SURVEY AREA No. 39 PRINCE GEORGE, BC, NAD83 (CSRS) 4.0.0.BC.1

BCGS 93G.097



THE INTENDED PLOT SIZE OF THIS PLAN IS 432mm IN WIDTH BY 560mm IN
 HEIGHT (C SIZE) WHEN PLOTTED AT A SCALE OF 1:1250.

ALL DISTANCES ARE IN METRES AND DECIMALS THEREOF.

GRID BEARINGS ARE DERIVED FROM OBSERVATIONS BETWEEN GEODETIC
 CONTROL MONUMENTS 86H1596 AND 86H1577.

THE UTM COORDINATES AND ESTIMATED HORIZONTAL POSITIONAL
 ACCURACY ACHIEVED HAVE BEEN DERIVED FROM MASCOT PUBLISHED
 COORDINATES AND STANDARD DEVIATIONS FOR GEODETIC CONTROL
 MONUMENT 86H1596.

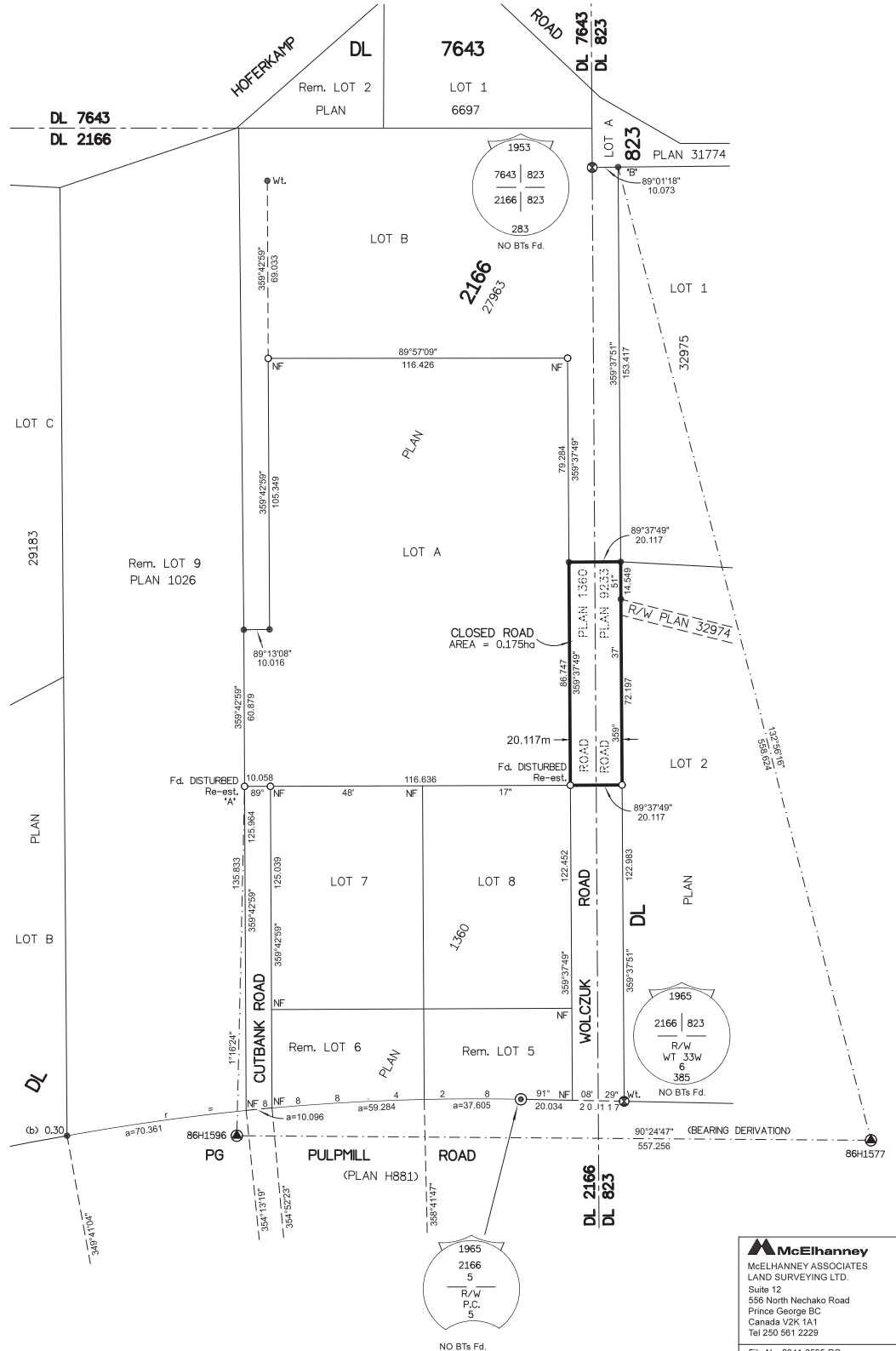
THIS PLAN SHOWS HORIZONTAL GROUND-LEVEL DISTANCES UNLESS
 OTHERWISE SPECIFIED. TO COMPUTE GRID DISTANCES, MULTIPLY
 GROUND-LEVEL DISTANCES BY THE AVERAGE COMBINED FACTOR OF
 0.9995161 WHICH HAS BEEN DERIVED FROM GEODETIC CONTROL MONUMENT
 86H1596.

LEGEND

SYMBOLS		DESCRIPTION
FOUND	PLACED	
⊙	○	CONTROL MONUMENT
●	○	STANDARD IRON POST
⊙	○	STANDARD CONCRETE POST
⊙	○	STANDARD CAPPED POST
CSF		COMBINED SCALE FACTOR
EHPA		ESTIMATED HORIZONTAL POSITIONAL ACCURACY
(b)		BURIED

NOTE:
 THIS PLAN SHOWS ONE OR MORE WITNESS POSTS
 WHICH ARE NOT SET ON THE TRUE CORNER(S).

GEOREFERENCING POSITIONS				
UTM COORDINATES, ZONE 10, NAD 83 (CSRS), 4.0.0.BC.1				
STATION	NORTHING	EASTING	EHPA	CSF
Pl.IP'A	5975873.50	516810.14	0.12m	0.9995161
Fd.IP'B	5976114.10	516955.33	0.12m	0.9995161



THE ASSOCIATION OF BC LAND SURVEYORS HAS GRANTED RELIEF FROM
 COMPLIANCE WITH GSI RULE 5-4(2) FOR THIS SURVEY SINCE THE STANDARD
 DEVIATIONS OF THE ISA MONUMENTS DO NOT MEET THE REQUIREMENTS OF
 SAID RULE.

THE FIELD SURVEY REPRESENTED BY THIS PLAN WAS COMPLETED
 ON THE 27th DAY OF MARCH, 2017
 SHAUNA C. GOERTZEN, BCLS 798

THIS PLAN LIES WITHIN THE REGIONAL DISTRICT OF FRASER-FORT GEORGE.

McElhanney
 McELHANNEY ASSOCIATES
 LAND SURVEYING LTD.
 Suite 12
 556 North Nechako Road
 Prince George BC
 Canada V2K 1A1
 Tel 250 561 2229

File No. 2341-6535-RC