

**CITY OF PRINCE GEORGE**  
**BYLAW NO. 8849**

**A Bylaw of the City of Prince George to permanently close a portion of road located adjacent to Giscome Road and to remove its highway dedication for the purpose of future disposal of lands.**

**WHEREAS** the Council of the City of Prince George deems it desirable that an approximate 0.15 acres (597.4 metres squared (m<sup>2</sup>)) of road dedicated on Plan 24137, District Lot 633, Cariboo District be closed to traffic, and that the highway dedication thereof be removed;

**AND WHEREAS**, in accordance with section 40 of the *Community Charter*, notice of intention to adopt this bylaw has been delivered, posted and published, and an opportunity has been provided for persons who consider they are affected by this bylaw to make representations to Council;

**NOW THEREFORE** the Council of the City of Prince George, in open meeting assembled, **ENACTS AS FOLLOWS:**

1. That the portion of highway dedicated on Plan 24137, District Lot 633, Cariboo District, as shown outlined in bold black on Appendix "A", attached to and forming part of this Bylaw, is closed.
2. That the dedication of the portion of highway dedicated by Plan 24137, District Lot 633, Cariboo District, as shown outlined in bold black on Appendix "A", attached to and forming part of this Bylaw, is removed.
3. The Mayor and Corporate Officer are hereby empowered to do all things necessary to give effect to this Bylaw.
4. This Bylaw shall come into full force and take effect upon its adoption and shall be filed with the Registrar of the applicable Land Title Office.
5. This Bylaw may be cited for all purposes as "Giscome Road Closure Bylaw No. 8849, 2017".

READ A FIRST TIME THIS 4<sup>th</sup> DAY OF DECEMBER , 2017.

READ A SECOND TIME THIS 4<sup>th</sup> DAY OF DECEMBER , 2017.

First two readings passed by a UNANIMOUS decision of Members of City Council present and eligible to vote.

READ A THIRD TIME THIS 18<sup>th</sup> DAY OF DECEMBER , 2017.

Third reading passed by a UNANIMOUS decision of Members of City Council present and eligible to vote.

Certified correct as passed third reading, this 19<sup>th</sup> day of December , 2017.

*W. B. Q.*

CORPORATE OFFICER OF THE CITY OF PRINCE GEORGE

ADOPTED THIS BY A AND ELIGIBLE TO VOTE.

DAY OF , 2018, DECISION OF ALL MEMBERS OF CITY COUNCIL PRESENT

MAYOR

CORPORATE OFFICER

**REFERENCE PLAN TO ACCOMPANY ROAD CLOSURE,  
BY-LAW No. 8849 (PRINCE GEORGE), TO CLOSE ROAD  
DEDICATED ON PLAN 24137, DISTRICT LOT 633,  
CARIBOO DISTRICT.**

PLAN EPP77158

PURSUANT TO SECTION 120 OF THE LAND TITLE ACT AND SECTION 40  
OF THE COMMUNITY CHARTER.

INTEGRATED SURVEY AREA No. 39 PRINCE GEORGE, BC, NAD83 (CSRS) 4.0.0.BC.1  
BOGS 83G.087



THE INTENDED PLOT SIZE OF THIS PLAN IS 600mm IN WIDTH BY 432mm IN  
HEIGHT (C SIZE) WHEN PLOTTED AT A SCALE OF 1:300.

ALL DISTANCES ARE IN METRES AND DECIMALS THEREOF.

GRID BEARINGS ARE DERIVED FROM OBSERVATIONS BETWEEN GEODETIC  
CONTROL MONUMENTS 85H1279 AND 85H1834.

THE UTM COORDINATES AND ESTIMATED HORIZONTAL POSITIONAL  
ACCURACY ACHIEVED HAVE BEEN DERIVED FROM MASCOT PUBLISHED  
COORDINATES AND STANDARD DEVIATIONS FOR GEODETIC CONTROL  
MONUMENT 85H1279.

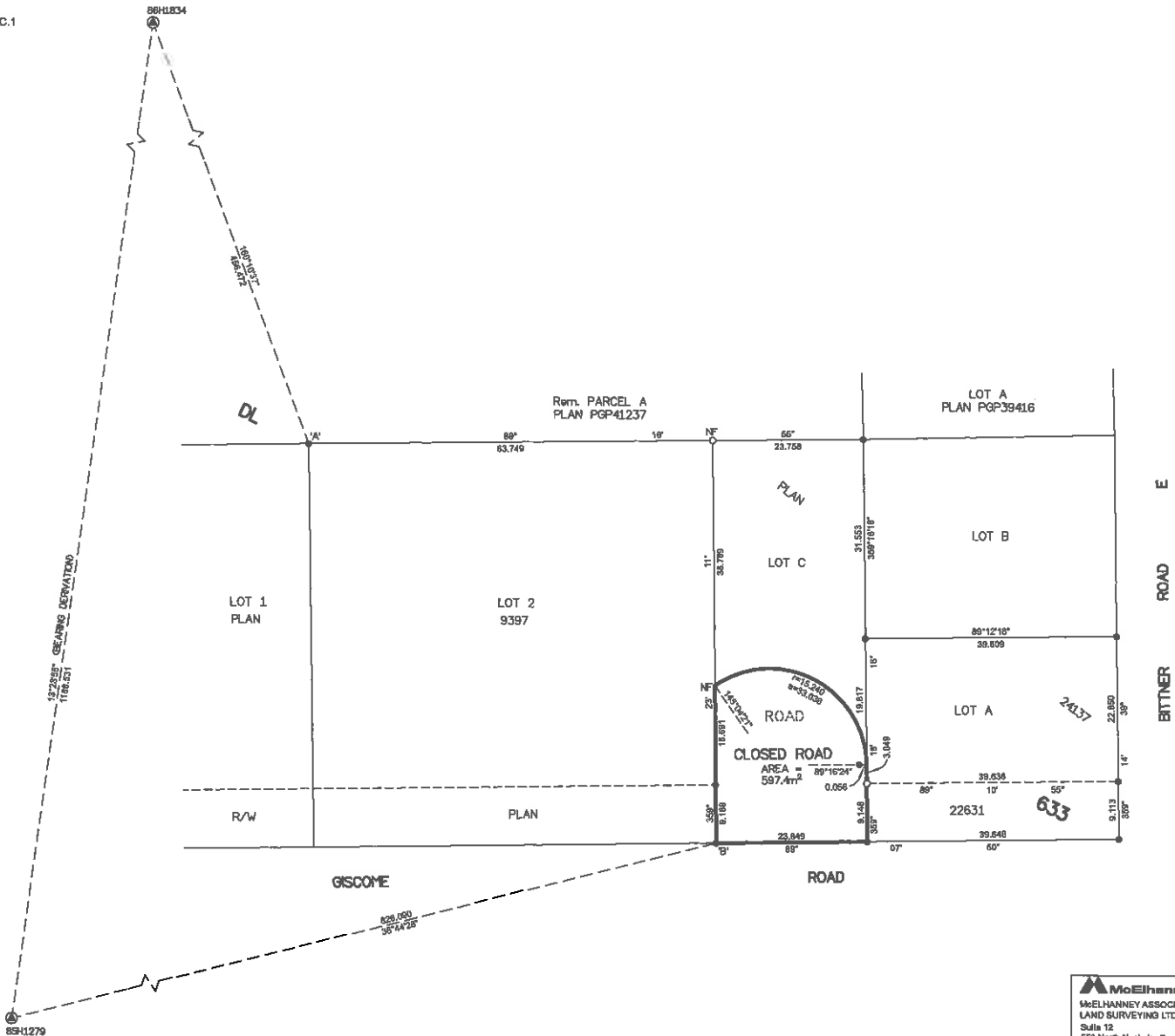
THIS PLAN SHOWS HORIZONTAL GROUND-LEVEL DISTANCES UNLESS  
OTHERWISE SPECIFIED. TO COMPUTE GRID DISTANCES, MULTIPLY  
GROUND-LEVEL DISTANCES BY THE AVERAGE COMBINED FACTOR OF  
0.995033 WHICH HAS BEEN DERIVED FROM CONTROL MONUMENTS 85H1279  
AND 85H1834.

NOTE:  
SOME POSTS ARE EXAGGERATED FOR CLARITY.

**LEGEND**

SYMBOLS FOUND	DESCRIPTION PLACED
⊙	CONTROL MONUMENT
●	STANDARD IRON POST
CSF	COMBINED SCALE FACTOR
EHPA	ESTIMATED HORIZONTAL POSITIONAL ACCURACY

GEOREFERENCING POSITIONS UTM COORDINATES, ZONE 10, NAD 83 (CSRS), 4.0.0.BC.1				
STATION	NORTHING	EASTING	EHPA	CSF
Fd. IP 'A'	5972354.28	524019.61	0.12	0.8895027
Fd. IP 'B'	5972291.45	524034.00	0.12	0.8895027



THE ASSOCIATION OF BC LAND SURVEYORS HAS GRANTED RELIEF FROM  
COMPLIANCE WITH GSI RULE 5-4(2) FOR THIS SURVEY SINCE THE STANDARD  
DEVIATIONS OF THE ISA MONUMENTS DO NOT MEET THE REQUIREMENTS OF  
SAID RULE.

THE FIELD SURVEY REPRESENTED BY THIS PLAN WAS COMPLETED  
ON THE 10th DAY OF OCTOBER, 2017  
SHAUNA C. GOERTZEN, BCLS 798

THIS PLAN LIES WITHIN THE REGIONAL DISTRICT OF FRASER-FORT GEORGE.

**McElhanney**  
McELHANNEY ASSOCIATES  
LAND SURVEYING LTD.  
Suite 12  
559 North Nechako Road  
Prince George BC  
Canada V2K 1A1  
Tel 250 561 8288  
File No. 2341-8819-RC

APPENDIX "A" to Bylaw No. 8849