

CITY OF PRINCE GEORGE
BYLAW NO. 8983

A Bylaw of the City of Prince George to permanently close a portion of road located near Ospika Boulevard and Gogolin Road to remove its highway dedication for the purpose of future disposal of lands.

WHEREAS the Council of the City of Prince George deems it desirable that an approximate 112.6 square metres (m²) (1212 square feet (ft²)) of road dedicated on Plan PGP30304 be closed to traffic, and that the highway dedication thereof be removed;

AND WHEREAS, in accordance with section 40 of the *Community Charter*, notice of intention to adopt this bylaw has been delivered, posted and published, and an opportunity has been provided for persons who consider they are affected by this bylaw to make representations to Council;

NOW THEREFORE the Council of the City of Prince George, in open meeting assembled, **ENACTS AS FOLLOWS:**

1. That the portion of highway dedicated by Plan PGP30304, District Lot 1433, Cariboo District, as shown outlined in bold black on Reference Plan EPP87840, attached hereto as Appendix "A" and forming part of this Bylaw, is closed to traffic.
2. That the dedication of the portion of highway dedicated by Plan PGP30304, District Lot 1433, Cariboo District, as shown outlined in bold black on Reference Plan EPP87840, attached hereto as Appendix "A" and forming part of this Bylaw, is removed.
3. The Mayor and Corporate Officer are hereby empowered to do all things necessary to give effect to this Bylaw.
4. This Bylaw shall come into full force and take effect upon its adoption and shall be filed with the Registrar of the applicable Land Title Office.
5. This Bylaw may be cited for all purposes as "Ospika – Gogolin Road Closure Bylaw No. 8983, 2018".

READ A FIRST TIME THIS DAY OF 2018

READ A SECOND TIME THIS DAY OF 2018

First two readings passed by a decision of Member of City Council present and eligible to vote.

READ A THIRD TIME THIS DAY OF 2018

Third reading passed by a decision of Member of City Council present and eligible to vote.

Certified correct as passed third reading this day of 2018

CORPORATE OFFICER OF
THE CITY OF PRINCE GEORGE

APPROVED BY THE MINISTER OF TRANSPORTATION AND INFRASTRUCTURE PURSUANT TO THE PROVISIONS OF SECTION 41(3) OF THE COMMUNITY CHARTER

THIS DAY OF 2018

for MINISTER OF TRANSPORTATION
AND INFRASTRUCTURE

ADOPTED THIS DAY OF 2018,
BY A DECISION OF ALL MEMBERS OF CITY COUNCIL PRESENT AND
ELIGIBLE TO VOTE

MAYOR

CORPORATE OFFICER

REFERENCE PLAN TO ACCOMPANY BYLAW NO. 8983 OF THE CITY OF PRINCE GEORGE, HIGHWAY CLOSURE AND DEDICATION REMOVAL OF A PORTION OF OSPIKA BLVD AS SHOWN ON PLAN PGP30304 DISTRICT LOT 1433 CARIBOO DISTRICT

PURSUANT TO SECTION 120 OF THE LAND TITLE ACT AND SECTION 40 OF THE COMMUNITY CHARTER
 INTEGRATED SURVEY AREA No. 39 PRINCE GEORGE, BC NAD83(CSRS) 4.0.0.BC.1

BOOK OF REFERENCE:

Description:	Area:
CLOSED ROAD DEDICATED ON PLAN PGP30304	112.6 m ²
Total:	112.6 m ²

BCGS 93G.087



THE INTENDED PLOT SIZE OF THIS PLAN IS 560mm IN WIDTH BY 432mm IN HEIGHT (C SIZE) WHEN PLOTTED AT A SCALE OF 1:300

GRID BEARINGS ARE DERIVED FROM OBSERVATIONS BETWEEN GEODETIC CONTROL MONUMENTS 86H1838 AND 86H1753.

THE UTM COORDINATES AND ESTIMATED HORIZONTAL POSITIONAL ACCURACY ACHIEVED HAVE BEEN DERIVED FROM MASCOT PUBLISHED COORDINATES AND STANDARD DEVIATIONS FOR GEODETIC CONTROL MONUMENTS 86H1838 AND 86H1753.

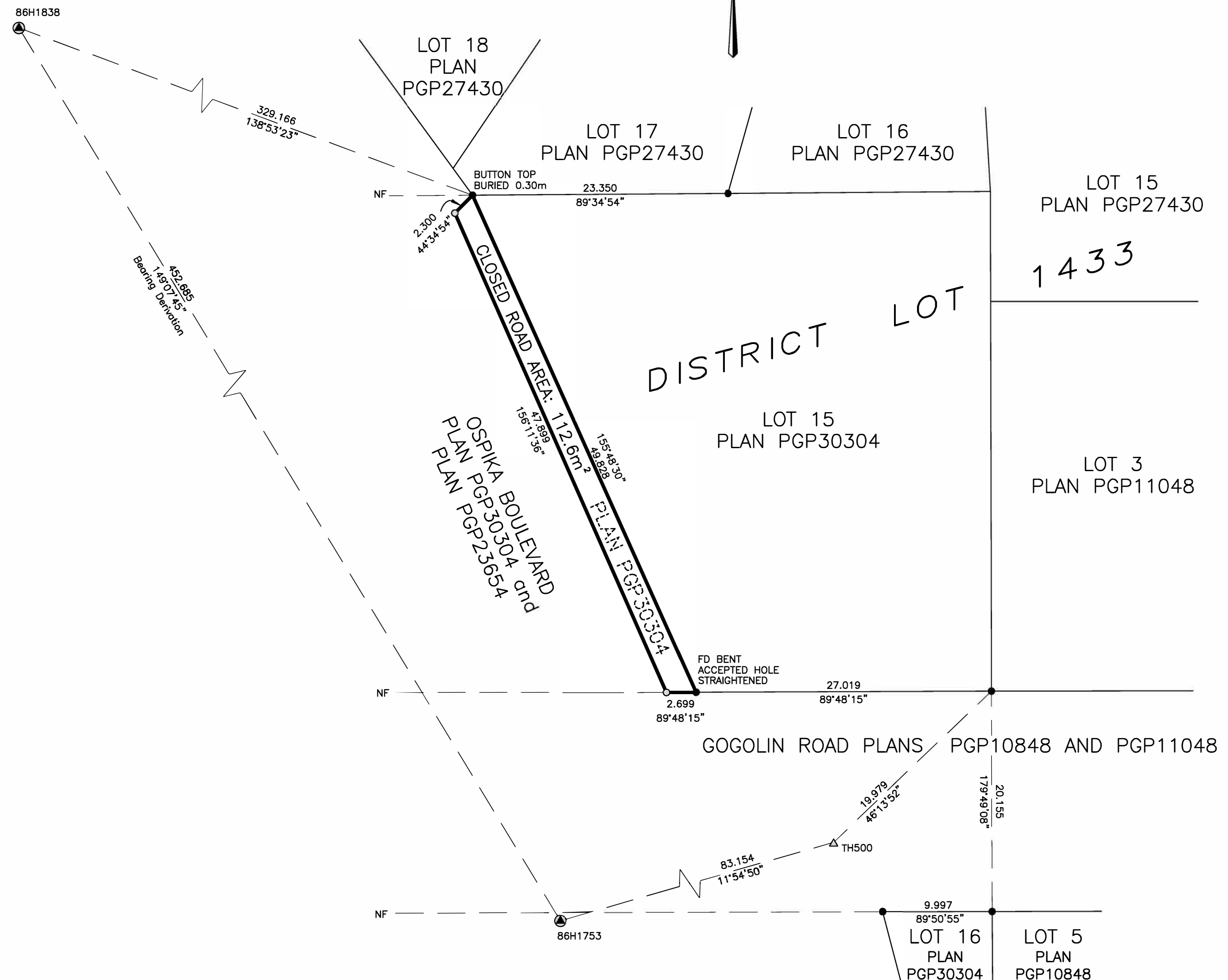
THIS PLAN SHOWS HORIZONTAL GROUND-LEVEL DISTANCES UNLESS OTHERWISE SPECIFIED. TO COMPUTE GRID DISTANCES, MULTIPLY GROUND-LEVEL DISTANCES BY THE AVERAGE COMBINED FACTOR OF 0.999508 WHICH HAS BEEN DERIVED FROM CONTROL MONUMENT 86H1753.

LEGEND:

SYMBOLS	DESCRIPTION
FOUND	PLACED
●	○
△	
CF	
EHPA	

CONTROL MONUMENT
 STANDARD IRON POST
 TRAVERSE HUB
 COMBINED FACTOR
 ESTIMATED HORIZONTAL POSITIONAL ACCURACY

UTM ZONE 10 COORDINATES NAD83(CSRS) 4.0.0.BC.1				
STATION (GCM)	NORTHING	EASTING	CF	EHPA
86H1753	5970304.62	514358.28	0.999508	0.10
86H1838	5970692.93	514126.08	0.999511	0.10
TH500	5970385.94	514375.44	0.999511	0.10



HBH FILE No. CPG1804

HBH LAND SURVEYING INC.
 PRINCE GEORGE, BC
 PHONE: (250) 640-2287
 SMITHERS, BC
 PHONE: (250) 847-3808
 BCLS@HBHLandSurveying.ca

THE FIELD SURVEY REPRESENTED BY THIS PLAN WAS COMPLETED ON THE 24th DAY OF OCTOBER, 2018
 GINA MP HIBBER, BCLS 871

THIS PLAN LIES WITHIN THE REGIONAL DISTRICT OF FRASER-FORT GEORGE.
 THIS PLAN LIES WITHIN THE CITY OF PRINCE GEORGE.

APPENDIX "A"