

REFERENCE PLAN OF ROAD CLOSURE TO ACCOMPANY BY-LAW No. 8988,
(PRINCE GEORGE) CLOSING A PORTION OF ROAD DEDICATED ON PLAN 9567,
DISTRICT LOT 2003, CARIBOO DISTRICT.

PLAN EPP86922

PURSUANT TO SECTION 120 OF THE LAND TITLE ACT AND
SECTION 40 OF THE COMMUNITY CHARTER.

INTEGRATED SURVEY AREA No. 39 PRINCE GEORGE, BC, NAD83 (CSRS) 4.0.0.BC.1
BCGS 93G.087



THE INTENDED PLOT SIZE OF THIS PLAN IS 560mm IN WIDTH BY 432mm IN
HEIGHT (C SIZE) WHEN PLOTTED AT A SCALE OF 1:1000.

ALL DISTANCES ARE IN METRES AND DECIMALS THEREOF.

GRID BEARINGS ARE DERIVED FROM OBSERVATIONS BETWEEN GEODETIC
CONTROL MONUMENTS 86H1561 AND 86H1706.

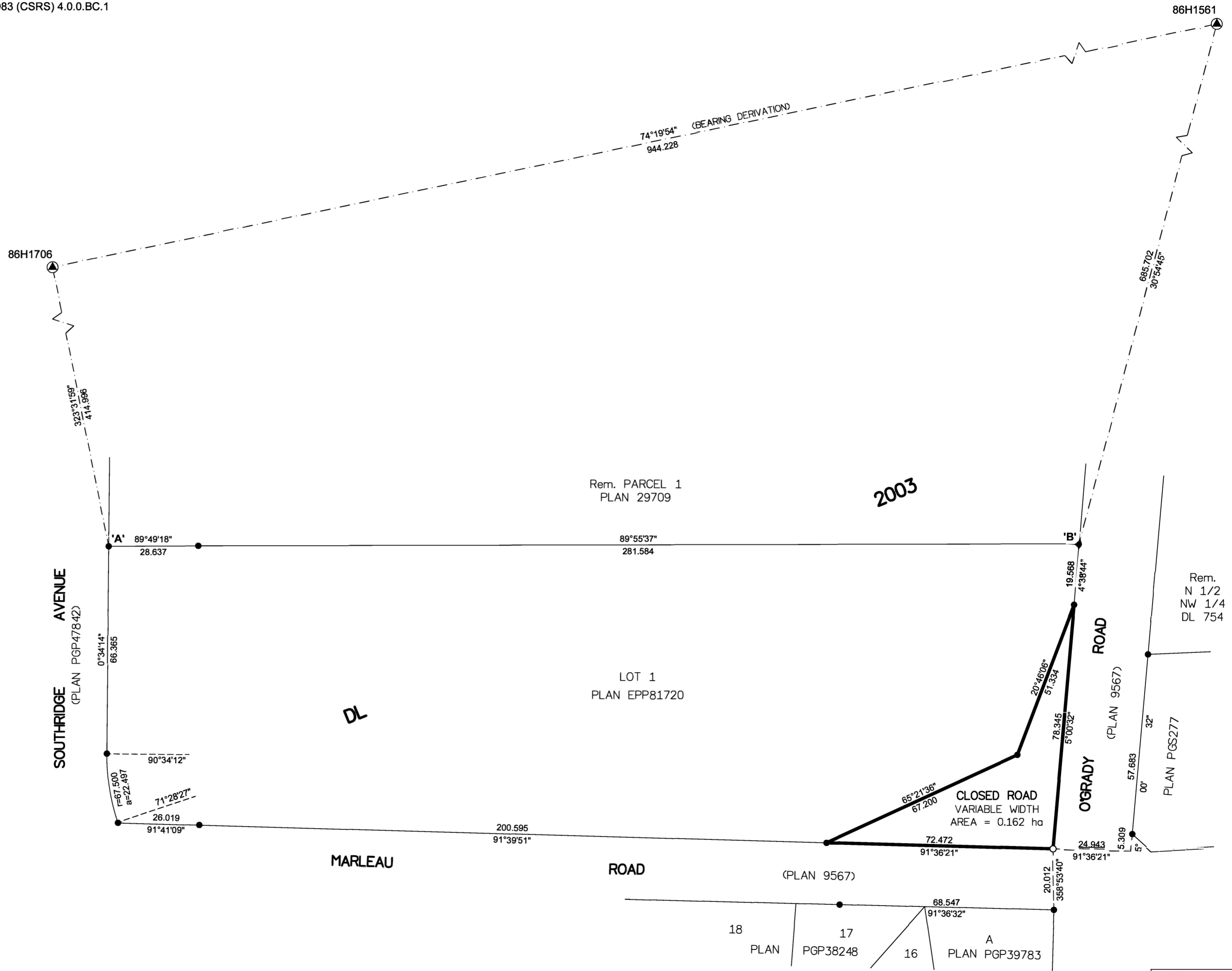
THE UTM COORDINATES AND ESTIMATED HORIZONTAL POSITIONAL
ACCURACY ACHIEVED HAVE BEEN DERIVED FROM MASCOT PUBLISHED
COORDINATES AND STANDARD DEVIATIONS FOR GEODETIC CONTROL
MONUMENT 86H1706.

THIS PLAN SHOWS HORIZONTAL GROUND-LEVEL DISTANCES UNLESS
OTHERWISE SPECIFIED. TO COMPUTE GRID DISTANCES, MULTIPLY
GROUND-LEVEL DISTANCES BY THE AVERAGE COMBINED FACTOR OF
0.9995015 WHICH HAS BEEN DERIVED FROM CONTROL MONUMENTS 86H1561
AND 86H1706.

LEGEND

SYMBOLS		DESCRIPTION
FOUND	PLACED	
▲	○	CONTROL MONUMENT
●	○	STANDARD IRON POST
CSF		COMBINED SCALE FACTOR
EHPA		ESTIMATED HORIZONTAL POSITIONAL ACCURACY

GEOREFERENCING POSITIONS UTM COORDINATES, ZONE 10, NAD 83 (CSRS), 4.0.0.BC.1				
STATION	NORTHING	EASTING	EHPA	CSF
Fd.IP'A'	5968214.21	514235.71	0.12	0.9994986
Fd.IP'B'	5968303.10	514542.94	0.11	0.9995035



THE FIELD SURVEY REPRESENTED BY THIS PLAN WAS COMPLETED
ON THE 26th DAY OF SEPTEMBER, 2018
SHAUNA C. GOERTZEN, BCLS 798

THIS PLAN LIES WITHIN THE REGIONAL DISTRICT OF FRASER-FORT GEORGE.

McElhanney
McELHANNEY ASSOCIATES
LAND SURVEYING LTD.
Suite 12
556 North Nechako Road
Prince George BC
Canada V2K 1A1
Tel 250 561 2229

File No. 2341-6646-01-RC