

**SUBDIVISION PLAN OF LOT 3, PLAN 9102,  
EXCEPT PLAN PGP47842, AND LOT 1, PLAN 9567,  
EXCEPT PLAN PGP39017, ALL IN DISTRICT LOT 2003,  
CARIBOO DISTRICT.**

PURSUANT TO SECTION 67 OF THE LAND TITLE ACT

INTEGRATED SURVEY AREA No. 39 PRINCE GEORGE, BC, NAD83 (CSRS) 4.0.0.BC.1

BCGS 93G.087



THE INTENDED PLOT SIZE OF THIS PLAN IS 560mm IN WIDTH BY 432mm IN HEIGHT (C SIZE) WHEN PLOTTED AT A SCALE OF 1:2000.

ALL DISTANCES ARE IN METRES AND DECIMALS THEREOF.

GRID BEARINGS ARE DERIVED FROM OBSERVATIONS BETWEEN GEODETTIC CONTROL MONUMENTS 86H1561 AND 86H1706.

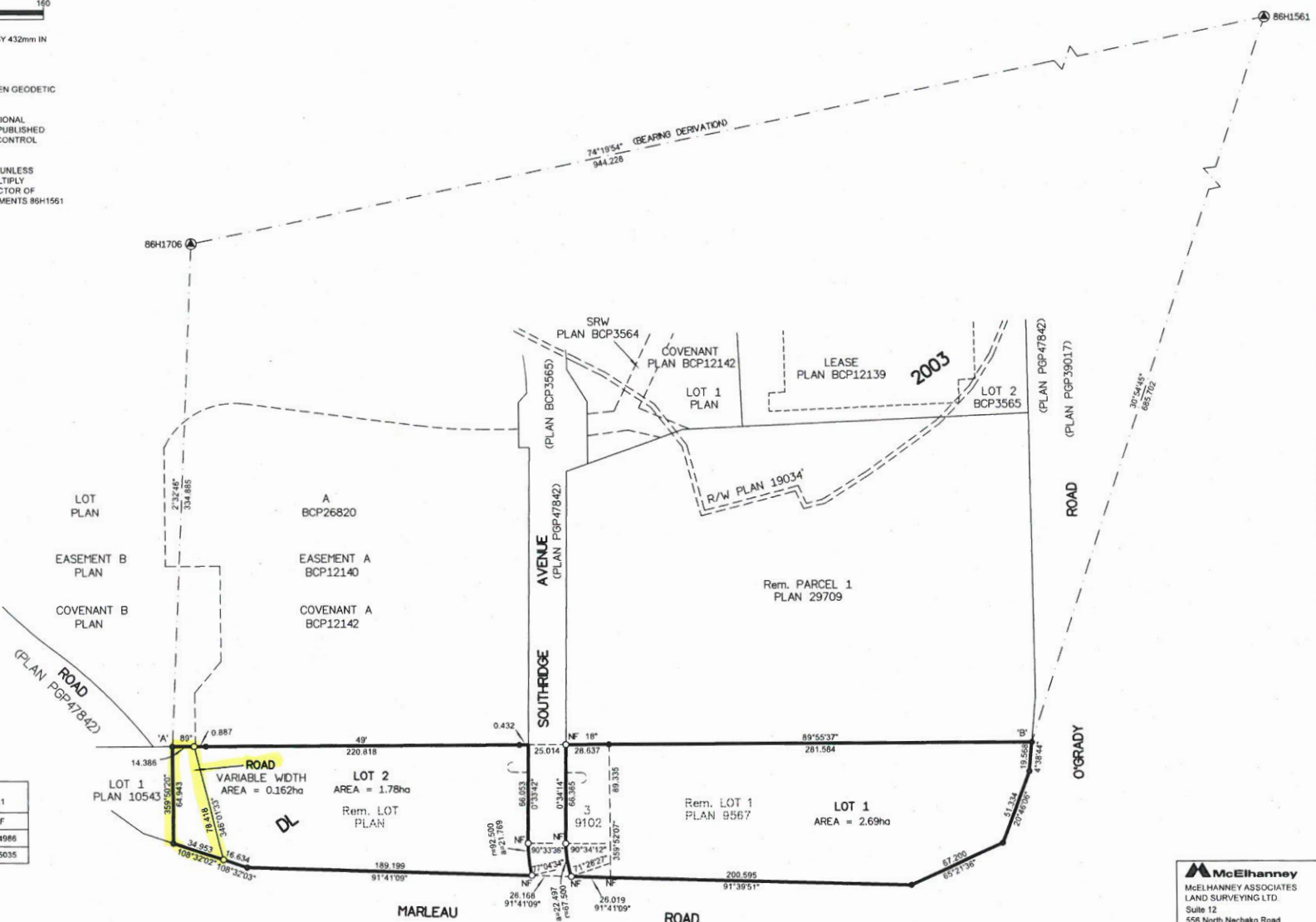
THE UTM COORDINATES AND ESTIMATED HORIZONTAL POSITIONAL ACCURACY ACHIEVED HAVE BEEN DERIVED FROM MASCOOT PUBLISHED COORDINATES AND STANDARD DEVIATIONS FOR GEODETTIC CONTROL MONUMENT 86H1706.

THIS PLAN SHOWS HORIZONTAL GROUND-LEVEL DISTANCES UNLESS OTHERWISE SPECIFIED. TO COMPUTE GRID DISTANCES, MULTIPLY GROUND-LEVEL DISTANCES BY THE AVERAGE COMBINED FACTOR OF 0.9995015 WHICH HAS BEEN DERIVED FROM CONTROL MONUMENTS 86H1561 AND 86H1706.

NOTE:  
SOME POSTS AND LINES ARE EXAGGERATED FOR CLARITY.

**LEGEND**

SYMBOLS	DESCRIPTION
FOUND	PLACED
⊙	CONTROL MONUMENT
●	STANDARD IRON POST
CSF	COMBINED SCALE FACTOR
EHPA	ESTIMATED HORIZONTAL POSITIONAL ACCURACY



GEOREFERENCING POSITIONS				
UTM COORDINATES, ZONE 10, NAD 83 (CSRS), 4.0.0.BC.1				
STATION	NORTHING	EASTING	EHPA	CSF
Fd IPA'	5968301.84	513971.47	0.12	0.9994986
Fd IPIB'	5968303.10	514542.94	0.11	0.9995035

THIS PLAN LIES WITHIN THE JURISDICTION OF THE APPROVING OFFICER FOR THE CITY OF PRINCE GEORGE.  
CPG FILE NO. SD100558

THE FIELD SURVEY REPRESENTED BY THIS PLAN WAS COMPLETED ON THE 10th DAY OF AUGUST, 2018  
SHAUNA C. GOERTZEN, BCLS 798

THIS PLAN LIES WITHIN THE REGIONAL DISTRICT OF FRASER-FORT GEORGE.

**McElhanney**  
McELHANNEY ASSOCIATES  
LAND SURVEYING LTD.  
Suite 12  
556 North Nechako Road  
Prince George BC  
Canada V2K 1A1  
Tel 250 561 2229  
File No. 2341-6646-S  
CPG File No. SD100558