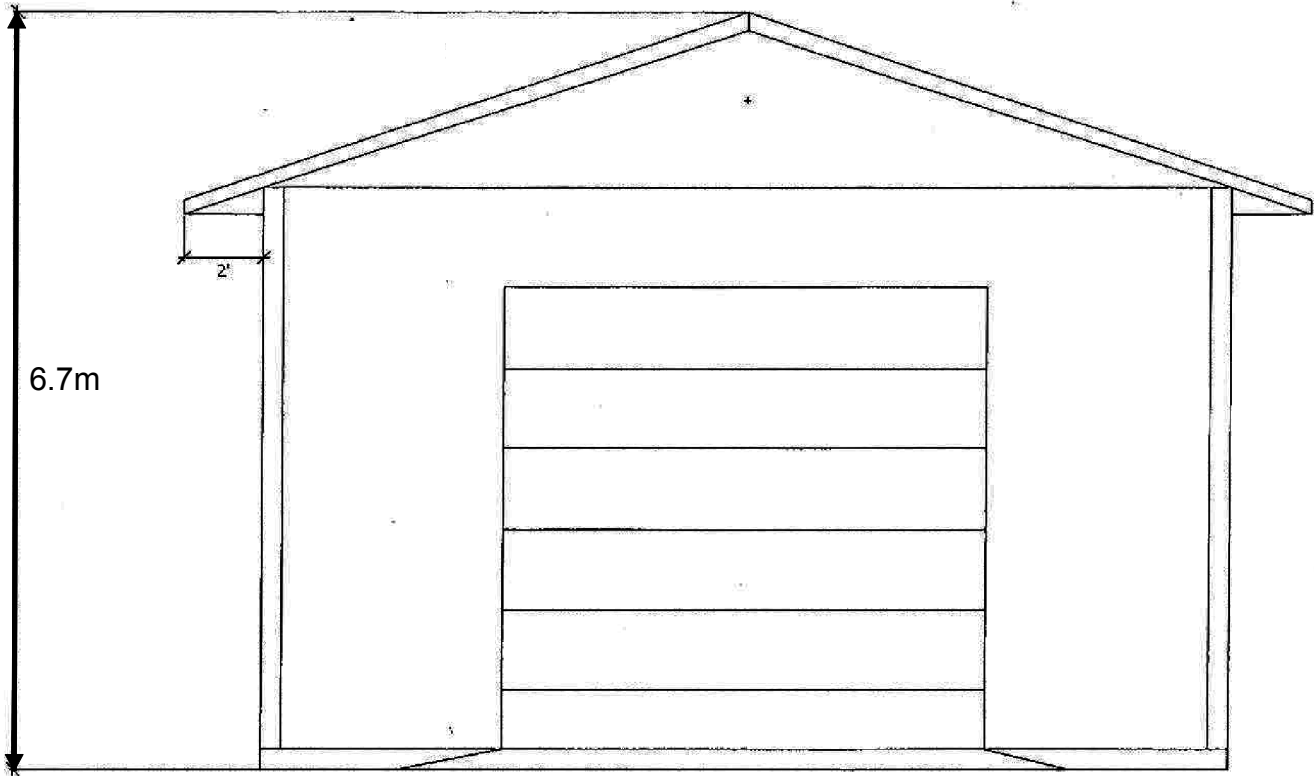
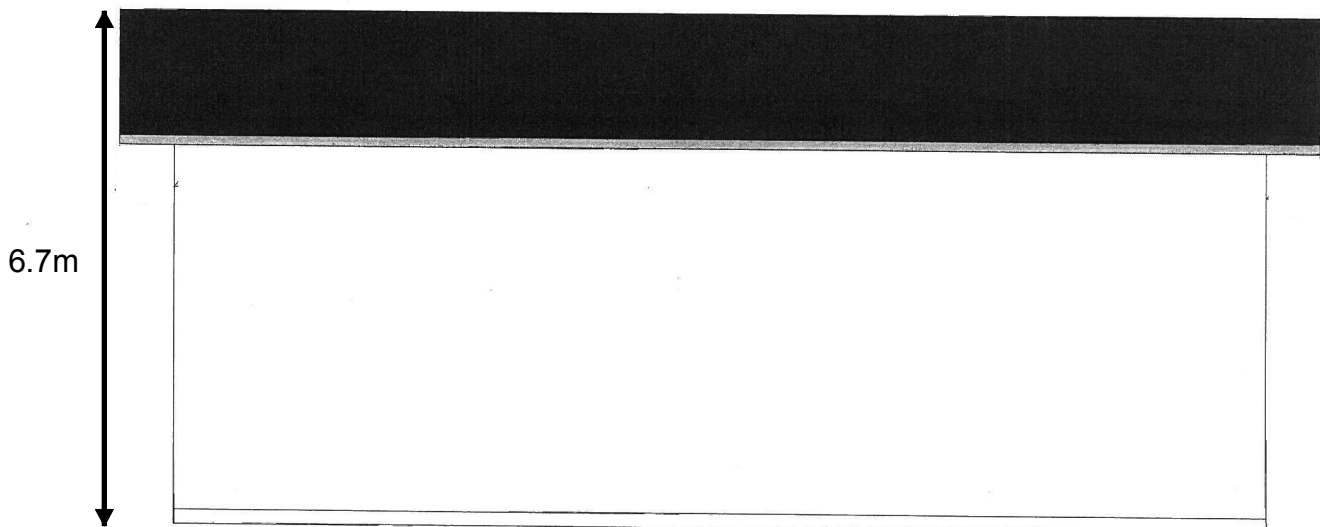


Vary City of Prince George Zoning Bylaw No. 7850, 2007 as follows:
Vary Section 9.5.6 2. by increasing the maximum height of a 96.6 m² accessory development from 6.0. m to 6.7 m



Front Elevation



Side Elevation

Exhibit "B" to VP100522

Parcel A (Being a consolidation of Lots 15 and 16,
See CA7019370), DL 1593, CD, Plan 15680