

CITY OF PRINCE GEORGE
BYLAW NO. 9034, 2019

A Bylaw of the City of Prince George to permanently close a portion of road located near HWY 97 South (Cariboo HWY North) and Sintich Road to remove its highway dedication for the purpose of future disposal of the lands.

WHEREAS the Council of the City of Prince George deems it desirable that an approximate 1.27 hectares of road dedicated on Plan EPP73945 be closed to traffic, and that the highway dedication thereof be removed;

AND WHEREAS, in accordance with section 40 of the *Community Charter*, notice of intention to adopt this bylaw has been delivered, posted and published, and an opportunity has been provided for persons who consider they are affected by this bylaw to make representations to Council;

NOW THEREFORE the Council of the City of Prince George, in open meeting assembled, **ENACTS AS FOLLOWS:**

1. That the portion of highway dedicated on Plan EPP73945, District Lot 750 Cariboo District, as shown outlined in bold black on Reference Plan EPP91198, attached hereto as Appendix "A" and forming part of this Bylaw, is closed to traffic.
2. That the dedication of the portion of highway dedicated by Plan EPP73945, District Lot 750, Cariboo District, as shown outlined in bold black on Reference Plan EPP91198, attached hereto as Appendix "A" and forming part of this Bylaw, is removed.
3. The Mayor and Corporate Officer are hereby empowered to do all things necessary to give effect to this Bylaw.
4. This Bylaw shall come into full force and take effect upon its adoption and shall be filed with the Registrar of the applicable Land Title Office.
5. This Bylaw may be cited for all purposes as "7919 Hwy 97 Road Closure Bylaw No. 9034, 2019".

READ A FIRST TIME THIS 27TH DAY OF MAY , 2019.

READ A SECOND TIME THIS 27TH DAY OF MAY , 2019.

First two readings passed by a UNANIMOUS decision of Member of City Council present and eligible to vote.

READ A THIRD TIME THIS DAY OF , 2019.

Third reading passed by a decision of Member of City Council present and eligible to vote.

Certified correct as passed third reading this day of , 2019.

CORPORATE OFFICER OF
THE CITY OF PRINCE GEORGE

APPROVED BY THE MINISTER OF TRANSPORTATION AND INFRASTRUCTURE PURSUANT TO THE PROVISIONS OF SECTION 41(3) OF THE *COMMUNITY CHARTER*.

THIS DAY OF , 2019.

for MINISTER OF TRANSPORTATION
AND INFRASTRUCTURE

ADOPTED THIS DAY OF , 2019, BY A
DECISION OF ALL MEMBERS OF CITY COUNCIL PRESENT AND
ELIGIBLE TO VOTE.

MAYOR

CORPORATE OFFICER

REFERENCE PLAN TO ACCOMPANY
 BY-LAW No. 9034 (PRINCE GEORGE)
 TO CLOSE ROAD SHOWN DEDICATED
 ON PLAN EPP73945, DISTRICT LOT 750,
 CARIBOO DISTRICT.

PLAN EPP91198

PURSUANT TO SECTION 120 OF THE LAND TITLE ACT
 AND SECTION 40 OF THE COMMUNITY CHARTER.

THIS PLAN LIES WITHIN INTEGRATED SURVEY AREA No. 39 PRINCE GEORGE, BC, NAD83 (CSRS) 4.0.0.BC.1

BCGS 93G.087



THE INTENDED PLOT SIZE OF THIS PLAN IS 432mm IN WIDTH BY 560mm IN HEIGHT (O SIZE) WHEN PLOTTED AT A SCALE OF 1:1000.

ALL DISTANCES ARE IN METRES AND DECIMALS THEREOF.

GRID BEARINGS ARE DERIVED FROM OBSERVATIONS BETWEEN GEODETIC CONTROL MONUMENTS 86H1761 AND 86H1724.

THE UTM COORDINATES AND ESTIMATED ABSOLUTE ACCURACY ACHIEVED HAVE BEEN DERIVED FROM MASCOT PUBLISHED COORDINATES AND STANDARD DEVIATIONS FOR GEODETIC CONTROL MONUMENT 86H1761.

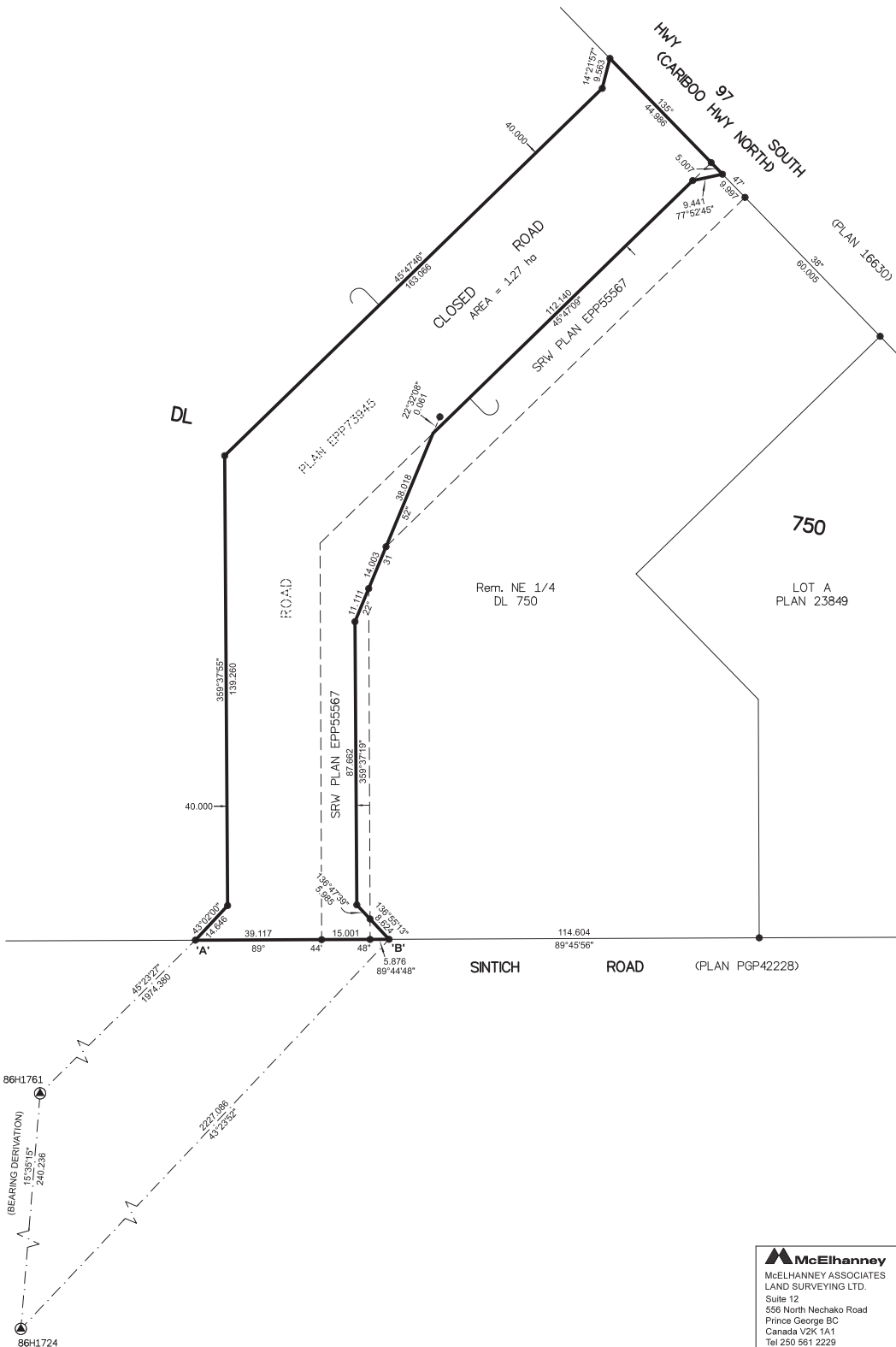
THIS PLAN SHOWS HORIZONTAL GROUND-LEVEL DISTANCES UNLESS OTHERWISE SPECIFIED. TO COMPUTE GRID DISTANCES, MULTIPLY GROUND-LEVEL DISTANCES BY THE AVERAGE COMBINED FACTOR OF 0.9995024 WHICH HAS BEEN DERIVED FROM GEODETIC CONTROL MONUMENT 86H1765.

NOTE:
 SOME POSTS AND LINES ARE EXAGGERATED FOR CLARITY.

LEGEND

SYMBOLS	DESCRIPTION
FOUND	PLACED
⊙	CONTROL MONUMENT
●	STANDARD IRON POST
CSF	COMBINED SCALE FACTOR
EAA	ESTIMATED ABSOLUTE ACCURACY

GEOREFERENCING POSITIONS			
UTM COORDINATES, ZONE 10, NAD 83 (CSRS), 4.0.0.BC.1			
STATION	NORTHING	EASTING	CSF
Fd. IP 'A'	5966786.70	519041.98	0.9995024
Fd. IP 'B'	5966786.96	519101.95	0.9995024



THE FIELD SURVEY REPRESENTED BY THIS PLAN WAS COMPLETED
 ON THE 7th DAY OF MARCH, 2019
 SHAUNA C. GOERTZEN, BCLS 798

THIS PLAN LIES WITHIN THE REGIONAL DISTRICT OF FRASER-FORT GEORGE.

McElhanney
 McELHANNEY ASSOCIATES
 LAND SURVEYING LTD.
 Suite 12
 556 North Nechako Road
 Prince George BC
 Canada V2K 1A1
 Tel 250 561 2229

File No. 2341-6691-RC