

REFERENCE PLAN TO ACCOMPANY  
 BY-LAW No. 9034 (PRINCE GEORGE)  
 TO CLOSE ROAD SHOWN DEDICATED  
 ON PLAN EPP73945, DISTRICT LOT 750,  
 CARIBOO DISTRICT.

PLAN EPP91198

PURSUANT TO SECTION 120 OF THE LAND TITLE ACT  
 AND SECTION 40 OF THE COMMUNITY CHARTER.

THIS PLAN LIES WITHIN INTEGRATED SURVEY AREA No. 39 PRINCE GEORGE, BC, NAD83 (CSRS) 4.0.0.BC.1

BCGS 93G.087



THE INTENDED PLOT SIZE OF THIS PLAN IS 432mm IN WIDTH BY 560mm IN HEIGHT (O SIZE) WHEN PLOTTED AT A SCALE OF 1:1000.

ALL DISTANCES ARE IN METRES AND DECIMALS THEREOF.

GRID BEARINGS ARE DERIVED FROM OBSERVATIONS BETWEEN GEODETIC CONTROL MONUMENTS 86H1761 AND 86H1724.

THE UTM COORDINATES AND ESTIMATED ABSOLUTE ACCURACY ACHIEVED HAVE BEEN DERIVED FROM MASCOT PUBLISHED COORDINATES AND STANDARD DEVIATIONS FOR GEODETIC CONTROL MONUMENT 86H1761.

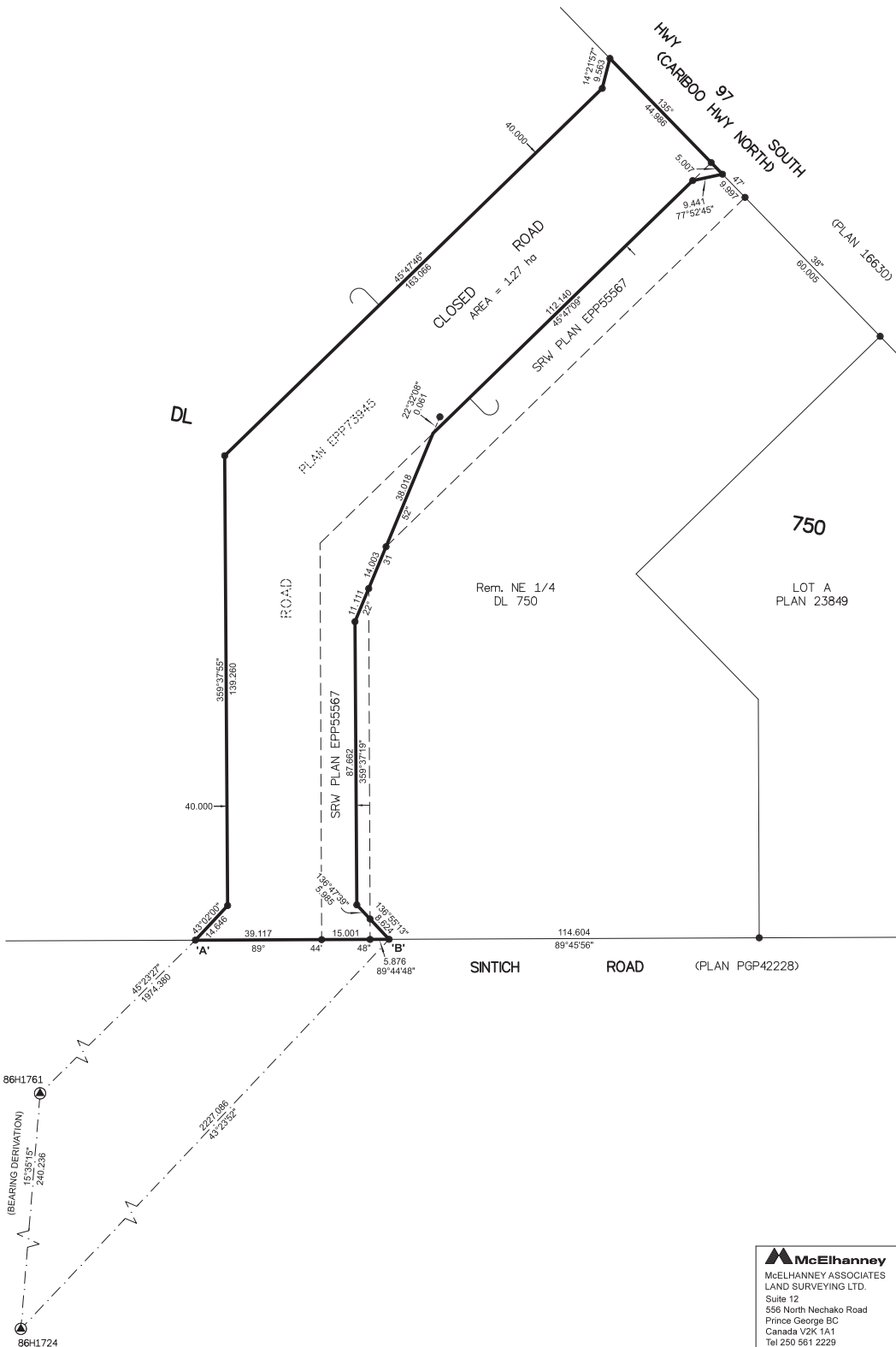
THIS PLAN SHOWS HORIZONTAL GROUND-LEVEL DISTANCES UNLESS OTHERWISE SPECIFIED. TO COMPUTE GRID DISTANCES, MULTIPLY GROUND-LEVEL DISTANCES BY THE AVERAGE COMBINED FACTOR OF 0.9995024 WHICH HAS BEEN DERIVED FROM GEODETIC CONTROL MONUMENT 86H1765.

NOTE:  
 SOME POSTS AND LINES ARE EXAGGERATED FOR CLARITY.

**LEGEND**

SYMBOLS	DESCRIPTION
FOUND	PLACED
⊙	CONTROL MONUMENT
●	STANDARD IRON POST
CSF	COMBINED SCALE FACTOR
EAA	ESTIMATED ABSOLUTE ACCURACY

GEOREFERENCING POSITIONS			
UTM COORDINATES, ZONE 10, NAD 83 (CSRS), 4.0.0.BC.1			
STATION	NORTHING	EASTING	CSF
Fd. IP 'A'	5966786.70	519041.98	0.9995024
Fd. IP 'B'	5966786.96	519101.95	0.9995024



THE FIELD SURVEY REPRESENTED BY THIS PLAN WAS COMPLETED  
 ON THE 7th DAY OF MARCH, 2019  
 SHAUNA C. GOERTZEN, BCLS 798

THIS PLAN LIES WITHIN THE REGIONAL DISTRICT OF FRASER-FORT GEORGE.

**McElhanney**  
 McELHANNEY ASSOCIATES  
 LAND SURVEYING LTD.  
 Suite 12  
 556 North Nechako Road  
 Prince George BC  
 Canada V2K 1A1  
 Tel 250 561 2229

File No. 2341-6691-RC