

SUBDIVISION PLAN OF THE NORTH EAST 1/4, EXCEPT PLANS 15470, 16630, 18608, 18991, 20076, 23849, PGP36675, PGP42228 AND EPP73945, LOT A, PLAN 23849, AND CLOSED ROAD, PLAN EPP91198, ALL IN DISTRICT LOT 750, CARIBOO DISTRICT.

PLAN EPP91199

PURSUANT TO SECTION 67 OF THE LAND TITLE ACT  
 THIS PLAN LIES WITHIN INTEGRATED SURVEY AREA No. 39 PRINCE GEORGE, BC, NAD83 (CSRS) 4.0 0 BC.1  
 BCGS 930.087



THE INTENDED PLOT SIZE OF THIS PLAN IS 864mm IN WIDTH BY 560mm IN HEIGHT (D SIZE WHEN PLOTTED AT A SCALE OF 1:1250)  
 ALL DISTANCES ARE IN METRES AND DECIMALS THEREOF  
 GRID BEARINGS ARE DERIVED FROM OBSERVATIONS BETWEEN GEODETIC CONTROL MONUMENTS 88H1761 AND 88H1724  
 THE UTM COORDINATES AND ESTIMATED ABSOLUTE ACCURACY ACHIEVED HAVE BEEN DERIVED FROM MASCOY PUBLISHED COORDINATES AND STANDARD DEVIATIONS FOR GEODETIC CONTROL MONUMENT 88H1761  
 THIS PLAN SHOWS HORIZONTAL GROUND-LEVEL DISTANCES UNLESS OTHERWISE SPECIFIED. TO COMPUTE GRID DISTANCES, MULTIPLY GROUND-LEVEL DISTANCES BY THE AVERAGE COMBINED FACTOR OF 0.999924 WHICH HAS BEEN DERIVED FROM GEODETIC CONTROL MONUMENT 88H1756  
 NOTE:  
 THIS PLAN SHOWS ONE OR MORE WITNESS POSTS WHICH ARE NOT SET ON THE TRUE CORNERS(S).  
 SOME POSTS ARE EXAGGERATED FOR CLARITY.

**LEGEND**

SYMBOLS	DESCRIPTION
FOUND PLACED	
○	CONTROL MONUMENT
●	STANDARD IRON POST
○	COMBINED SCALE FACTOR
EA	ESTIMATED ABSOLUTE ACCURACY

GEOREFERENCING POSITIONS  
 UTM COORDINATES, ZONE 18, NAD 83 (CSRS), 4.0 0 BC.1

STATION	NORTHING	EASTING	EAA	CSF
Fd. IP 'A'	5966786.70	519041.88	0.15	0.99992024
Fd. IP 'B'	5966786.96	519101.95	0.15	0.99992024

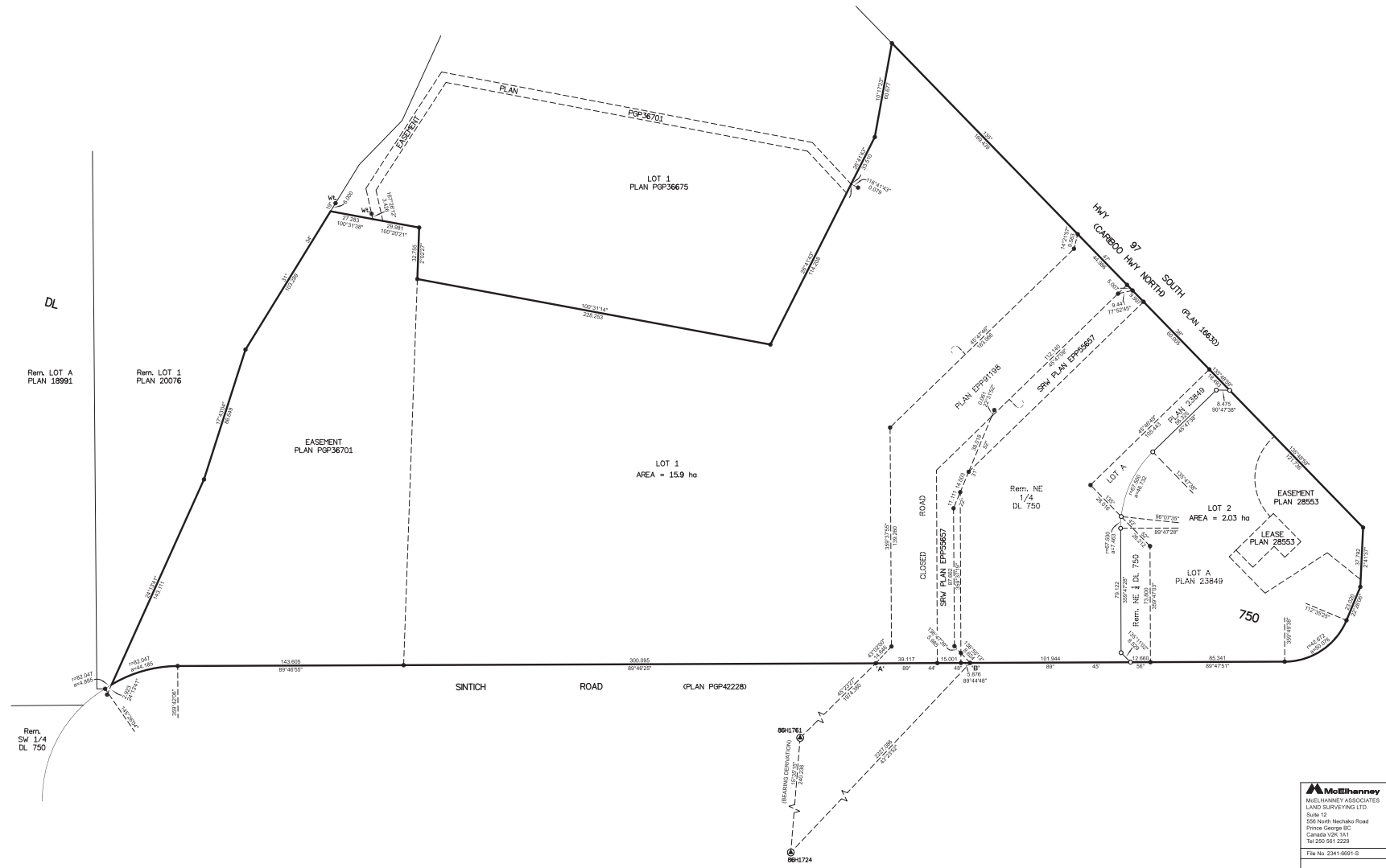


Exhibit "A"

THIS PLAN LIES WITHIN THE JURISDICTION OF THE APPROVING OFFICER FOR THE CITY OF PRINCE GEORGE.  
 THE FIELD SURVEY REPRESENTED BY THIS PLAN WAS COMPLETED ON THE 7th DAY OF MARCH, 2019  
 SURVAILOR: C. OERTZEN, BOLS 798  
 THIS PLAN LIES WITHIN THE REGIONAL DISTRICT OF FRASER-FORT GEORGE.

**McEhannay**  
 McEhannay Associates  
 LAND SURVEYING LTD.  
 Suite 112  
 528 North Nechako Road  
 Prince George BC  
 Canada V2N 1A1  
 Tel 250 561 2229  
 Fax No 2341 8891-S