

CONSTRUCTION UPDATE

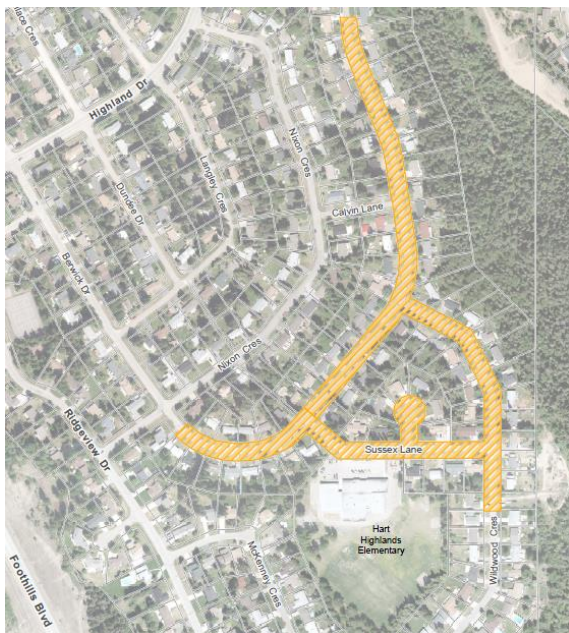
Killarney-Sussex-Wildwood Road & Utility Upgrades

NOVEMBER 10, 2016

City utility crews have now completed work on Killarney Drive between Sussex Lane and Wildwood Crescent. This concludes the sewer and water work that will be done in 2016. The remaining construction on Killarney Drive will begin when weather allows in the spring of 2017.

Due to the unseasonably warm weather, it may be possible to pave the section of Killarney between the intersections with Sussex and Wildwood before the winter. Otherwise, this section will be maintained as a gravel road over the winter as previously communicated.

A thin, temporary layer of asphalt will be laid on Killarney at the intersections with Sussex and Wildwood, as these intersections will be disturbed by the work planned for 2017. Doing this is a cost effective way to minimize the need for maintenance over the winter. Once utility construction on Killarney is complete, both of these intersections will be paved along with the remaining parts of Killarney.



2016 Construction



Project Extents

Outstanding restoration work, including concrete work, driveways, and landscaping, will take place in 2017. If you have a sprinkler system that was impacted by construction, please winterize it as normal.

FOR MORE INFORMATION

Project Website: princegeorge.ca/ksw
 Contact: Hayley Sedola (Project Manager)
 250-614-7885
hayley.sedola@princegeorge.ca
 After Hours: 250-561-7600