



**Engineering & Public Works**

**ENGINEERING SERVICES**

1100 Patricia Blvd. | Prince George, BC, Canada V2L 3V9

p: 250.561.7600 | [www.princegeorge.ca](http://www.princegeorge.ca)

August 16, 2017

**Re: Hart Highlands Sanitary Sewer Local Area Service Project (LAS) - Phase 4**

Dear Property Owner:

The formal petition to extend sanitary sewer services to 106 properties in the Hart Highlands area ended on July 31, 2017. The number of petitions received was not sufficient to form a local area service project.

37 of 106 (35%) properties returned signed petitions in support of the LAS project. These properties represented 34% of the total assessed value of land. A successful petition must be signed by the owners of at least 50% of the parcels. These parcels must represent greater than 50% of the total assessed value of land and improvements that would be subject to the local service tax.

15 of 24 (63%) properties on Dunbar Place, Croft Road and Glenngarry Road returned petitions in support of extending sanitary sewer services and your property is within this area. Property owners in this area expressed interest in proceeding with a smaller project area if the initial petition was unsuccessful.

The results of the petition and the Corporate Officer Certificate of Insufficiency will be included in a staff report to City Council on August 21, 2017. Pending City Council approval, the City will facilitate another smaller formal petition to extend sanitary services to 24 properties on Dunbar Place, Croft Road and Glenngarry Road as shown on map on back of page. Other areas will no longer be included. The report to Council and Certificate of Insufficiency are available in the City Council agenda on [princegeorge.ca](http://princegeorge.ca).

The estimated cost, interest rate, and repayment period will remain the same, with a highest probable cost of \$27,000 per lot.

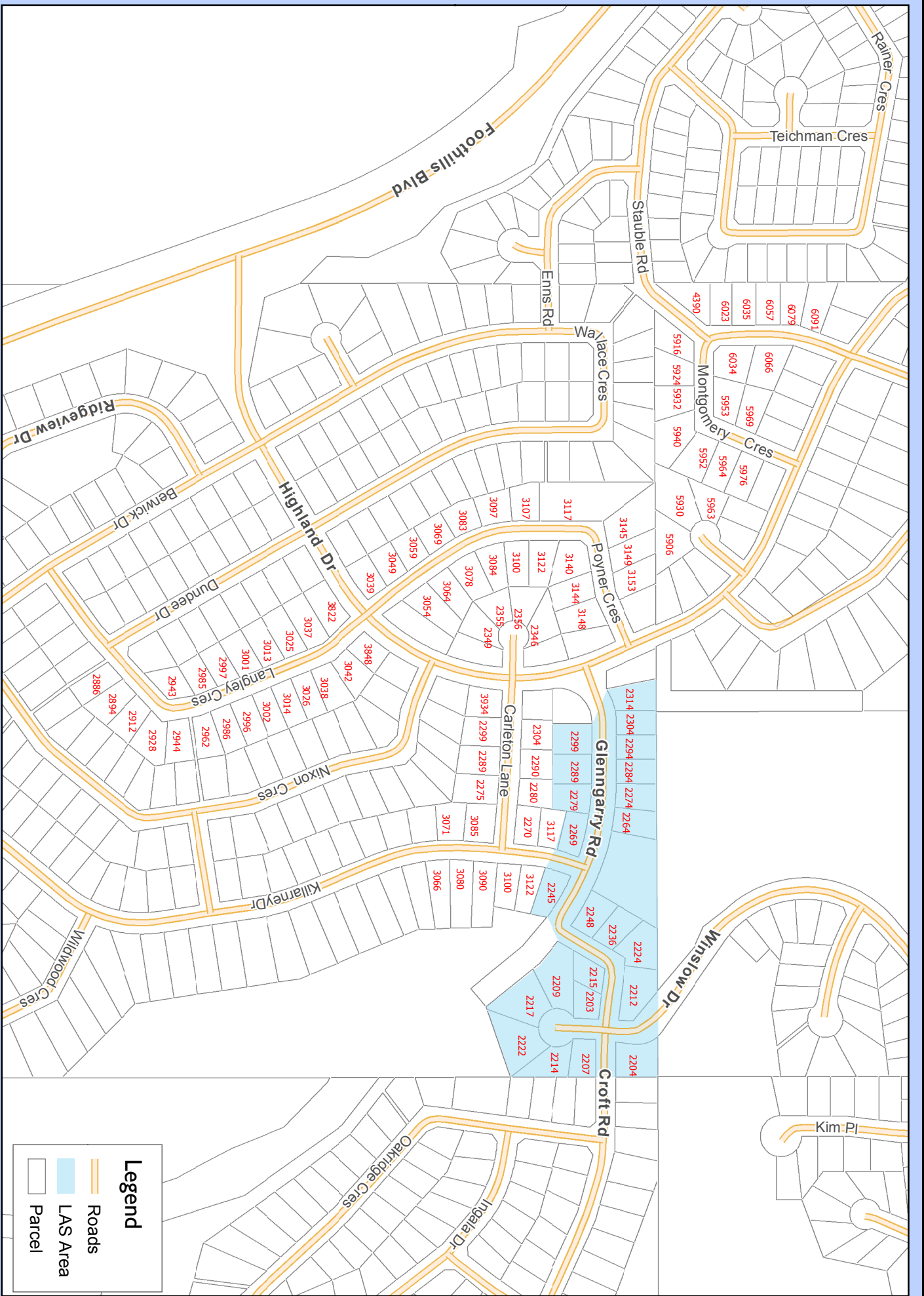
All documents distributed to property owners, presentation materials, meeting minutes, maps and frequently asked questions are available on the LAS webpage [www.princegeorge.ca/LAS](http://www.princegeorge.ca/LAS).

If you have any questions, please feel free to call.


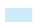

Sincerely,  
CITY of PRINCE GEORGE

A handwritten signature in blue ink, appearing to read "Ian Sinclair".

Ian Sinclair  
Engineering Assistant, Engineering Services  
Engineering and Public Works  
p: 250-561-7600  
e: [ian.sinclair@princegeorge.ca](mailto:ian.sinclair@princegeorge.ca)



**Legend**

-  Roads
-  LAS Area
-  Parcel

0 50 100 150 200 Meters

Coordinate System: NAD 1983 UTM Zone 10N  
 Projection: Transverse Mercator  
 Datum: North American 1983

**1:5000**

# Hart Highlands Sanitary Sewer LAS

Revised Phase 4 Area



**CITY OF PRINCE GEORGE**