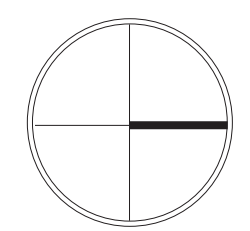




P.G.G.C.C. NEIGHBOURHOOD PLAN

September 20, 2010



Existing Plan Area And Ownership Plan
Figure 1





LEGEND

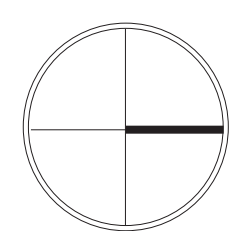
	As Shown	Low Range	High Range
Public/Recreation			
Pine Valley Golf Course	38.3 Ac. (15.5 Ha.)	38.3 Ac. (15.5 Ha.)	38.3 Ac. (15.5 Ha.)
Clubhouse	8.8 Ac. (3.6 Ha.)	7.5 Ac. (3 Ha.)	11.5 Ac. (4.7 Ha.)
Park Space	18.8 Ac. (11.1 Ha.)	15.0 Ac. (6 Ha.)	20.1 Ac. (8.1 Ha.)
Subtotal	65.9 Ac. (26.6 Ha.)	60.8 Ac. (24.5 Ha.)	69.9 Ac. (28.3 Ha.)
Commercial			
Regional Commercial	29.6 Ac. (11.9 Ha.)	29.8 Ac. (12.0 Ha.)	32.0 Ac. (12.9 Ha.)
Arterial Commercial	18.0 Ac. (7.3 Ha.)	18.0 Ac. (7.3 Ha.)	37.0 Ac. (14.9 Ha.)
Pine Centre Mall Commercial (Existing)	39.8 Ac. (16.1 Ha.)	39.8 Ac. (16.1 Ha.)	39.8 Ac. (16.0 Ha.)
Pine Centre Mall Expansion Commercial	8.3 Ac. (3.4 Ha.)	5.0 Ac. (2.0 Ha.)	10.0 Ac. (4.0 Ha.)
Neighbourhood Commercial/Mixed Use	12.8 Ac. (5.2 Ha.)	0.0 Ac. (0.0 Ha.)	12.8 Ac. (5.2 Ha.)
Subtotal	108.5Ac. (43.9.8Ha.)	92.6Ac. (37.5 Ha.)	131.6 Ac. (53.3 Ha.)
Residential			
Townhouse	16.8 Ac. (6.8 Ha.)	13.5 Ac. (5.5 Ha.)	23.6 Ac. (9.5 Ha.)
Multiple Family	19.1 Ac. (7.7 Ha.)	12.7 Ac. (5.1 Ha.)	25.4 Ac. (10.3 Ha.)
Seniors Housing	6.0 Ac. (2.4 Ha.)	5.0 Ac. (2.0 Ha.)	25.2 Ac. (10.2 Ha.)
Subtotal	41.8Ac. (16.9 Ha.)	31.2 Ac. (12.6 Ha.)	74.2 Ac. (30 Ha.)
Roads/ROW	16.8 Ac. (6.8 Ha.)	15.4 Ac. (6.2 Ha.)	16.7 Ac. (6.7 Ha.)
Overall Site Area	233.1Ac. (94.3 Ha.)		





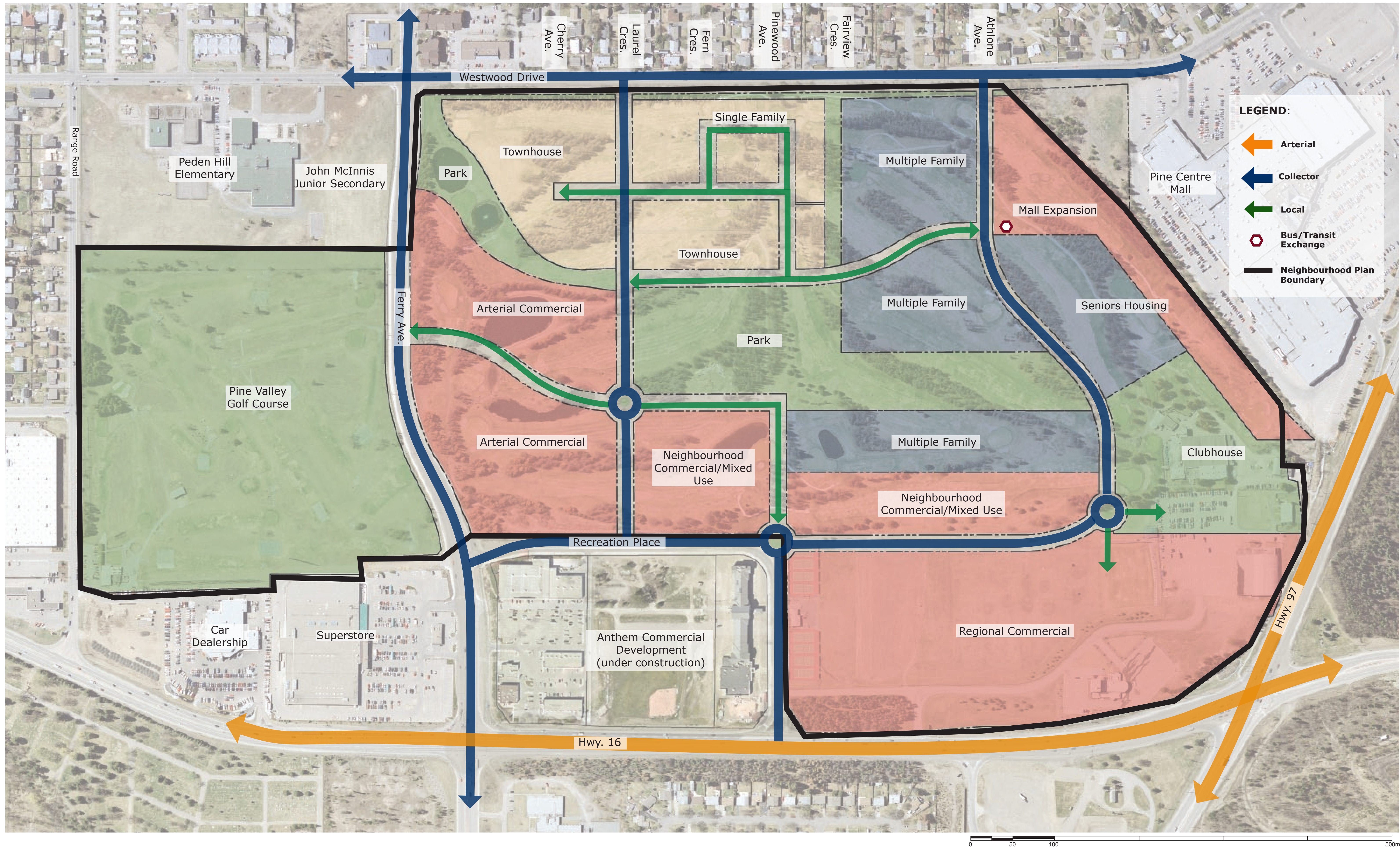
P.G.G.C.C. NEIGHBOURHOOD PLAN

September 20, 2010



Park and Pedestrian Network
Figure 3





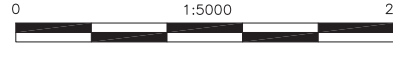
H:\PROJ\2341\2011 PGGCC Neighbourhood Plan\Servicing Assessment\2011-20100429-Existing Utilities.dwg
 April 29, 2010 11:35:05



No.	Date	Revision	Dr.	CK'd

THIS DRAWING AND DESIGN IS THE PROPERTY OF McELHANNEY CONSULTING SERVICES LTD. AND SHALL NOT BE USED, REUSED OR REPRODUCED WITHOUT THE CONSENT OF THE SAID COMPANY. McELHANNEY CONSULTING SERVICES LTD. WILL NOT BE HELD RESPONSIBLE FOR THE IMPROPER OR UNAUTHORIZED USE OF THIS DRAWING AND DESIGN.
 INFORMATION ON EXISTING FEATURES MAY NOT BE COMPLETE OR ACCURATE. PRIOR TO CONSTRUCTION CONTRACTOR SHALL CONFIRM LOCATIONS OF ALL EXISTING FEATURES AND ADVISE THE ENGINEER OF POTENTIAL CONFLICTS.


McElhanney
 McElhanney Consulting Services Ltd.
 1633 First Avenue PH (250) 561-2229
 Prince George B.C. V2L 2Y8 FAX (250) 563-1941
 www.mcelhanney.com Toll Free (866) 451-2229

Designed: _____ Checked: JDS QC:
 Drawn: TLL Date: 10-04-29


Approved/Sealed

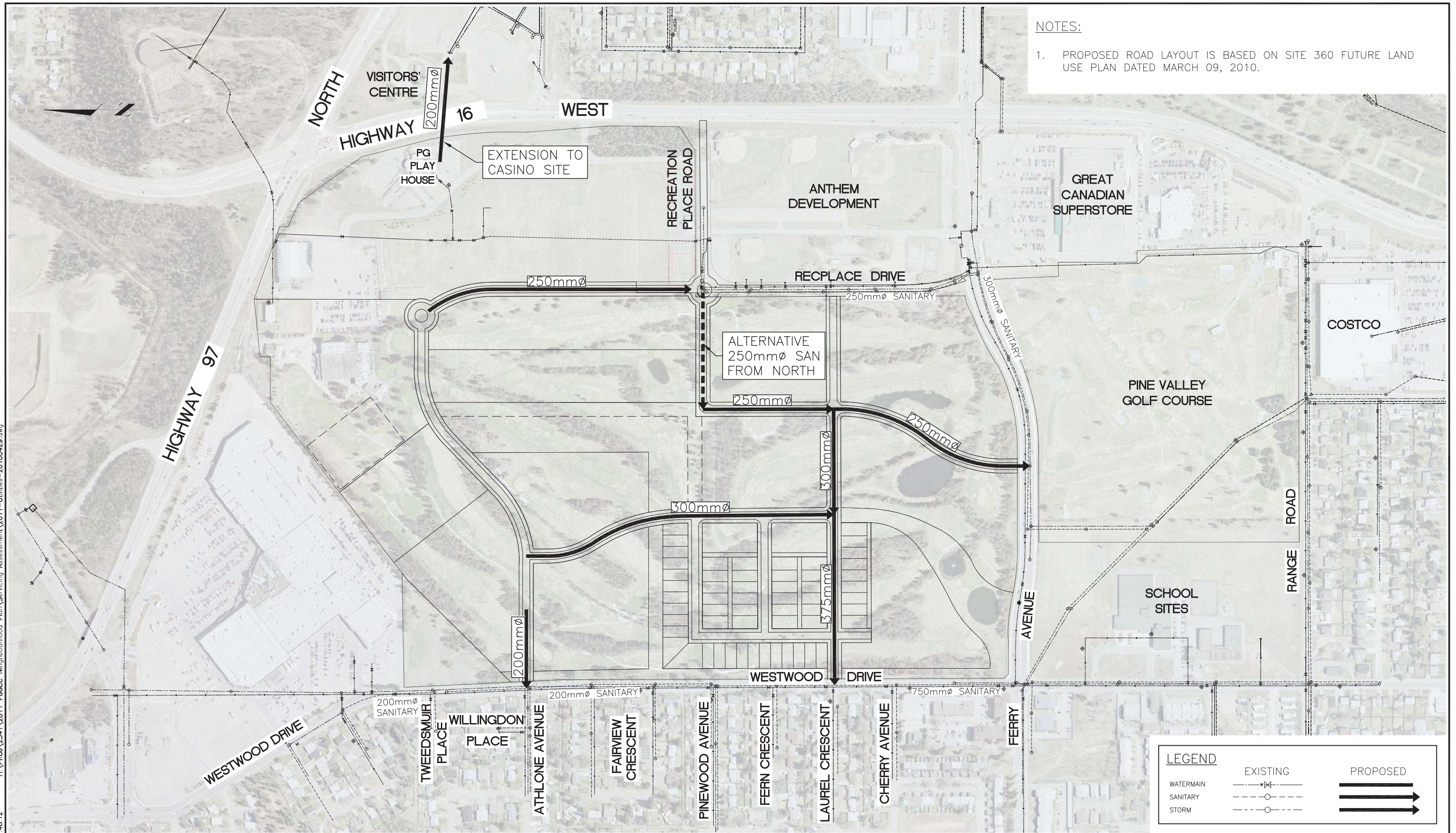
City of Prince George
PGGCC Servicing
 EXISTING UTILITIES

Client Project No	
Client Drawing No	
MCSL Project No. 2341-02011-0	
Drawing No.	
Sheet 1 of 3	Revision 0

Figure 5

Destroy all prints bearing previous number

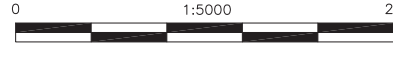
H:\PROJ\2341\2011 PGGCC Neighbourhood Plan\Servicing Assessment\2011-Utilities-20100429.dwg
 April 29, 2010 11:48:12



No.	Date	Revision	Dr.	Chk'd

THIS DRAWING AND DESIGN IS THE PROPERTY OF McELHANNEY CONSULTING SERVICES LTD. AND SHALL NOT BE USED, REUSED OR REPRODUCED WITHOUT THE CONSENT OF THE SAID COMPANY. McELHANNEY CONSULTING SERVICES LTD. WILL NOT BE HELD RESPONSIBLE FOR THE IMPROPER OR UNAUTHORIZED USE OF THIS DRAWING AND DESIGN. INFORMATION ON EXISTING FEATURES MAY NOT BE COMPLETE OR ACCURATE. PRIOR TO CONSTRUCTION CONTRACTOR SHALL CONFIRM LOCATIONS OF ALL EXISTING FEATURES AND ADVISE THE ENGINEER OF POTENTIAL CONFLICTS.


McElhanney
 McElhanney Consulting Services Ltd.
 1633 First Avenue PH (250) 561-2229
 Prince George B.C. V2L 2Y8 FAX (250) 563-1941
 www.mcelhanney.com Toll Free (866) 451-2229

Designed: _____ Checked: _____ QC: _____
 Drawn: TLL Date: 10-04-29


Approved/Sealed

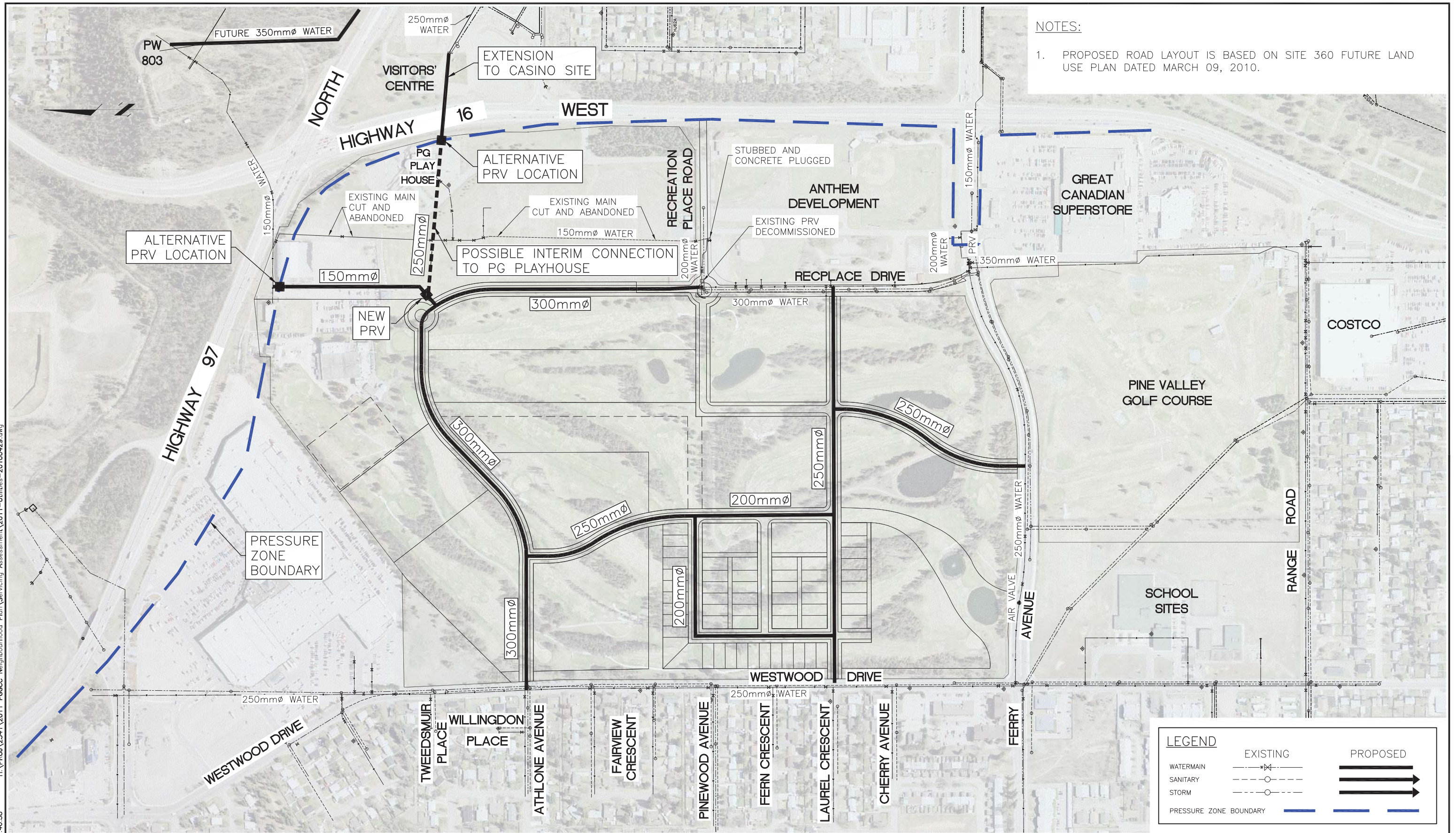
City of Prince George
PGGCC Servicing
SANITARY SEWER SERVICING

Client Project No.	
Client Drawing No.	
MCSL Project No.	2341-2011-0
Drawing No.	
Sheet 2 of 4	Revision

Figure 6

Destroy all prints bearing previous number

H:\PROJ\2341\2011 PGGCC Neighbourhood Plan\Servicing Assessment\2011-Utilities-20100429.dwg
 April 29, 2010 11:40:58



THIS DRAWING AND DESIGN IS THE PROPERTY OF McELHANNEY CONSULTING SERVICES LTD. AND SHALL NOT BE USED, REUSED OR REPRODUCED WITHOUT THE CONSENT OF THE SAID COMPANY. McELHANNEY CONSULTING SERVICES LTD. WILL NOT BE HELD RESPONSIBLE FOR THE IMPROPER OR UNAUTHORIZED USE OF THIS DRAWING AND DESIGN. INFORMATION ON EXISTING FEATURES MAY NOT BE COMPLETE OR ACCURATE. PRIOR TO CONSTRUCTION CONTRACTOR SHALL CONFIRM LOCATIONS OF ALL EXISTING FEATURES AND ADVISE THE ENGINEER OF POTENTIAL CONFLICTS.

McElhanney
 McElhanney Consulting Services Ltd.
 1633 First Avenue PH (250) 561-2229
 Prince George B.C. V2L 2Y8 FAX (250) 563-1941
 www.mcelhanney.com Toll Free (866) 451-2229

Designed: _____ Checked: _____ QC: _____
 Drawn: TLL Date: 10-04-29

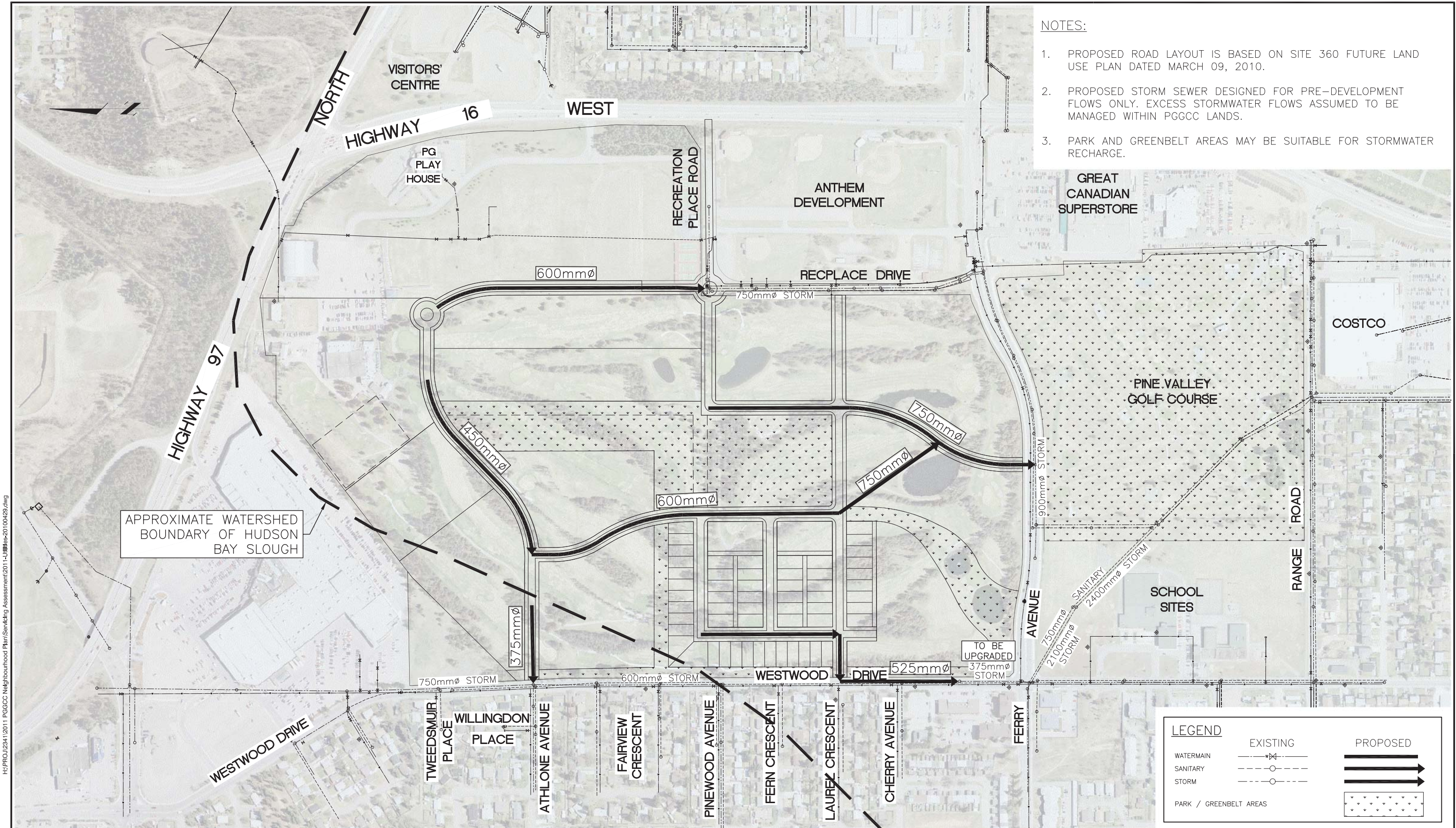
0 1:5000 250

City of Prince George
 PGGCC Servicing
 WATER SERVICING

Client Project No.	
Client Drawing No.	
MCSL Project No.	2341-2011-0
Drawing No.	
Sheet	3 of 4
Revision	

Figure 7

Destroy all prints bearing previous number



H:\PROJ\2341\2011 PGGCC Neighbourhood Plan\Servicing Assessment\2011-Utilities-20100429.dwg

No.	Date	Revision	Dr.	Ck'd

THIS DRAWING AND DESIGN IS THE PROPERTY OF McELHANNEY CONSULTING SERVICES LTD. AND SHALL NOT BE USED, REUSED OR REPRODUCED WITHOUT THE CONSENT OF THE SAID COMPANY. McELHANNEY CONSULTING SERVICES LTD. WILL NOT BE HELD RESPONSIBLE FOR THE IMPROPER OR UNAUTHORIZED USE OF THIS DRAWING AND DESIGN. INFORMATION ON EXISTING FEATURES MAY NOT BE COMPLETE OR ACCURATE. PRIOR TO CONSTRUCTION CONTRACTOR SHALL CONFIRM LOCATIONS OF ALL EXISTING FEATURES AND ADVISE THE ENGINEER OF POTENTIAL CONFLICTS.

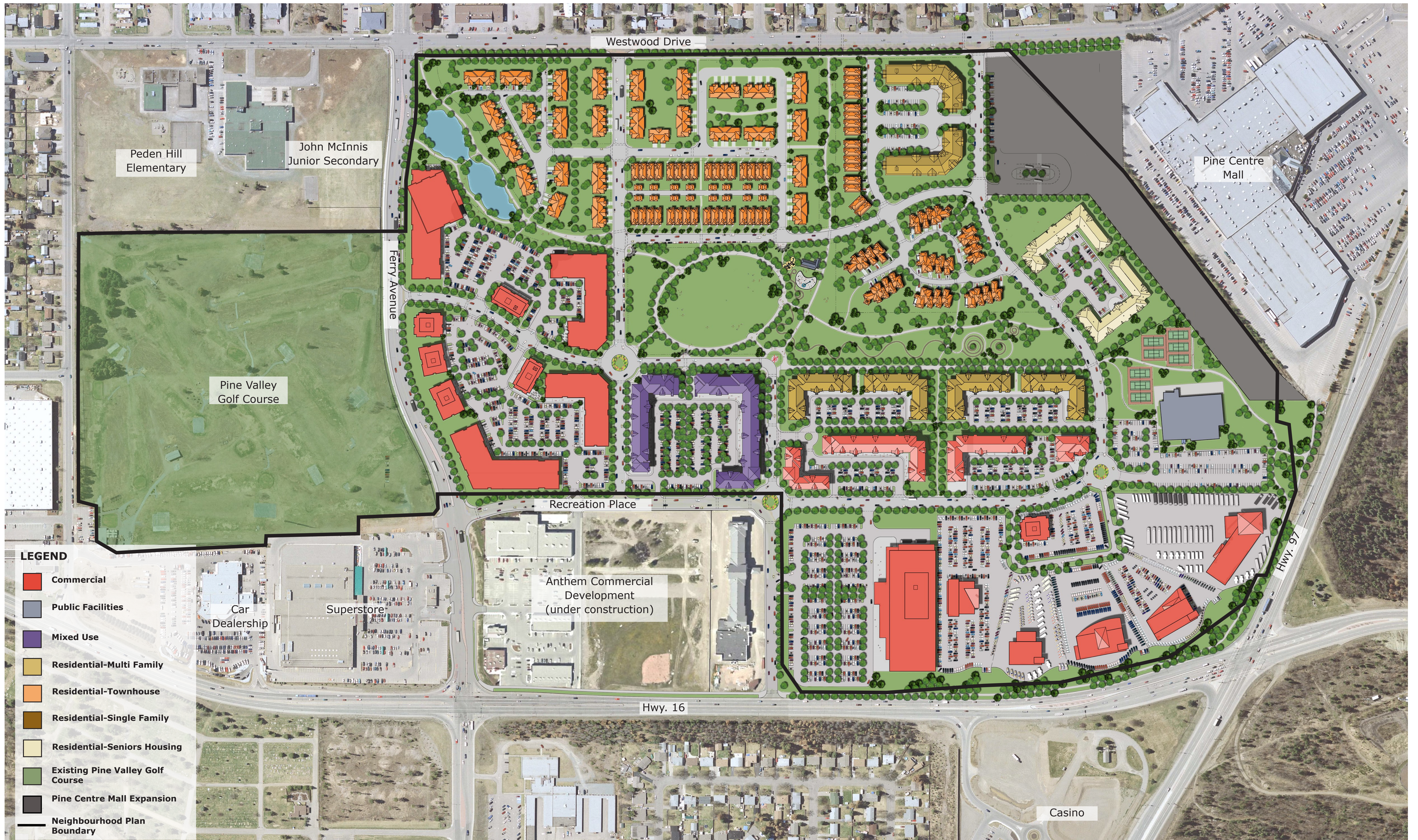
McElhanney
 McElhanney Consulting Services Ltd.
 1633 First Avenue PH (250) 561-2229
 Prince George B.C. V2L 2Y8 FAX (250) 563-1941
 www.mcelhanney.com Toll Free (866) 451-2229

Designed: _____ Checked: _____ QC: _____
 Drawn: TLL Date: 10-04-29
 0 1:5000 250
 Approved Sealed

City of Prince George
 PGGCC Servicing
 STORM SEWER SERVICING

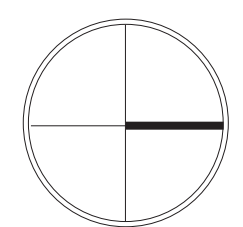
Client Project No. _____
 Client Drawing No. _____
 MCSL Project No. 2341-2011-0
 Drawing No. _____
 Sheet 4 of 4 Revision _____
 Destroy all prints bearing previous number ▲

Figure 8



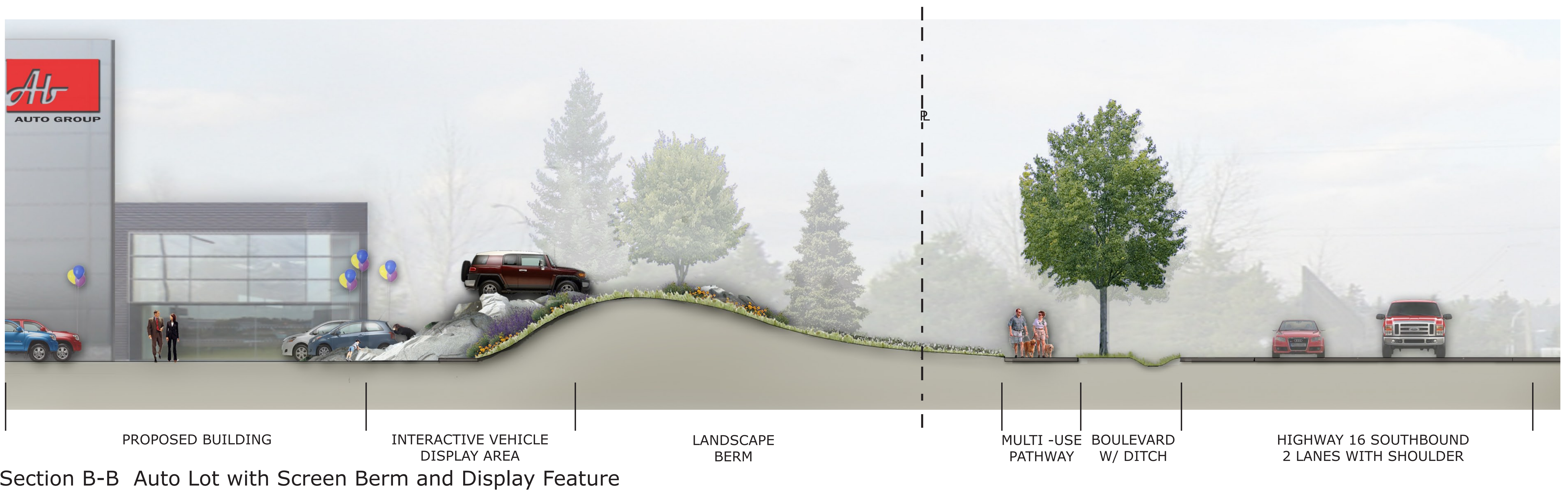
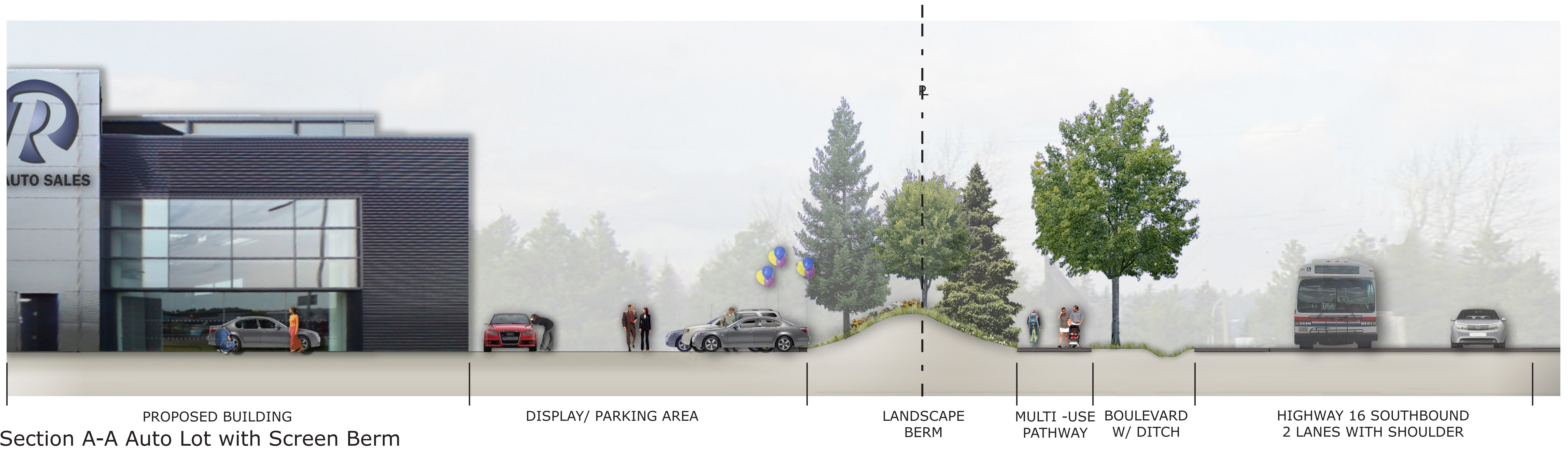
P.G.G.C.C. NEIGHBOURHOOD PLAN

September 20, 2010



Demonstration Plan
Figure 9










HWY 97

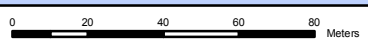
HWY 16

HWY 97 S

RECREATION PL

1.64 ha

-  City Owned Property
-  No Development Area
-  Parcel



Coordinate System: NAD 1983 UTM Zone 10N
Projection: Transverse Mercator
Datum: North American 1983

1:2000

Map 1

