



2025-2026 RESIDENTIAL GARBAGE COLLECTION SCHEDULE

Prince George is divided into garbage collection zones. Refer to the map on the reverse to find your zone; the calendar indicates the dates that garbage collection occurs in those zones.

On Statutory Holidays, there will be no garbage collection

| March 2025 | | | | | | | April 2025 | | | | | | | May 2025 | | | | | | | June 2025 | | | | | | | |
|------------|----|----|----|----|----|----|------------|----|----|----|----|----|----|----------|----|----|----|----|----|----|-----------|----|----|----|----|----|----|--|
| Su | Mo | Tu | We | Th | Fr | Sa | Su | Mo | Tu | We | Th | Fr | Sa | Su | Mo | Tu | We | Th | Fr | Sa | Su | Mo | Tu | We | Th | Fr | Sa | |
| | | | | | | 1 | | | 1 | 2 | 3 | 4 | 5 | | | | | 1 | 2 | 3 | 1 | 2 | 3 | 4 | 5 | 6 | 7 | |
| 2 | 3 | 4 | 5 | 6 | 7 | 8 | 6 | 7 | 8 | 9 | 10 | 11 | 12 | 4 | 5 | 6 | 7 | 8 | 9 | 10 | 8 | 9 | 10 | 11 | 12 | 13 | 14 | |
| 9 | 10 | 11 | 12 | 13 | 14 | 15 | 13 | 14 | 15 | 16 | 17 | 18 | 19 | 11 | 12 | 13 | 14 | 15 | 16 | 17 | 15 | 16 | 17 | 18 | 19 | 20 | 21 | |
| 16 | 17 | 18 | 19 | 20 | 21 | 22 | 20 | 21 | 22 | 23 | 24 | 25 | 26 | 18 | 19 | 20 | 21 | 22 | 23 | 24 | 22 | 23 | 24 | 25 | 26 | 27 | 28 | |
| 23 | 24 | 25 | 26 | 27 | 28 | 29 | 27 | 28 | 29 | 30 | | | | | 25 | 26 | 27 | 28 | 29 | 30 | 31 | 29 | 30 | | | | | |
| 30 | 31 | | | | | | | | | | | | | | | | | | | | | | | | | | | |

| July 2025 | | | | | | | August 2025 | | | | | | | September 2025 | | | | | | | October 2025 | | | | | | | | |
|-----------|----|----|----|----|----|----|-------------|----|----|----|----|----|----|----------------|----|----|----|----|----|----|--------------|----|----|----|----|----|----|---|---|
| Su | Mo | Tu | We | Th | Fr | Sa | Su | Mo | Tu | We | Th | Fr | Sa | Su | Mo | Tu | We | Th | Fr | Sa | Su | Mo | Tu | We | Th | Fr | Sa | | |
| | | 1 | 2 | 3 | 4 | 5 | | | | | | 1 | 2 | | 1 | 2 | 3 | 4 | 5 | 6 | | | | | | 1 | 2 | 3 | 4 |
| 6 | 7 | 8 | 9 | 10 | 11 | 12 | 3 | 4 | 5 | 6 | 7 | 8 | 9 | 7 | 8 | 9 | 10 | 11 | 12 | 13 | 5 | 6 | 7 | 8 | 9 | 10 | 11 | | |
| 13 | 14 | 15 | 16 | 17 | 18 | 19 | 10 | 11 | 12 | 13 | 14 | 15 | 16 | 14 | 15 | 16 | 17 | 18 | 19 | 20 | 12 | 13 | 14 | 15 | 16 | 17 | 18 | | |
| 20 | 21 | 22 | 23 | 24 | 25 | 26 | 17 | 18 | 19 | 20 | 21 | 22 | 23 | 21 | 22 | 23 | 24 | 25 | 26 | 27 | 19 | 20 | 21 | 22 | 23 | 24 | 25 | | |
| 27 | 28 | 29 | 30 | 31 | | | | | | | | 24 | 25 | 26 | 27 | 28 | 29 | 30 | 28 | 29 | 30 | 26 | 27 | 28 | 29 | 30 | 31 | | |
| | | | | | | | 31 | | | | | | | | | | | | | | | | | | | | | | |

| November 2025 | | | | | | | December 2025 | | | | | | | January 2026 | | | | | | | February 2026 | | | | | | | |
|---------------|----|----|----|----|----|----|---------------|----|----|----|----|----|----|--------------|----|----|----|----|----|----|---------------|----|----|----|----|----|----|--|
| Su | Mo | Tu | We | Th | Fr | Sa | Su | Mo | Tu | We | Th | Fr | Sa | Su | Mo | Tu | We | Th | Fr | Sa | Su | Mo | Tu | We | Th | Fr | Sa | |
| | | | | | | 1 | | 1 | 2 | 3 | 4 | 5 | 6 | | | | | 1 | 2 | 3 | 1 | 2 | 3 | 4 | 5 | 6 | 7 | |
| 2 | 3 | 4 | 5 | 6 | 7 | 8 | 7 | 8 | 9 | 10 | 11 | 12 | 13 | 4 | 5 | 6 | 7 | 8 | 9 | 10 | 8 | 9 | 10 | 11 | 12 | 13 | 14 | |
| 9 | 10 | 11 | 12 | 13 | 14 | 15 | 14 | 15 | 16 | 17 | 18 | 19 | 20 | 11 | 12 | 13 | 14 | 15 | 16 | 17 | 15 | 16 | 17 | 18 | 19 | 20 | 21 | |
| 16 | 17 | 18 | 19 | 20 | 21 | 22 | 21 | 22 | 23 | 24 | 25 | 26 | 27 | 18 | 19 | 20 | 21 | 22 | 23 | 24 | 22 | 23 | 24 | 25 | 26 | 27 | 28 | |
| 23 | 24 | 25 | 26 | 27 | 28 | 29 | 28 | 29 | 30 | 31 | | | | | 25 | 26 | 27 | 28 | 29 | 30 | 31 | | | | | | | |
| 30 | | | | | | | | | | | | | | | | | | | | | | | | | | | | |

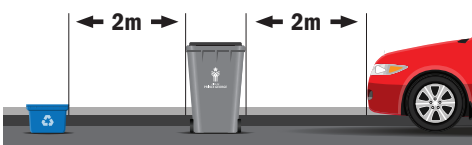
RESIDENTIAL GARBAGE COLLECTION

The City of Prince George will **NOT** collect any carts that are overflowing with garbage. Please make sure all garbage is contained inside your cart, and the lid is completely closed.

Carts must be at the curb by 8:00am on the day of collection, but no earlier than 4:00am.

Give It Space

Provide at least 2m of clearance on all sides, including from your recycling bins.



RECYCLING

Recycle BC provides curbside recycling in Prince George. Information about recyclables, collection schedules, and local recycling depots is available at recyclebc.ca/prince-george.

RADIO FREQUENCY ID SYSTEM

The City uses a Radio Frequency Identification (RFID) system to track carts and collect images of carts that are broken, overflowing, or otherwise not meeting the regulations in the City's Garbage Collection Bylaw. For more information, call 311 or visit princegeorge.ca/garbage.



BE BEAR AWARE

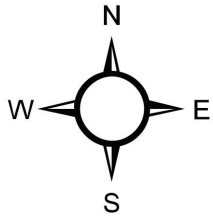
An average of 35 bears are destroyed in Prince George every year. Many are attracted to garbage carts and residential properties in search of food. You can help save a bear's life and improve the safety of our community by following these City bylaw regulations:

- Secure your garbage in a bear-resistant location such as a garage or shed.
- Place your garbage cart at the curb no earlier than 4:00am on collection day and remove it by 7:00pm that day.
- Remove bear attractants such as bird feeders, fruit, and pet food and keep your BBQ clean.

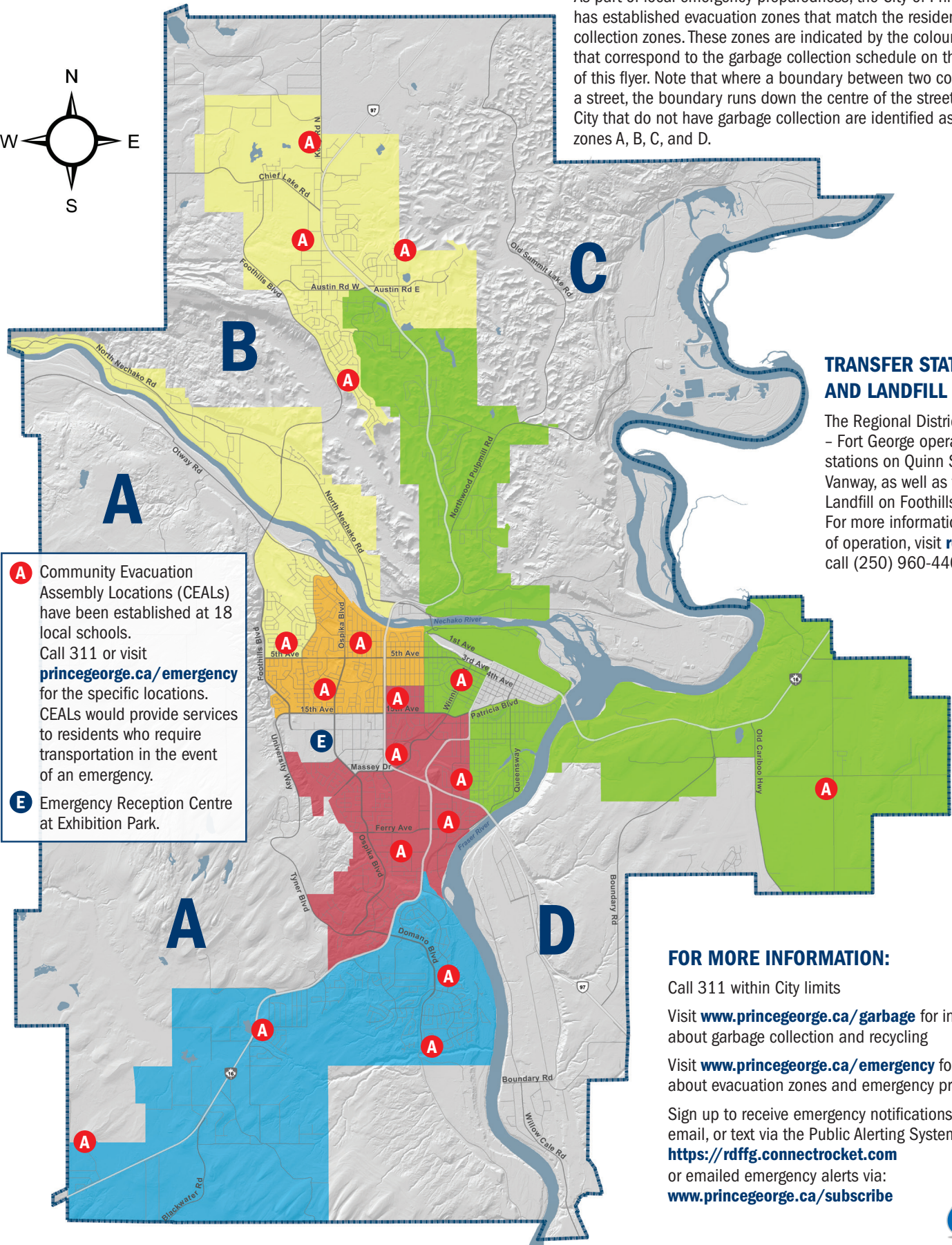
Failure to comply with City bylaws may result in a fine. View more info and Bear Smart tips at princegeorge.ca/wildlife.



GARBAGE COLLECTION AREAS AND EVACUATION ZONES



As part of local emergency preparedness, the City of Prince George has established evacuation zones that match the residential garbage collection zones. These zones are indicated by the colours on the map that correspond to the garbage collection schedule on the other side of this flyer. Note that where a boundary between two colours follows a street, the boundary runs down the centre of the street. Areas of the City that do not have garbage collection are identified as evacuation zones A, B, C, and D.



- A** Community Evacuation Assembly Locations (CEALs) have been established at 18 local schools. Call 311 or visit princegeorge.ca/emergency for the specific locations. CEALs would provide services to residents who require transportation in the event of an emergency.
- E** Emergency Reception Centre at Exhibition Park.

TRANSFER STATIONS AND LANDFILL

The Regional District of Fraser – Fort George operates transfer stations on Quinn Street and in Vanway, as well as the Regional Landfill on Foothills Boulevard. For more information and hours of operation, visit rdffg.bc.ca or call (250) 960-4400.

FOR MORE INFORMATION:

Call 311 within City limits

Visit www.princegeorge.ca/garbage for information about garbage collection and recycling

Visit www.princegeorge.ca/emergency for information about evacuation zones and emergency preparedness

Sign up to receive emergency notifications by phone, email, or text via the Public Alerting System:

<https://rdffg.connectrocket.com>

or emailed emergency alerts via:

www.princegeorge.ca/subscribe

