

JOHN NIELSEN HOUSE

Address: 2280 McBride Crescent

Date of Construction: 1957

Architect: Trelle A. Morrow

Builder: J. Stemlock, Supervisor

Adopted by the Heritage Commission: 2019-11-7

Last Updated: 2020-1-21



Courtesy of Trelle Morrow (2019)

Description

The Nielsen house is located on McBride, which is part of the prestigious Crescent neighbourhood, originally planned by Brett & Hall for the GTPR in 1913, and lies on the western side of the city.

Heritage Value

The original owners, John and Dina Nielsen, were prominent citizens in the city, and were the proprietors of West End Motors, the local International Truck agency with premises initially on the south-west corner of 3rd Avenue and Victoria Street.

The design of the house possesses heritage value in falling into line with the Post WW II tenets of the Modern Movement which were offered, and profusely practiced, in the architectural schools of the time. Low slope roofs were catching on as a recognized tenet for housing at this particular period.

Glazing for both the Living area and Dining are fairly expansive, a trend away from the single picture window found frequently in vernacular housing designs. The house represents a transition period between the small scale vernacular windows and the full width glazed walls developed in the Modern Movement era.

There is heritage value in the original pink colour used in this house, and even found in commercial buildings of the time. The original pink colour bathroom fixtures still remain in the house, and are in excellent condition.

The fireplace has been finished with Arizona sandstone, both on the interior and exterior, a popular, trendy material providing heritage value of the day.

The entrance to the house is recessed to allow weather protection, and the interior illustrates heritage value in detailing a split level entrance, popular in this time period.

Character-Defining Elements

- Construction materials chosen for the house were high quality and possess heritage value in marking the personal traits of the owners, as well as trends of the day.
- The high quality entrance sidelight and transom glazing are accomplished with the installation of an amber Cathedral glass
- Exterior wall finish is with vertical cedar boarding, accented with an Arizona sandstone planter arrangement.

- The quality of workmanship in construction is marked by the owner's selection of quality tradesmen put under the supervision of an experienced Superintendent.

Images

2280 McBride Crescent



Courtesy of Trelle A. Morrow (1957)

Arizona Sandstone Fireplace



Courtesy of Trelle A. Morrow (1957)



Courtesy of Trelle A. Morrow(2019)

Main Entrance



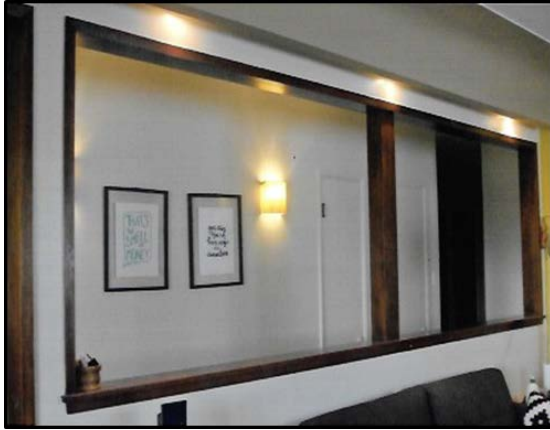
Haines Photo (2019)

View to Entrance Lobby



Courtesy of Trelle A. Morrow (2019)

Living Room to Interior Hallway



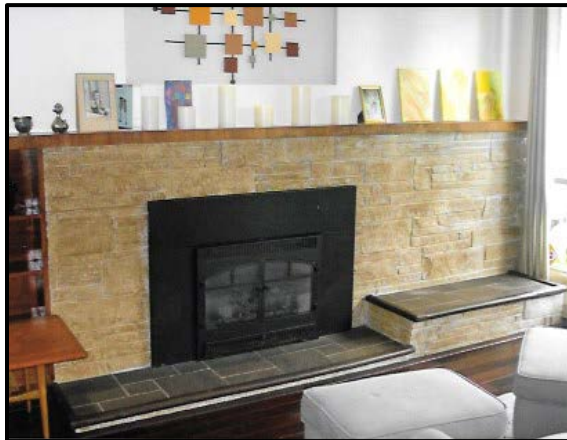
Courtesy of Trelle Morrow (2019)

Interior Corridor



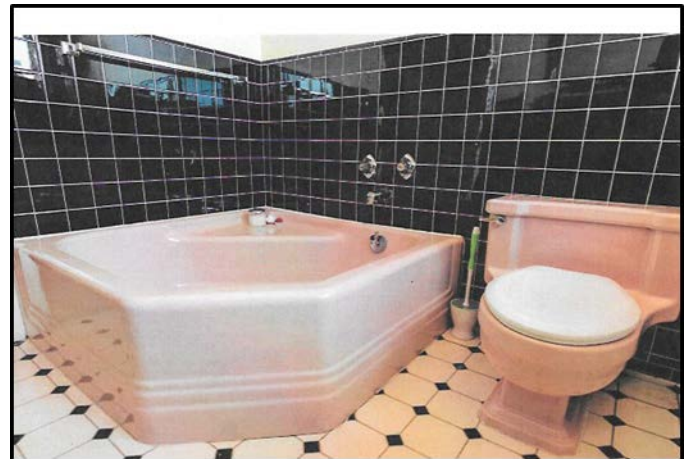
Courtesy of Trelle A. Morrow (2019)

Arizona Sandstone Fireplace



Courtesy of Trelle A. Morrow (2019)

Original Bathroom Fixtures (Original Color 1950s)



Courtesy of Trelle A. Morrow (2019)

Sources:

- Owner's collection of photographs.
- Architect's recollection of design events.