

**CITY OF PRINCE GEORGE**  
**BYLAW NO. 8590**

A City of Prince George Bylaw to close a portion of dedicated highway and to dispose of the lands.

**WHEREAS**, pursuant to Section 40 of the *Community Charter* S.B.C. 2003, c. 26, Council may by bylaw close a portion of a highway to traffic and remove highway dedication;

**AND WHEREAS**, pursuant to “City of Prince George Officer Positions and Delegation of Authority Bylaw No. 8340, 2011” the City of Prince George has approved the sale of an approximate 0.567 ha portion of road, dedicated by Plan 1065, District Lot 1605, Cariboo District, as shown on Appendix “A”;

**AND WHEREAS**, in accordance with section 40 of the *Community Charter*, notice of intention to adopt this bylaw has been delivered, posted and published, and an opportunity has been provided for persons who consider they are affected by the Bylaw to make representation to Council;

**NOW THEREFORE** the Council of the City of Prince George, in open meeting assembled, **ENACTS AS FOLLOWS:**

1. That the portion of highway that is dedicated as road on Plan 1065, adjacent to Lot 1, District Lot 1605, Cariboo District, Plan 30863, Except Plans 34562, PGP38585, PGP41824, PGP46265, PGP46269, BCP25534, BCP36464 and Lot 54, District Lot 1605, Cariboo District, Plan PGP38585, Except Plans PGP41824, PGP46265, BCP14774, BCP25534, BCP36464, and EPP8499 as shown outlined in bold black on the reduced copy of “Reference Plan to accompany Bylaw No. 8590, City of Prince George to close road dedicated on Plan 1065, District Lot 1605, Cariboo District”, referred to as Appendix “A”, attached to and forming part of this bylaw, is closed to traffic.
2. That the portion of highway lands dedicated as road on Plan 1065, adjacent to Lot 1, District Lot 1605, Cariboo District, Plan 30863, Except Plans 34562, PGP38585, PGP41824, PGP46265, PGP46269, BCP25534, BCP36464 and Lot 54, District Lot 1605, Cariboo District, Plan PGP38585, Except Plans PGP41824, PGP46265, BCP14774, BCP25534, BCP36464, and EPP8499, as shown outlined in bold black on the reduced copy of “Reference Plan to accompany Bylaw No. 8590, City of Prince George to close road dedicated on Plan 1065, District Lot 1605, Cariboo District”, referred to as Appendix “A”, attached to and forming part of this bylaw, is removed.
3. That prior to adoption, notice of intention to adopt this bylaw shall be published once a week for two consecutive weeks in a newspaper circulating in the municipality.
4. That the Mayor and Corporate Officer are hereby empowered to do all things necessary to give effect to this Bylaw.

- 5. This Bylaw shall come into full force and take effect upon its adoption and shall be filed with the Registrar of the applicable Land Title Office.
- 6. This Bylaw may be cited for all purposes as "Glen Lyon Cascades Road Closure Bylaw No. 8590, 2014".

READ A FIRST TIME THIS 7<sup>th</sup> DAY OF JULY , 2014.

READ A SECOND TIME THIS 7<sup>th</sup> DAY OF JULY , 2014.

First Two readings passed by a unanimous decision of Members of City Council present and eligible to vote.


READ A THIRD TIME THIS 30<sup>th</sup> DAY OF JULY , 2014.


Third Reading passed by a unanimous decision of Members of City Council present and eligible to vote.

Certified correct as passed Third Reading, this 31<sup>st</sup> day of JULY , 2014.

  
 \_\_\_\_\_  
 DEPUTY CORPORATE OFFICER OF  
 THE CITY OF PRINCE GEORGE

ADOPTED THIS 18<sup>th</sup> DAY OF AUGUST , 2014,  
 BY A UNANIMOUS DECISION OF ALL MEMBERS OF CITY COUNCIL PRESENT AND  
 ELIGIBLE TO VOTE.

  
 \_\_\_\_\_  
 MAYOR

  
 \_\_\_\_\_  
 DEPUTY CORPORATE OFFICER

PLAN EPP41946

**REFERENCE PLAN TO ACCOMPANY BYLAW NO. 8590,  
CITY OF PRINCE GEORGE TO CLOSE ROAD DEDICATED  
ON PLAN 1065, DISTRICT LOT 1605, CARIBOO DISTRICT.**

PURSUANT TO SECTION 120 OF THE LAND TITLE ACT AND SECTION 40 OF THE COMMUNITY CHARTER.  
BCGS 93G.087

INTEGRATED SURVEY AREA No. 13, PRINCE GEORGE, M0083 (CSRS)

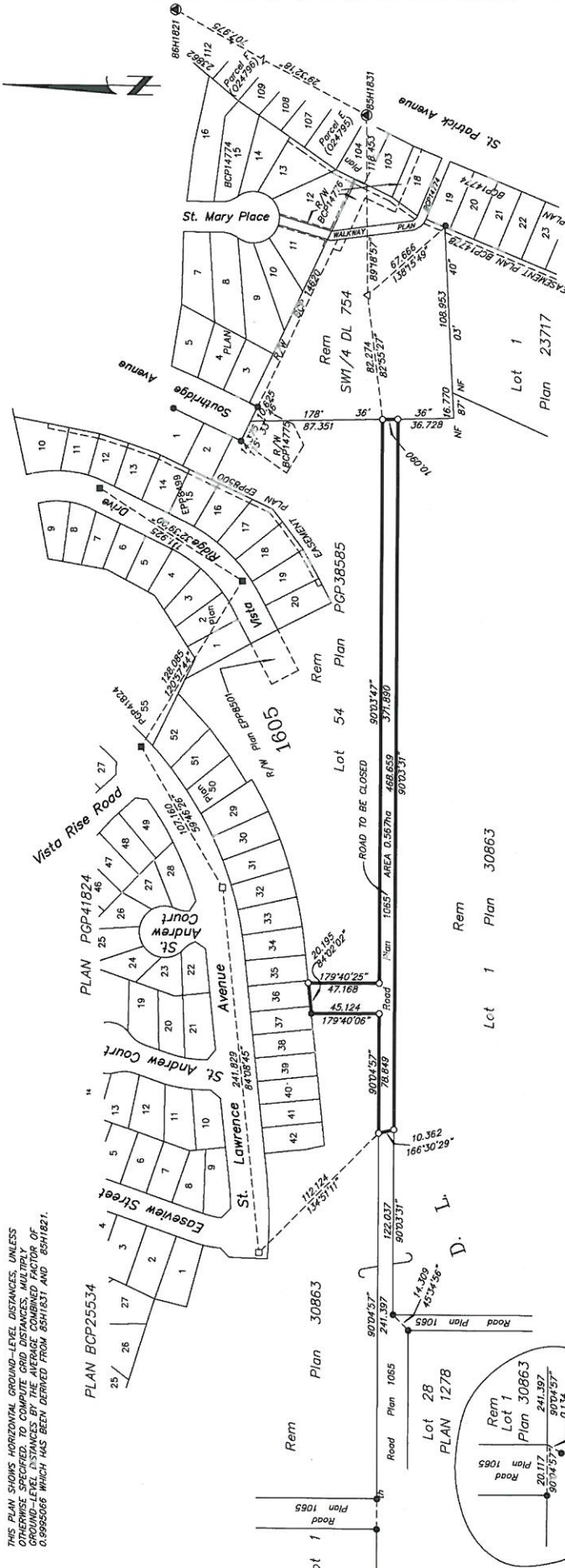
THE INTEGRATED PLOT SIZE OF THIS PLAN IS 569mm IN WIDTH BY 432mm IN HEIGHT (C-SEE) WHEN PLOTTED AT A SCALE OF 1:2000

ALL DISTANCES ARE HORIZONTAL GROUND-LEVEL, AND ARE SHOWN IN METRES AND DECIMALS THEREOF, UNLESS OTHERWISE INDICATED.

LEGEND

- CONTROL MONUMENT FOUND
- LEAD PLUG FOUND
- 100mm IRON POST FOUND
- STANDARD IRON POST PLACED
- △ TRANSVERSE HUB PLACED

THIS PLAN SHOWS HORIZONTAL GROUND-LEVEL DISTANCES, UNLESS OTHERWISE SPECIFIED, TO COMPUTE GRID DISTANCES. MULTIPLY GROUND-LEVEL DISTANCES BY THE AVERAGE COMBINED FACTOR OF 0.9995066 WHICH HAS BEEN DERIVED FROM 85H1831 AND 85H1821.



Lot 1 Plan 30863

Lot 1 Plan 23717

Lot 1 Plan 1065

**McElhenny**  
McElhenny Associates  
Land Surveying Ltd.  
Prince George, B.C.  
E-mail: pmads@mcelhenny.com  
Ph: (250) 561-2229 Fax: (250) 563-1941  
DL - 1605 File No. - 6094-BL  
CPG FILE NO. SD100404

THIS FIELD SURVEY REPRESENTED BY THIS PLAN WAS COMPLETED ON THE \_\_\_\_ DAY OF \_\_\_\_\_, 2013.  
DALE KEDWILL BCLS

THIS PLAN LIES WITHIN THE REGIONAL DISTRICT OF FRASER - FORT GEORGE.