

CITY OF PRINCE GEORGE
BYLAW NO. 9129, 2020

A Bylaw of the City of Prince George to permanently close a portion of road located adjacent to 2895 Gunn Road and to remove its road dedication for the purpose of future disposal of the lands.

WHEREAS the Council of the City of Prince George deems it desirable that an approximate 0.161 hectares of road dedicated on Plan 902, as shown on Reference Plan EPP103617, adjacent to the properties legally described as Parcel C (P30015) of Block 61, District Lot 629, Cariboo District, and Parcel A (P30012) of Block 61, District Lot 629, Cariboo District, be closed to traffic, and that the road dedication thereof be removed;

AND WHEREAS, in accordance with section 40 of the *Community Charter*, notice of intention to adopt this bylaw has been delivered, posted and published, and an opportunity has been provided for persons who consider they are affected by this bylaw to make representations to Council;

NOW THEREFORE the Council of the City of Prince George, in open meeting assembled, **ENACTS AS FOLLOWS:**

1. That the portion of road dedicated on Plan 902, adjacent to the properties legally described as Parcel C (P30015) of Block 61, District Lot 629, Cariboo District and Parcel A (P30012) of Block 61, District Lot 629, Cariboo District as shown outlined in bold black on the proposed Reference Plan EPP103617, attached hereto as Appendix "A" and forming part of this Bylaw, is closed to traffic.
2. That the portion of road dedicated on Plan 902, adjacent to the properties legally described as Parcel C (P30015) of Block 61, District Lot 629, Cariboo District and Parcel A (P30012) of Block 61, District Lot 629, Cariboo District, as shown outlined in bold black on the proposed Reference Plan EPP103617, attached hereto as Appendix "A" and forming part of this Bylaw, is removed.
3. The Mayor and Corporate Officer are hereby empowered to do all things necessary to give effect to this Bylaw.
4. This Bylaw shall come into full force and take effect upon its adoption and shall be filed with the Registrar of the applicable Land Title Office.
5. This Bylaw may be cited for all purposes as "City of Prince George 2895 Gunn Road Road Closure Bylaw No. 9129, 2020".

READ A FIRST TIME THIS 17TH DAY OF **AUGUST** , 2020.

READ A SECOND TIME THIS 17TH DAY OF **AUGUST** , 2020.

First two readings passed by a **UNANIMOUS** decision of Members of City Council present and eligible to vote.

READ A THIRD TIME THIS **14TH** DAY OF **SEPTEMBER**, 2020.

Third reading passed by a **UNANIMOUS** decision of Members of City Council present and eligible to vote.

Certified correct as passed third reading this **15TH** day of **SEPTEMBER**, 2020.


CORPORATE OFFICER OF
THE CITY OF PRINCE GEORGE

APPROVED BY THE MINISTER OF TRANSPORTATION AND INFRASTRUCTURE PURSUANT TO THE PROVISIONS OF SECTION 41(3) OF THE *COMMUNITY CHARTER*.

THIS **30th** DAY OF **September**, 2020.


for MINISTER OF TRANSPORTATION
AND INFRASTRUCTURE

ADOPTED THIS **5TH** DAY OF **OCTOBER**, 2020,

BY A **UNANIMOUS** DECISION OF ALL MEMBERS OF CITY COUNCIL PRESENT AND ELIGIBLE TO VOTE.


MAYOR


CORPORATE OFFICER

REFERENCE PLAN TO ACCOMPANY BY-LAW No. 9129, 2020 (PRINCE GEORGE, BC),
TO CLOSE A PORTION OF ROAD ADJACENT TO BLOCK 61, SHOWN DEDICATED ON
PLAN 902, DISTRICT LOT 629, CARIBOO DISTRICT.

PLAN EPP103617

PURSUANT TO SECTION 120 OF THE LAND TITLE ACT AND
SECTION 40 OF THE COMMUNITY CHARTER.

THIS PLAN LIES WITHIN INTEGRATED SURVEY AREA
No. 39 PRINCE GEORGE, BC, NAD83 (CSRS) 4.0.0.BC.1

BCGS 93G.097



THE INTENDED PLOT SIZE OF THIS PLAN IS 560mm IN WIDTH BY 432mm IN
HEIGHT (C SIZE) WHEN PLOTTED AT A SCALE OF 1:750.

ALL DISTANCES ARE IN METRES AND DECIMALS THEREOF.

GRID BEARINGS ARE DERIVED FROM OBSERVATIONS BETWEEN GEODETIC
CONTROL MONUMENTS 85H1287 AND 85H1257.

THE UTM COORDINATES AND ESTIMATED ABSOLUTE ACCURACY ACHIEVED
HAVE BEEN DERIVED FROM MASCOT PUBLISHED COORDINATES AND
STANDARD DEVIATIONS FOR GEODETIC CONTROL MONUMENT 85H1257.

THIS PLAN SHOWS HORIZONTAL GROUND-LEVEL DISTANCES UNLESS
OTHERWISE SPECIFIED. TO COMPUTE GRID DISTANCES, MULTIPLY
GROUND-LEVEL DISTANCES BY THE AVERAGE COMBINED FACTOR OF
0.9995004 WHICH HAS BEEN DERIVED FROM GEODETIC CONTROL MONUMENT
85H1287.

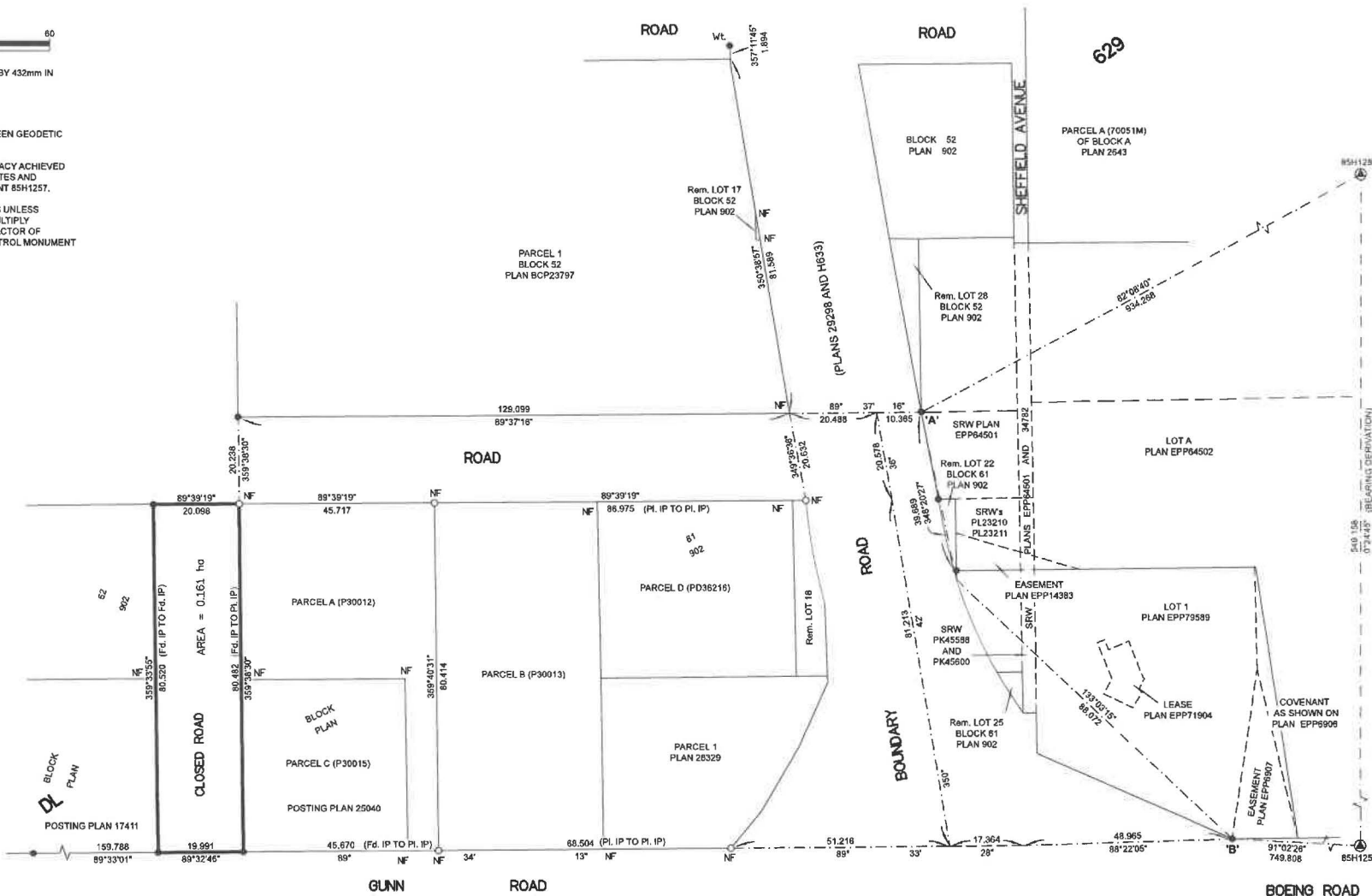
NOTE:
THIS PLAN SHOWS ONE OR MORE WITNESS POSTS WHICH
ARE NOT SET ON THE TRUE CORNER(S).

SOME POSTS AND LINES ARE EXAGGERATED FOR CLARITY.

LEGEND

SYMBOLS		DESCRIPTION
FOUND	PLACED	
		CONTROL MONUMENT
		STANDARD IRON POST
		ESTIMATED ABSOLUTE ACCURACY

GEOREFERENCING POSITIONS UTM COORDINATES, ZONE 10, NAD 83 (CSRS), 4.0.0.BC.1			
STATION	NORTHING	EASTING	EAA
Fd. IP 'A'	5972764.11	521144.52	0.11
Fd. IP 'B'	5972665.17	521216.88	0.11



THE FIELD SURVEY REPRESENTED BY THIS PLAN WAS COMPLETED
ON THE 23rd DAY OF JUNE, 2020
SHAUNA C. GOERTZEN, BCLS 798

THIS PLAN LIES WITHIN THE REGIONAL DISTRICT OF FRASER-FORT GEORGE.

McElhanney
McELHANNEY ASSOCIATES
LAND SURVEYING LTD.
Suite 12
558 North Nechako Road
Prince George BC
Canada V2K 1A1
Tel 250 561 2229
Fax 250 561 2229
File No. 2341-8747-RC