

CITY OF PRINCE GEORGE
BYLAW NO. 9151, 2020

A Bylaw of the City of Prince George to permanently close a portion of road located adjacent to 390 Nicholson Street and to remove its road dedication for the purpose of future disposal of the lands.

WHEREAS the Council of the City of Prince George deems it desirable that an approximate 720.6 m² (square metres) of road dedicated on Plan 752, as shown on Reference Plan EPP107555 adjacent to the property legally described as Parcel C (PG36163) of Block 132, District Lot 938, Cariboo District be closed to traffic, and that the road dedication thereof be removed;

AND WHEREAS, in accordance with section 40 of the *Community Charter*, notice of intention to adopt this Bylaw has been delivered, posted and published, and an opportunity has been provided for persons who consider they are affected by this Bylaw to make representations to Council;

NOW THEREFORE the Council of the City of Prince George, in open meeting assembled, **ENACTS AS FOLLOWS:**

1. That the portion of road dedicated on Plan 752, adjacent to the property legally described as Parcel C (PG36163) of Block 132, District Lot 938, Cariboo District as shown outlined in bold black on the Reference Plan EPP107555, attached hereto as Appendix "A" and forming part of this Bylaw, is closed to traffic.
2. That the portion of road dedicated on Plan 752, adjacent to the property legally described as Parcel C (PG36163) of Block 132, District Lot 938, Cariboo District as shown outlined in bold black on the Reference Plan EPP107555, attached hereto as Appendix "A" and forming part of this Bylaw, is removed.
3. The Mayor and Corporate Officer are hereby empowered to do all things necessary to give effect to this Bylaw.
4. This Bylaw shall come into full force and take effect upon its adoption and shall be filed with the Registrar of the applicable Land Title Office.
5. This Bylaw may be cited for all purposes as "City of Prince George 390 Nicholson Street Road Closure Bylaw No. 9151, 2020".

READ A FIRST TIME THIS **8TH** DAY OF **FEBRUARY** , 2021.

READ A SECOND TIME THIS **8TH** DAY OF **FEBRUARY** , 2021.

First two readings passed by a **UNANIMOUS** decision of Members of City Council present and eligible to vote.

READ A THIRD TIME THIS **8TH** DAY OF **MARCH**, 2021.

Third reading passed by a **UNANIMOUS** decision of Members of City Council present and eligible to vote.

Certified correct as passed third reading this **9TH** day of **MARCH**, 2021.


CORPORATE OFFICER OF
THE CITY OF PRINCE GEORGE

APPROVED BY THE MINISTER OF TRANSPORTATION AND INFRASTRUCTURE PURSUANT TO THE PROVISIONS OF SECTION 41(3) OF THE COMMUNITY CHARTER.

THIS *19* DAY OF *March*, 2021.

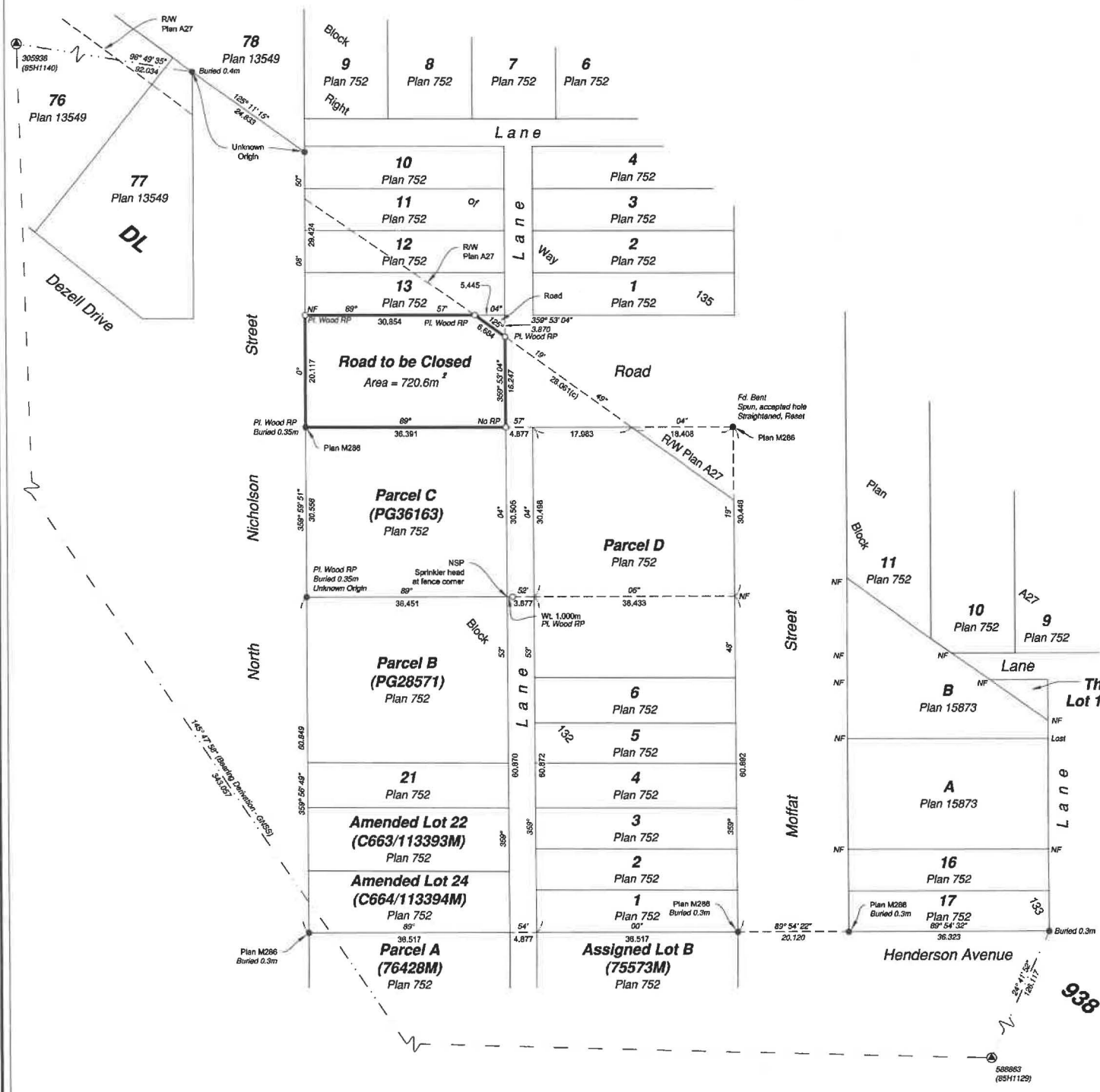

for MINISTER OF TRANSPORTATION
AND INFRASTRUCTURE

ADOPTED THIS **12TH** DAY OF **APRIL**, 2021,

BY A **UNANIMOUS** DECISION OF ALL MEMBERS OF CITY COUNCIL PRESENT AND ELIGIBLE TO VOTE.


MAYOR


CORPORATE OFFICER



Reference Plan to Accompany By-Law No. 9151 (City of Prince George) Closing a Portion of Road shown dedicated on Plan 752, District Lot 938, Cariboo District.

Pursuant to Section 120 of the Land Title Act and Section 40 of the Community Charter. Integrated survey area No. 39 Prince George, BC, NAD83 (CSRS) 4.0.0.BC.1

BCGS 93G.097



The intended plot size of this plan is 559mm in width by 432mm in height (C size) when plotted at a scale of 1:500.

All distances are in metres and decimals thereof.

Grid bearings are derived from observations between geodetic control monuments 305938(85H1140) and 588863(85H1129) and are referred to the central meridian of UTM Zone 10 North (123° west longitude).

The UTM coordinates and estimated absolute accuracy achieved have been derived from MASCOIT published coordinates and standard deviations for geodetic control monuments 305938(85H1140) and 588863(85H1129).

This plan shows horizontal ground-level distances unless otherwise specified. To compute grid distances, multiply ground-level distances by the average combined factor of 0.9925097 which has been derived from control monument 305938(85H1140).

Note: This plan shows one or more witness posts which are not set on the true corner(s).

Legend

Found	Placed	Description
△	○	Control Monument
●	○	Standard Iron Post
CSF		Combined Scale Factor
EAA		Estimated Absolute Accuracy
NSP		Not Suitable to Post
(c)		Calculated

Georeferencing Positions				
UTM Coordinates, Zone 10, NAD 83 (CSRS), 4.0.0.BC.1				
Station	Northing	Easting	EAA	CSF
305938	5975581.31	513889.42	0.05	0.9995097
588863	5975277.71	514082.15	0.05	0.9995101

This plan lies within the jurisdiction of the approving officer for the City of Prince George.

The field survey represented by this plan was completed on the 4th day of December, 2020.

Scott A. Maguire, BCLS 909

This plan lies within the Regional District of Fraser-Fort George

File: 20144-RC

KOEHLER LAND SURVEYING INC.
1693 Lyon Street South
Prince George, BC V2H 1T3
Tel: (250) 614-9703