

CITY OF PRINCE GEORGE
BYLAW NO. 9224, 2021

A Bylaw of the City of Prince George to permanently close a portion of road located adjacent to 8171 Prince Edward Crescent and to remove its road dedication for the purpose of future disposal of the lands.

WHEREAS the Council of the City of Prince George deems it desirable that an approximate 102.5m² (square metres) of road dedicated on Plan 23117, District Lot 2013, Cariboo District, as shown on Reference Plan EPP119188, adjacent to the property legally described as Lot 30, District Lot 2013, Cariboo District, Plan 23117, be closed to traffic, and that the road dedication thereof be removed;

AND WHEREAS, in accordance with section 40 of the *Community Charter*, notice of intention to adopt this Bylaw has been delivered, posted and published, and an opportunity has been provided for persons who consider they are affected by this Bylaw to make representations to Council;

NOW THEREFORE the Council of the City of Prince George, in open meeting assembled, **ENACTS AS FOLLOWS:**

1. That the portion of road dedicated on Plan 23117, District Lot 2013, Cariboo District, as shown outlined in bold black on Reference Plan EPP119188, adjacent to the property legally described as Lot 30, District Lot 2013, Cariboo District, Plan 23117, attached hereto as Appendix "A" and forming part of this Bylaw, is closed to traffic.
2. That the portion of road dedicated on Plan 23117, District Lot 2013, Cariboo District, as shown outlined in bold black on Reference Plan EPP119188, adjacent to the property legally described as Lot 30, District Lot 2013, Cariboo District, Plan 23117, attached hereto as Appendix "A" and forming part of this Bylaw, is removed.
3. The Mayor and Corporate Officer are hereby empowered to do all things necessary to give effect to this Bylaw.
4. This Bylaw shall come into full force and take effect upon its adoption and shall be filed with the Registrar of the applicable Land Title Office.
5. This Bylaw may be cited for all purposes as "City of Prince George 8171 Prince Edward Crescent Road Closure Bylaw No. 9224, 2021".

READ A FIRST TIME THIS **21ST** DAY OF **SEPTEMBER** , **2022.**

READ A SECOND TIME **21ST** DAY OF **SEPTEMBER** , **2022.**
THIS

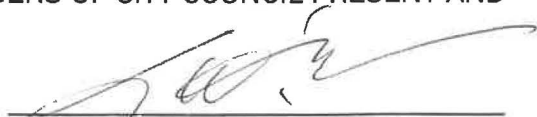
First two readings passed by a **UNANIMOUS** decision of Members of City Council present and eligible to vote.

READ A THIRD TIME THIS **28TH** DAY OF **NOVEMBER**, **2022.**

Third reading passed by a **UNANIMOUS** decision of Members of City Council present and eligible to vote.

ADOPTED THIS **19TH** DAY OF **DECEMBER**, **2022,**

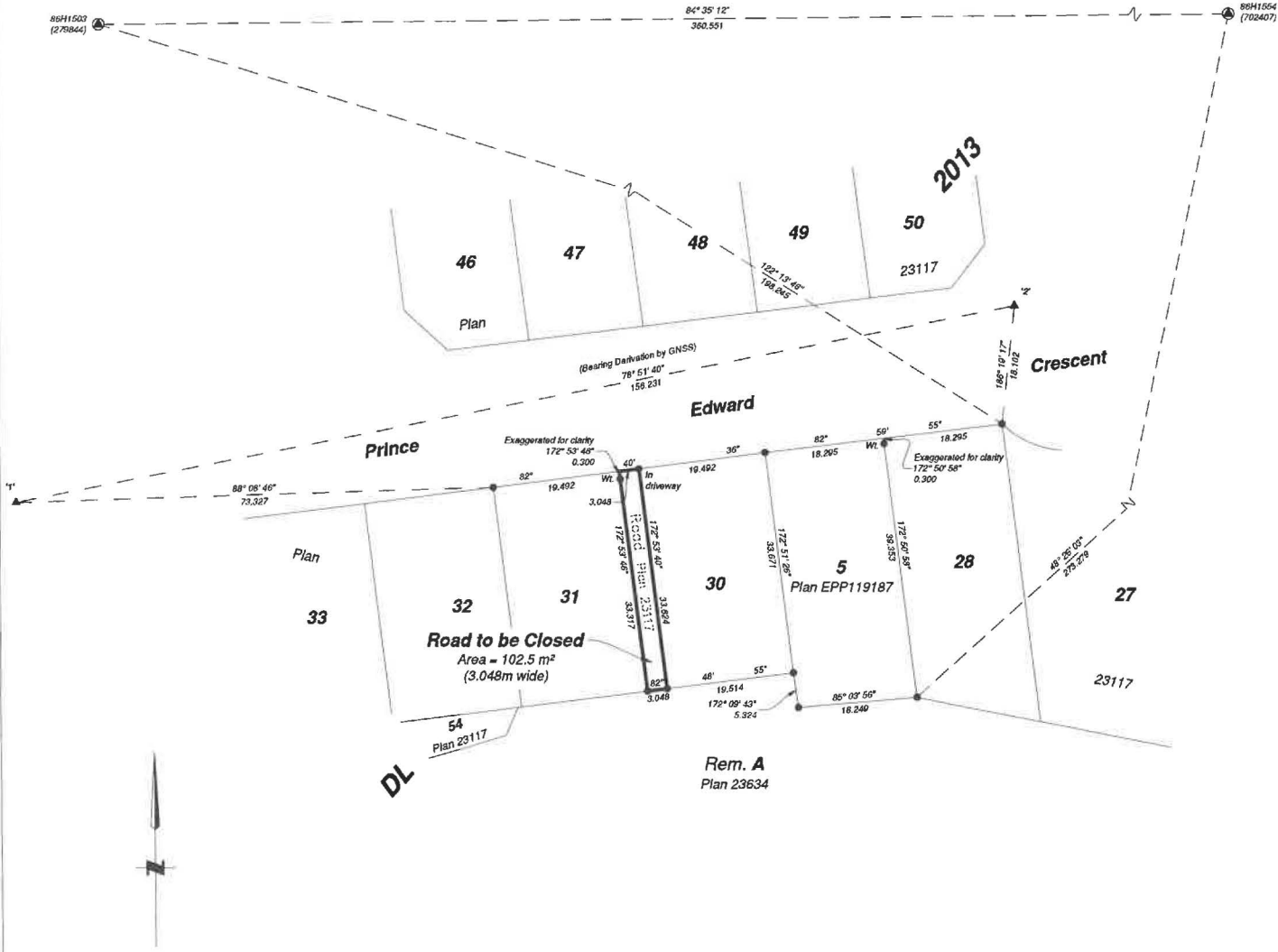
BY A **UNANIMOUS** DECISION OF ALL MEMBERS OF CITY COUNCIL PRESENT AND ELIGIBLE TO VOTE.



MAYOR



CORPORATE OFFICER



**Reference Plan to Accompany
By-Law No. 9224 (City of Prince
George) Closing a Portion of Road
Shown Dedicated on Plan 23117,
District Lot 2013, Cariboo District**

Pursuant to Section 120 of the Land Title Act and Section 40 of the Community Charter

Integrated survey area No. 39 Prince George, BC, NAD83 (CSRS)
4.0.0.BC.1

BCGS 93G.087



The intended plot size of this plan is 560mm in width by 432mm in height (C size) when plotted at a scale of 1:500.

All distances are in metres and decimals thereof.

Grid bearings are derived from GNSS observations and are referred to the central meridian of UTM Zone 10 North (123° west longitude).

This plan shows horizontal ground-level distances unless otherwise specified. To compute grid distances, multiply ground-level distances by the combined factor of 0.9995064 which has been derived by single point positioning techniques using the precise point positioning (PPP) services of Natural Resources Canada. The average combined factor has been determined based on an ellipsoidal elevation of 615.6 metres.

The UTM coordinates and estimated absolute accuracies shown on this plan are a result of an independent and accurate GNSS survey.

Positions for Geodetic Control Monuments which are calculated from information on this plan may not agree with official published coordinates.

Note:
This plan shows one or more witness posts which are not set on the true corner(s).
Some posts are exaggerated for clarity.
All placed posts shown on this plan have placed reference posts.

Legend

Symbols	Description
Found	Placed
⊙	Control Monument
●	Standard Iron Post
▲	Traverse Hub
CSF	Combined Scale Factor
EAA	Estimated Absolute Accuracy
Wt.	Witness

Georeferencing Positions				
UTM Coordinates, Zone 10, NAD 83 (CSRS), 2002.0				
Station	Northing	Easting	EAA	CSF
1	5986612.94	515124.57	0.05	0.9995064
2	5986643.10	515277.78	0.05	0.9995074

The field survey represented by this plan was completed on the 10th day of August, 2022

Albert Koehler, BCLS 974

This plan lies within the City of Prince George

This plan lies within the Regional District of Fraser Fort-George

This plan lies within the jurisdiction of the approving officer for the City of Prince George

File: 220716-21142-2-GRID-RC
KOEHLER LAND SURVEYING INC.
674 - 2nd Avenue
Prince George, BC V2L 3A2
Tel. (250) 614-9703