



CLASSIFICATION: GREEN SPACE
LOCATION: 1330 ABERDEEN ROAD
NEIGHBOURHOOD: ABERDEEN

PARK SITE

5/12

INFRASTRUCTURE

14/63

NEIGHBOURHOOD CONTEXT

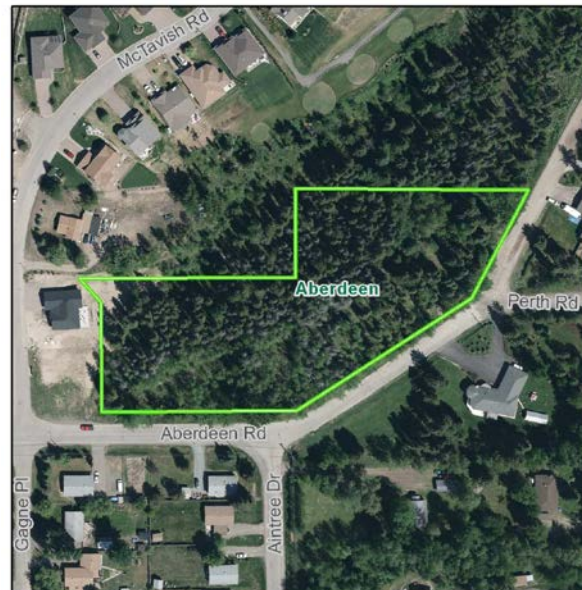
7/15

SAFETY & SECURITY

5/6

ENVIRONMENT

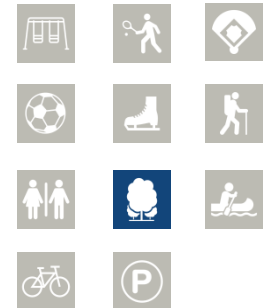
0/6



SUMMARY

- Large undeveloped green space
- No other playground in the neighbourhood
- Future utility space

INFRASTRUCTURE & AMENITIES



UTILITIES





CLASSIFICATION: GREEN SPACE
LOCATION: 6155 ACADIA PLACE
NEIGHBOURHOOD: COLLEGE HEIGHTS

PARK SITE

6/12

INFRASTRUCTURE

7/63

NEIGHBOURHOOD CONTEXT

10/15

SAFETY & SECURITY

5/6

ENVIRONMENT

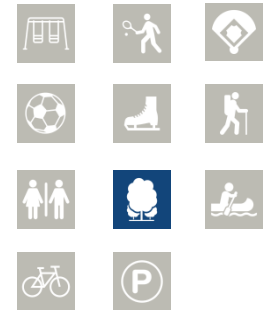
0/6



SUMMARY

- Small undeveloped site
- Borders Essex greenspace

INFRASTRUCTURE & AMENITIES



UTILITIES





CLASSIFICATION: NEIGHBOURHOOD
LOCATION: 1253 BOWRON CRES.
NEIGHBOURHOOD: FOOTHILLS

PARK SITE

6/12

INFRASTRUCTURE

13/63

NEIGHBOURHOOD CONTEXT

12/15

SAFETY & SECURITY

5/6

ENVIRONMENT

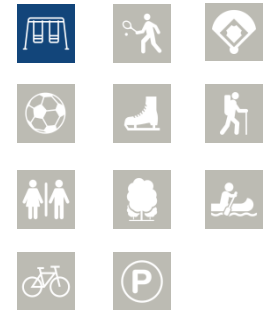
0/6



SUMMARY

- Small Neighbourhood Park with older playground
- Surrounded by well established houses and high density housing
- Links to Eaglenest Park

INFRASTRUCTURE & AMENITIES



UTILITIES





CLASSIFICATION: NEIGHBOURHOOD
LOCATION: 4521 AZURE AVENUE
NEIGHBOURHOOD: FOOTHILLS

PARK SITE

3/12

INFRASTRUCTURE

30/63

NEIGHBOURHOOD CONTEXT

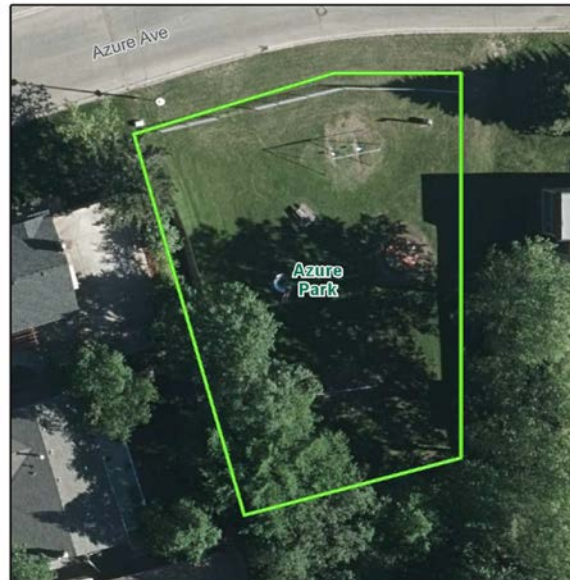
9/15

SAFETY & SECURITY

6/6

ENVIRONMENT

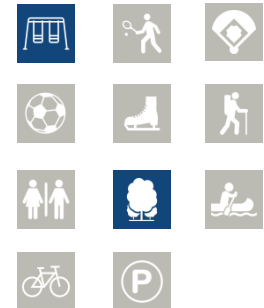
5/6



SUMMARY

- Small Park
- Neighbourhood secluded by Foothills Blvd.
- Older playground equipment

INFRASTRUCTURE & AMENITIES



UTILITIES





CLASSIFICATION: NEIGHBOURHOOD
LOCATION: 4422 BAKER ROAD
NEIGHBOURHOOD: UPPER PEDEN HILL

PARK SITE

7/12

INFRASTRUCTURE

23/63

NEIGHBOURHOOD CONTEXT

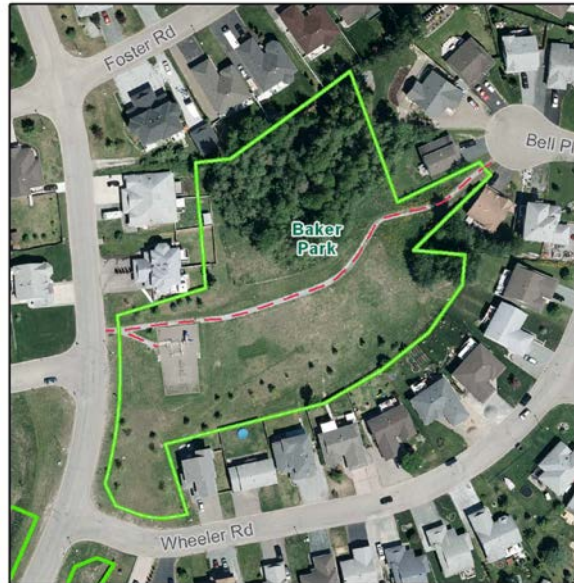
9/15

SAFETY & SECURITY

6/6

ENVIRONMENT

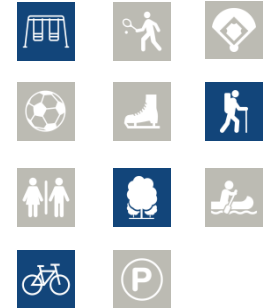
0/6



SUMMARY

- Newer playground funded by Community Association
- Nice large neighbourhood park with a granular trail linking the neighbourhood

INFRASTRUCTURE & AMENITIES



UTILITIES





CLASSIFICATION: ATHLETIC
LOCATION: 4055 BALSUM ROAD
NEIGHBOURHOOD: CROFT

PARK SITE

5/12

INFRASTRUCTURE

26/63

NEIGHBOURHOOD CONTEXT

10/15

SAFETY & SECURITY

5/6

ENVIRONMENT

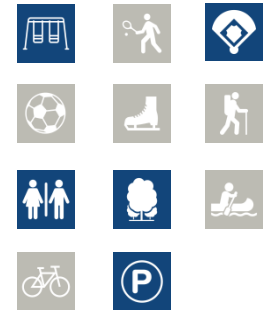
0/6



SUMMARY

- Athletic Park with a single ball diamond used by PG Youth Baseball
- Older playground
- Adjacent to Hart Ski Hill
- Park is in a bowl surrounded by sloped natural areas

INFRASTRUCTURE & AMENITIES



UTILITIES





CLASSIFICATION: NEIGHBOURHOOD
LOCATION: 1211 BEDNESTI CRES.
NEIGHBOURHOOD: LAKEWOOD

PARK SITE

7/12

INFRASTRUCTURE

27/63

NEIGHBOURHOOD CONTEXT

9/15

SAFETY & SECURITY

6/6

ENVIRONMENT

0/6



SUMMARY

- Small open park
- Newer playground and benches funded by Community Association
- Linked trails and walkways

INFRASTRUCTURE & AMENITIES



UTILITIES





CLASSIFICATION: NATURE
LOCATION: 5235 GISCOME ROAD
NEIGHBOURHOOD: BLACKBURN

PARK SITE

12/12

INFRASTRUCTURE

23/63

NEIGHBOURHOOD CONTEXT

8/15

SAFETY & SECURITY

4/6

ENVIRONMENT

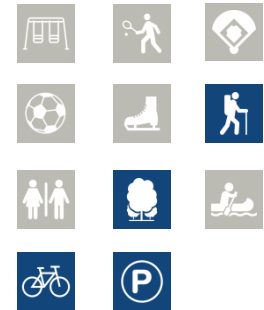
1/6



SUMMARY

- Forested area with trails and picnic shelter
- Adjacent to school and near Blackburn School and Park

INFRASTRUCTURE & AMENITIES



UTILITIES





CLASSIFICATION: COMMUNITY
LOCATION: 2451 BLACKBURN ROAD
NEIGHBOURHOOD: BLACKBURN

PARK SITE

11/12

INFRASTRUCTURE

31/63

NEIGHBOURHOOD CONTEXT

6/15

SAFETY & SECURITY

6/6

ENVIRONMENT

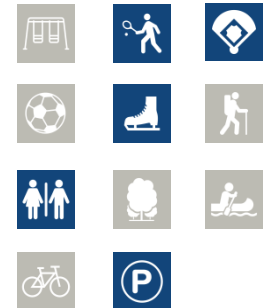
0/6



SUMMARY

- Community Park with ball diamonds, sand volleyball courts and hard surface courts
- Adjacent to Community Hall and School
- Lit tennis courts are used as an ice rink in the winter

INFRASTRUCTURE & AMENITIES



UTILITIES





CLASSIFICATION: GREEN SPACE
LOCATION: 555 OSPIKA BLVD.
NEIGHBOURHOOD: HIGHLAND/HIGHGLEN

PARK SITE

3/12

INFRASTRUCTURE

15/63

NEIGHBOURHOOD CONTEXT

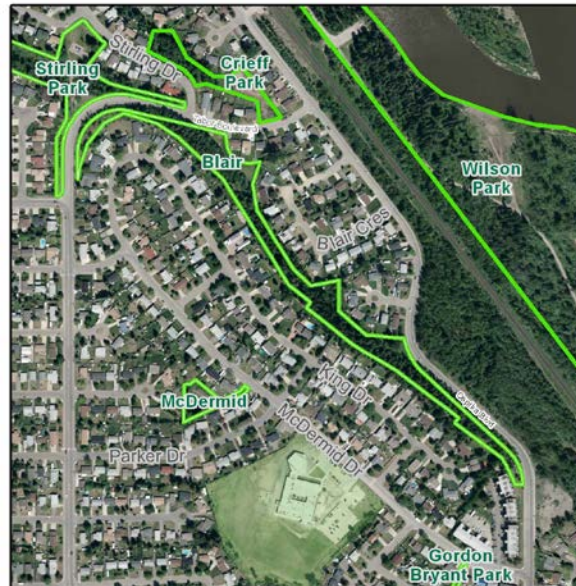
8/15

SAFETY & SECURITY

4/6

ENVIRONMENT

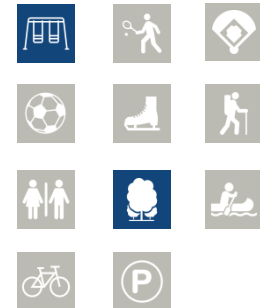
0/6



SUMMARY

- Linear green space with steep slopes
- Older playground near Tabor Blvd.

INFRASTRUCTURE & AMENITIES



UTILITIES





CLASSIFICATION: GREEN SPACE
LOCATION: 440 BRIGADE DRIVE
NEIGHBOURHOOD: HIGHLAND/HIGHGLEN

PARK SITE

3/12

INFRASTRUCTURE

10/63

NEIGHBOURHOOD CONTEXT

8/15

SAFETY & SECURITY

5/6

ENVIRONMENT

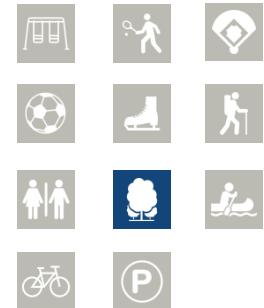
0/6



SUMMARY

- Green space across from Lakewood park
- Rustic trails throughout a sloped bowl area

INFRASTRUCTURE & AMENITIES



UTILITIES





CLASSIFICATION: NEIGHBOURHOOD
LOCATION: 2550 BYNG AVENUE
NEIGHBOURHOOD: WESTWOOD

PARK SITE

7/12

INFRASTRUCTURE

23/63

NEIGHBOURHOOD CONTEXT

8/15

SAFETY & SECURITY

5/6

ENVIRONMENT

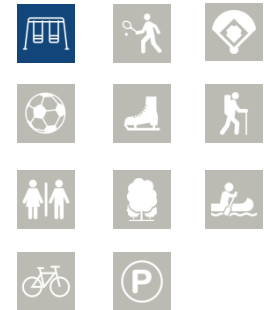
0/6



SUMMARY

- Neighbourhood park with connections to community
- Older playground equipment surrounded by dense residential area
- Older gazebo in park
- Flat open spaces in central area

INFRASTRUCTURE & AMENITIES



UTILITIES





CLASSIFICATION: NEIGHBOURHOOD
LOCATION: 4101 22ND AVENUE
NEIGHBOURHOOD: PINEWOOD/PINECONE

PARK SITE

6/12

INFRASTRUCTURE

14/63

NEIGHBOURHOOD CONTEXT

11/15

SAFETY & SECURITY

4/6

ENVIRONMENT

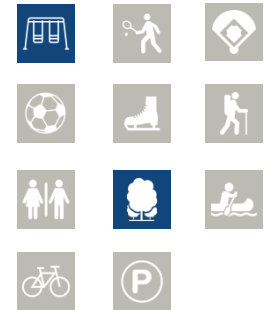
0/6



SUMMARY

- Older playground in heavily treed park
- Adjacent to Exhibition Park and Pinewood School

INFRASTRUCTURE & AMENITIES



UTILITIES





CLASSIFICATION: GREEN SPACE
LOCATION: 7266 NORTH NECHAKO
NEIGHBOURHOOD: NORTH NECHAKO

PARK SITE

8/12

INFRASTRUCTURE

7/63

NEIGHBOURHOOD CONTEXT

2/15

SAFETY & SECURITY

4/6

ENVIRONMENT

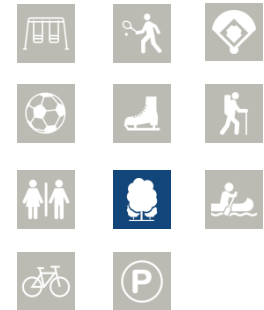
0/6



SUMMARY

- Small undeveloped site
- Adjacent to North Nechako Road

INFRASTRUCTURE & AMENITIES



UTILITIES





CLASSIFICATION:

GREEN SPACE

LOCATION:

2555 CARLISLE WAY

NEIGHBOURHOOD:

RIDGEVIEW

PARK SITE

8/12

INFRASTRUCTURE

11/63

NEIGHBOURHOOD CONTEXT

4/15

SAFETY & SECURITY

4/6

ENVIRONMENT

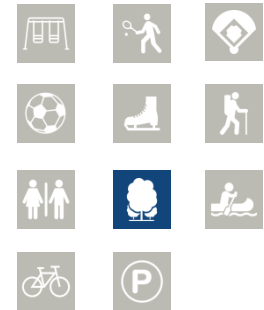
0/6



SUMMARY

- Large, flat green space
- Within a well established neighbourhood

INFRASTRUCTURE & AMENITIES



UTILITIES





CLASSIFICATION: GREEN SPACE
LOCATION: 2715 CHANCELLOR BLVD.
NEIGHBOURHOOD: UNIVERSITY HEIGHTS/CHARELLA

PARK SITE

7/12

INFRASTRUCTURE

6/63

NEIGHBOURHOOD CONTEXT

6/15

SAFETY & SECURITY

4/6

ENVIRONMENT

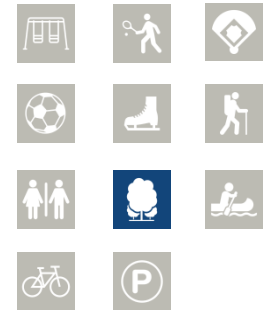
1/6



SUMMARY

- Undeveloped green space
- Newer neighbourhood area with expanding residential areas

INFRASTRUCTURE & AMENITIES



UTILITIES





CLASSIFICATION: NEIGHBOURHOOD
LOCATION: 3034 CHARELLA DRIVE
NEIGHBOURHOOD: UNIVERISTY HEIGHTS/CHARELLA

PARK SITE

7/12

INFRASTRUCTURE

34/63

NEIGHBOURHOOD CONTEXT

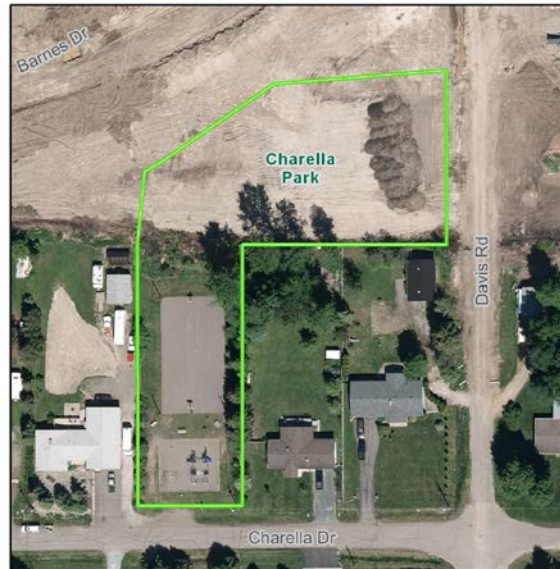
5/15

SAFETY & SECURITY

6/6

ENVIRONMENT

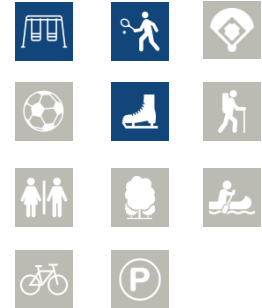
1/6



SUMMARY

- Established Neighbourhood Park with expansion lands
- Newer playground
- Neighbourhood secluded by Ospika Blvd.

INFRASTRUCTURE & AMENITIES



UTILITIES





CLASSIFICATION: NEIGHBOURHOOD
LOCATION: 399 BEECH CRES.
NEIGHBOURHOOD: WESTWOOD

PARK SITE

5/12

INFRASTRUCTURE

20/63

NEIGHBOURHOOD CONTEXT

9/15

SAFETY & SECURITY

6/6

ENVIRONMENT

0/6



SUMMARY

- Newer playground
- Open park surrounded by high density housing

INFRASTRUCTURE & AMENITIES



UTILITIES





CLASSIFICATION: GREEN SPACE
LOCATION: 9788 WESTERN ROAD
NEIGHBOURHOOD: CRANBROOK HILL/BEAVERLY

PARK SITE

9/12

INFRASTRUCTURE

17/63

NEIGHBOURHOOD CONTEXT

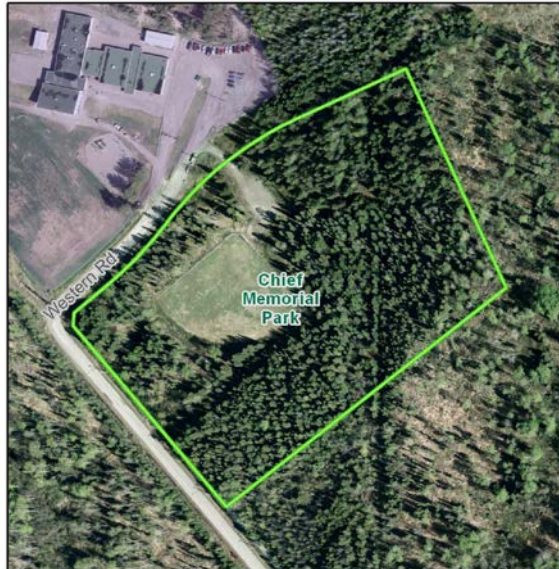
4/15

SAFETY & SECURITY

3/6

ENVIRONMENT

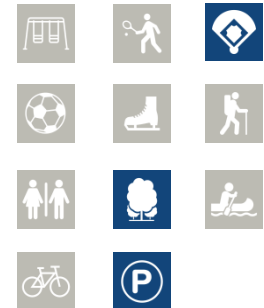
2/6



SUMMARY

- Forested green space with former ball diamond & trail
- Adjacent to Beverly School
- Connected to trail along Western Rd.

INFRASTRUCTURE & AMENITIES



UTILITIES





CLASSIFICATION: GREEN SPACE
LOCATION: 2919 OSPIKA BLVD.
NEIGHBOURHOOD: PINEWOOD/PINECONE

PARK SITE

7/12

INFRASTRUCTURE

11/63

NEIGHBOURHOOD CONTEXT

9/15

SAFETY & SECURITY

5/6

ENVIRONMENT

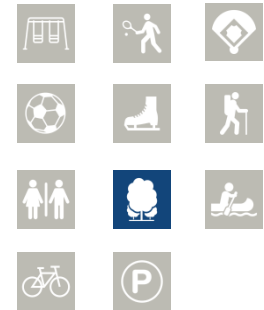
0/6



SUMMARY

- Small undeveloped green space bordering Ospika Blvd.
- Used as a pathway for neighbourhood

INFRASTRUCTURE & AMENITIES



UTILITIES





CLASSIFICATION: NEIGHBOURHOOD

LOCATION: 1501 VAN BIEN

NEIGHBOURHOOD: VAN BIEN

PARK SITE

3/12

INFRASTRUCTURE

25/63

NEIGHBOURHOOD CONTEXT

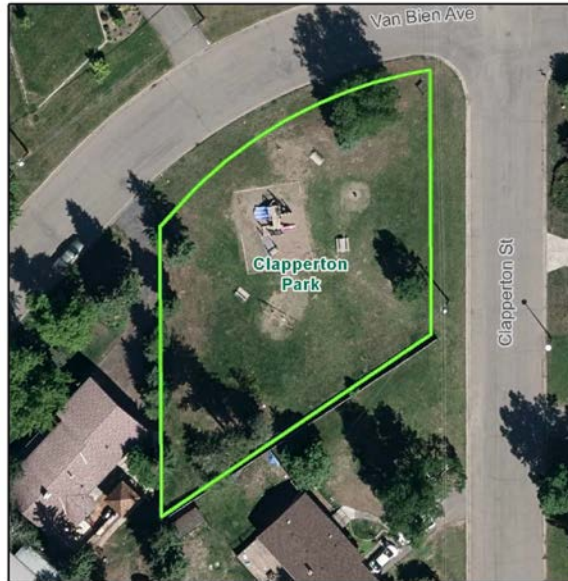
5/15

SAFETY & SECURITY

6/6

ENVIRONMENT

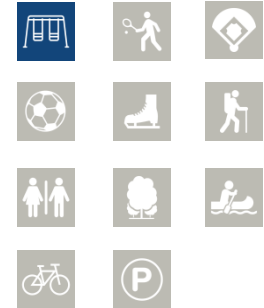
0/6



SUMMARY

- Open park area
- Newer playground

INFRASTRUCTURE & AMENITIES



UTILITIES





CLASSIFICATION: NEIGHBOURHOOD
LOCATION: 9570 CLEARWOOD DRIVE
NEIGHBOURHOOD: ABERDEEN

PARK SITE

7/12

INFRASTRUCTURE

31/63

NEIGHBOURHOOD CONTEXT

8/15

SAFETY & SECURITY

5/6

ENVIRONMENT

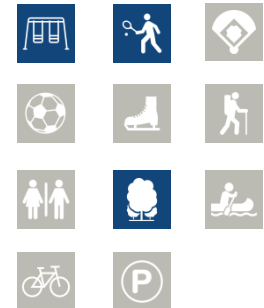
0/6



SUMMARY

- Large Neighbourhood Park with a hard surface court, and newer playground.
- Adjacent green space access
- Only playground in neighbourhood

INFRASTRUCTURE & AMENITIES



UTILITIES





CLASSIFICATION: NEIGHBOURHOOD
LOCATION: 130 CORLESS CRESCENT
NEIGHBOURHOOD: HERITAGE NORTH

PARK SITE

5/12

INFRASTRUCTURE

14/63

NEIGHBOURHOOD CONTEXT

8/15

SAFETY & SECURITY

5/6

ENVIRONMENT

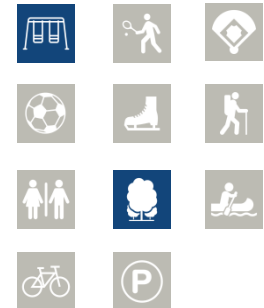
0/6



SUMMARY

- Older playground is on top of a knoll
- Surrounded by high density housing
- Nature access and informal trails

INFRASTRUCTURE & AMENITIES



UTILITIES





CLASSIFICATION: NEIGHBOURHOOD
LOCATION: 2542 COYLE STREET
NEIGHBOURHOOD: PINEWOOD/PINECONE

PARK SITE

6/12

INFRASTRUCTURE

14/63

NEIGHBOURHOOD CONTEXT

12/15

SAFETY & SECURITY

4/6

ENVIRONMENT

0/6



SUMMARY

- Open park with newer playground
- Limited sight lines from road
- Adjacent to high density housing with at tennis court

INFRASTRUCTURE & AMENITIES



UTILITIES





CLASSIFICATION: COMMUNITY
LOCATION: 6877 GLENVIEW
NEIGHBOURHOOD: GLENVIEW

PARK SITE

8/12

INFRASTRUCTURE

37/63

NEIGHBOURHOOD CONTEXT

12/15

SAFETY & SECURITY

6/6

ENVIRONMENT

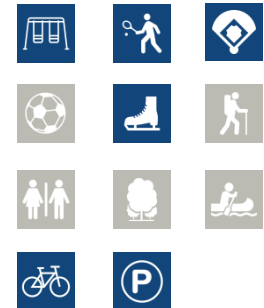
0/6



SUMMARY

- Centrally located Community Park
- Newer playground
- Skate park developed in summer 2016
- Plan for future improvements (dog park, trails, etc.)

INFRASTRUCTURE & AMENITIES



UTILITIES





CLASSIFICATION: GREEN SPACE
LOCATION: 2070 3rd AVENUE
NEIGHBOURHOOD: CRESCENT

PARK SITE

3/12

INFRASTRUCTURE

12/63

NEIGHBOURHOOD CONTEXT

9/15

SAFETY & SECURITY

4/6

ENVIRONMENT

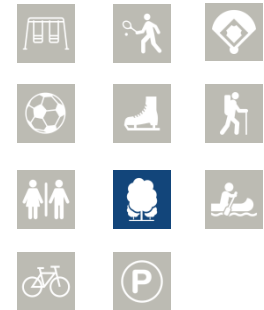
0/6



SUMMARY

- Linear green space with steep embankment
- Informal trail along the roadway

INFRASTRUCTURE & AMENITIES



UTILITIES





CLASSIFICATION: COMMUNITY
LOCATION: 2435 ROSS CRESCENT
NEIGHBOURHOOD: CRESCENTS

PARK SITE

10/12

INFRASTRUCTURE

56/63

NEIGHBOURHOOD CONTEXT

13/15

SAFETY & SECURITY

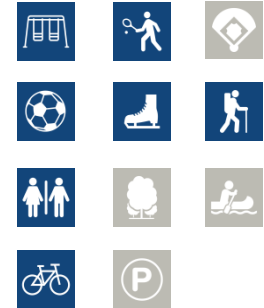
6/6

ENVIRONMENT

0/6



INFRASTRUCTURE & AMENITIES



UTILITIES



SUMMARY

- Prince George's premier Community Park
- New playground, bike track, dog park, soccer field, trails and tennis courts with skating rink in the winter
- Central to the community and adjacent to Duchess Park school.



CLASSIFICATION: NEIGHBOURHOOD
LOCATION: 1253 BOWRON CRESCENT
NEIGHBOURHOOD: FOOTHILLS

PARK SITE

12/12

INFRASTRUCTURE

28/63

NEIGHBOURHOOD CONTEXT

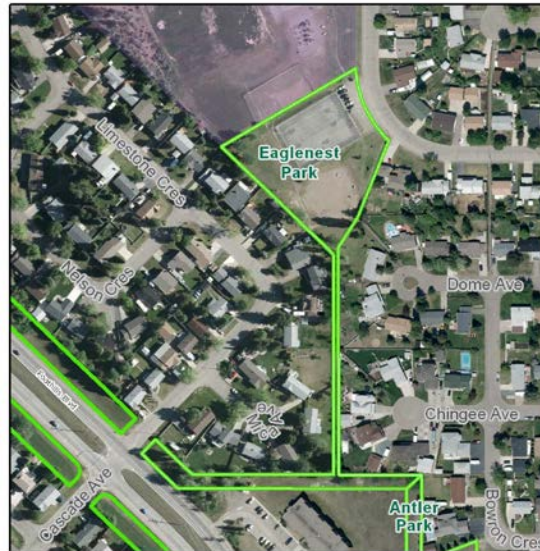
11/15

SAFETY & SECURITY

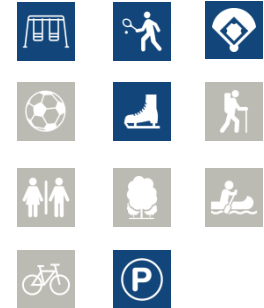
6/6

ENVIRONMENT

0/6



INFRASTRUCTURE & AMENITIES



UTILITIES



SUMMARY

- Central Neighbourhood Park adjacent to Foothills school
- Older playground and tennis courts
- Links to Antler Park and neighbourhood



CLASSIFICATION: NEIGHBOURHOOD
LOCATION: 2599 NORTH NECHAKO ROAD
NEIGHBOURHOOD: EDGEWOOD

PARK SITE

12/12

INFRASTRUCTURE

12/63

NEIGHBOURHOOD CONTEXT

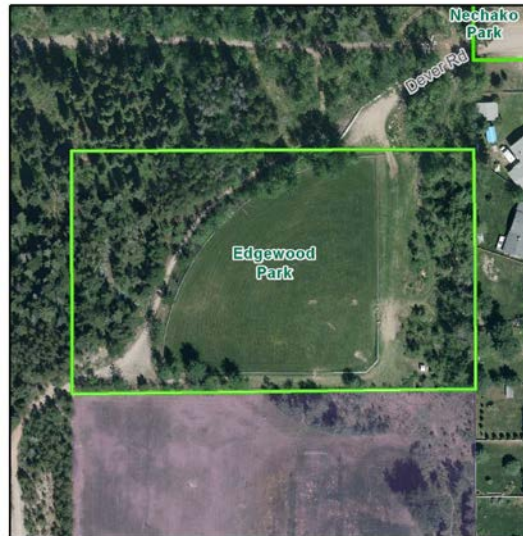
7/15

SAFETY & SECURITY

3/6

ENVIRONMENT

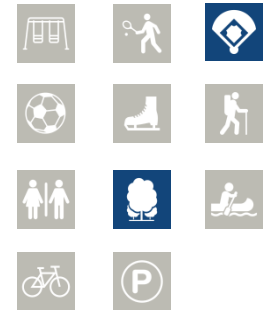
0/6



SUMMARY

- Older ball diamond park adjacent to Edgewood school
- Limited access from the neighbourhood
- Nature access

INFRASTRUCTURE & AMENITIES



UTILITIES





CLASSIFICATION: GREEN SPACE
LOCATION: 1211 OSPIKA BOULEVARD
NEIGHBOURHOOD: HERITAGE NORTH

PARK SITE

3/12

INFRASTRUCTURE

11/63

NEIGHBOURHOOD CONTEXT

8/15

SAFETY & SECURITY

4/6

ENVIRONMENT

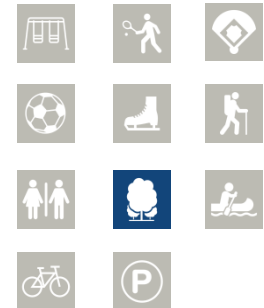
0/6



SUMMARY

- Undeveloped green space across from Wilson Park
- Nature access with walkway connection

INFRASTRUCTURE & AMENITIES



UTILITIES





CLASSIFICATION: NEIGHBOURHOOD
LOCATION: 1211 OSPIKA BOULEVARD
NEIGHBOURHOOD: SEYMOUR

PARK SITE

8/12

INFRASTRUCTURE

23/63

NEIGHBOURHOOD CONTEXT

7/15

SAFETY & SECURITY

5/6

ENVIRONMENT

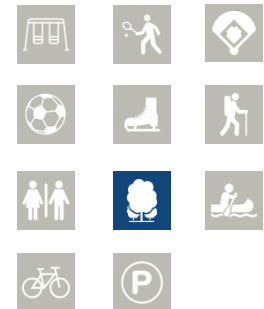
0/6



SUMMARY

- Linear Neighbourhood Park in well established neighbourhood
- Developed floral beds near Garden Drive
- Nature access with informal trail

INFRASTRUCTURE & AMENITIES



UTILITIES





CLASSIFICATION: GREEN SPACE
LOCATION: 6657 ESSEX CRESCENT
NEIGHBOURHOOD: COLLEGE HEIGHTS

PARK SITE

5/12

INFRASTRUCTURE

18/63

NEIGHBOURHOOD CONTEXT

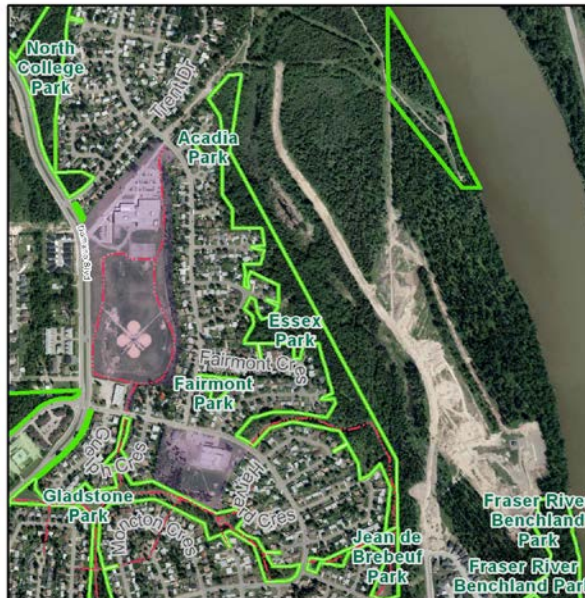
12/15

SAFETY & SECURITY

3/6

ENVIRONMENT

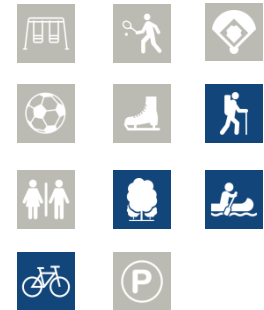
5/6



SUMMARY

- Large linear undeveloped green space
- Steeply sloped area with neighbourhood connections
- Provide linkages to Gladstone trail system and other parks in neighbourhood

INFRASTRUCTURE & AMENITIES



UTILITIES





CLASSIFICATION: NEIGHBOURHOOD
LOCATION: FOOTHILLS BOULEVARD
NEIGHBOURHOOD: EDGEWOOD

PARK SITE

6/12

INFRASTRUCTURE

36/63

NEIGHBOURHOOD CONTEXT

10/15

SAFETY & SECURITY

5/6

ENVIRONMENT

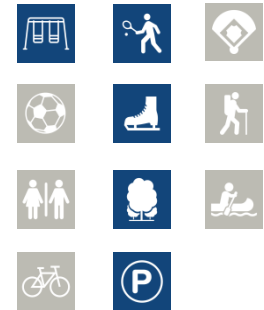
1/6



SUMMARY

- Newer playground with parking and a tennis court that is used as an ice rink in the winter
- Only playground for North Meadows residents
- Neighbourhood secluded by North Nechako Road and Foothills Blvd.

INFRASTRUCTURE & AMENITIES



UTILITIES





CLASSIFICATION: NEIGHBOURHOOD
LOCATION: 6830 SIMON FRASER AVENUE
NEIGHBOURHOOD: COLLEGE HEIGHTS

PARK SITE

5/12

INFRASTRUCTURE

19/63

NEIGHBOURHOOD CONTEXT

7/15

SAFETY & SECURITY

5/6

ENVIRONMENT

0/6



SUMMARY

- Small Neighbourhood Park centrally located.
- Newer playground
- Nature access with connections to the neighbourhood

INFRASTRUCTURE & AMENITIES



UTILITIES





CLASSIFICATION: GREEN SPACE
LOCATION: 8278 FLAMINGO ROAD
NEIGHBOURHOOD: FERGUSON/CHIEF LAKE

PARK SITE

4/12

INFRASTRUCTURE

5/63

NEIGHBOURHOOD CONTEXT

3/15

SAFETY & SECURITY

5/6

ENVIRONMENT

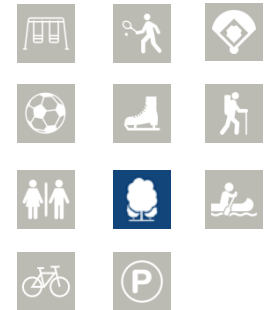
1/6



SUMMARY

- Undeveloped site with nature access
- Low density residential neighbourhood

INFRASTRUCTURE & AMENITIES



UTILITIES





CLASSIFICATION: NEIGHBOURHOOD
LOCATION: 3995 ENEMARK CRESCENT
NEIGHBOURHOOD: PINEWOOD/PINECONE

PARK SITE

6/12

INFRASTRUCTURE

20/63

NEIGHBOURHOOD CONTEXT

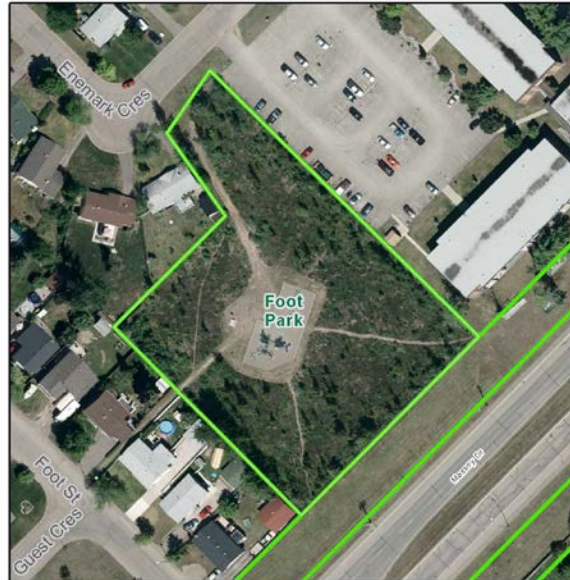
10/15

SAFETY & SECURITY

4/6

ENVIRONMENT

0/6



SUMMARY

- Neighbourhood Park adjacent to high density housing
- Newer playground
- Informal trails with connections to the neighbourhood

INFRASTRUCTURE & AMENITIES



UTILITIES





CLASSIFICATION: GREEN SPACE
LOCATION: FRASER RIVER BENCHLANDS
NEIGHBOURHOOD: MALASPINA

PARK SITE

3/12

INFRASTRUCTURE

6/63

NEIGHBOURHOOD CONTEXT

5/15

SAFETY & SECURITY

4/6

ENVIRONMENT

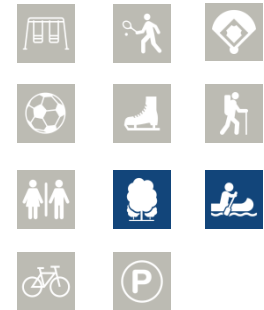
5/6



SUMMARY

- Green Space in a glowing residential neighbourhood
- Only park within the area bounded by an escarpment and river

INFRASTRUCTURE & AMENITIES



UTILITIES





CLASSIFICATION: ATHLETIC
LOCATION: 2825 12th AVENUE
NEIGHBOURHOOD: HARWIN

PARK SITE

9/12

INFRASTRUCTURE

36/63

NEIGHBOURHOOD CONTEXT

12/15

SAFETY & SECURITY

5/6

ENVIRONMENT

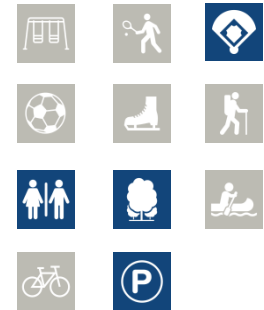
0/6



SUMMARY

- Athletic Park with older ball diamonds and green space
- Ball diamonds used by Ladies Fastball and Minor Girls Softball
- Adjacent to Harwin and St. Mary's Schools
- Centrally located within a high density neighbourhood

INFRASTRUCTURE & AMENITIES



UTILITIES





CLASSIFICATION: NEIGHBOURHOOD
LOCATION: 4702 FREIMULLER AVENUE
NEIGHBOURHOOD: HERITAGE SOUTH

PARK SITE

5/12

INFRASTRUCTURE

12/63

NEIGHBOURHOOD CONTEXT

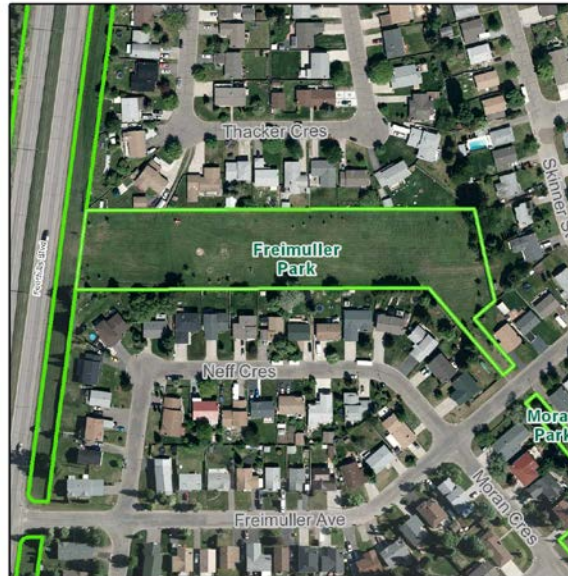
8/15

SAFETY & SECURITY

5/6

ENVIRONMENT

0/6



SUMMARY

- Open Neighbourhood Park
- Older playground
- Centrally located with limited sight lines

INFRASTRUCTURE & AMENITIES



UTILITIES





CLASSIFICATION: NEIGHBOURHOOD
LOCATION: 7066 GUELPH CRESCENT
NEIGHBOURHOOD: MALASPINA

PARK SITE

11/12

INFRASTRUCTURE

25/63

NEIGHBOURHOOD CONTEXT

13/15

SAFETY & SECURITY

5/6

ENVIRONMENT

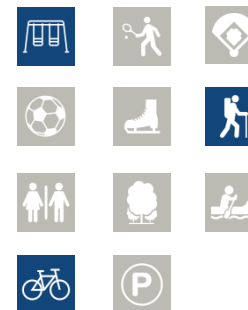
0/6



SUMMARY

- Developed linear park with multi use trails throughout (Gladstone Trail system)
- Trails link the neighbourhood and parks
- Providing green space and natural areas throughout
- Adjacent to Polaris School

INFRASTRUCTURE & AMENITIES



UTILITIES





CLASSIFICATION: GREEN SPACE
LOCATION: 7706 SOUTHRIDGE AVENUE
NEIGHBOURHOOD: SOUTHRIDGE

PARK SITE

8/12

INFRASTRUCTURE

4/63

NEIGHBOURHOOD CONTEXT

6/15

SAFETY & SECURITY

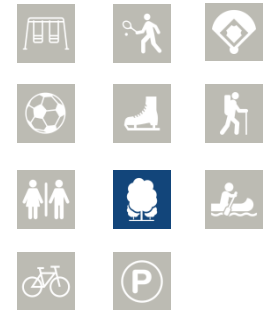
5/6

ENVIRONMENT

0/6



INFRASTRUCTURE & AMENITIES



UTILITIES



SUMMARY

- Undeveloped green space
- Neighbourhood expanding with residential growth



CLASSIFICATION: NEIGHBOURHOOD
LOCATION: 4090 1st AVENUE
NEIGHBOURHOOD: HIGHLAND/HIGHGLEN

PARK SITE

9/12

INFRASTRUCTURE

28/63

NEIGHBOURHOOD CONTEXT

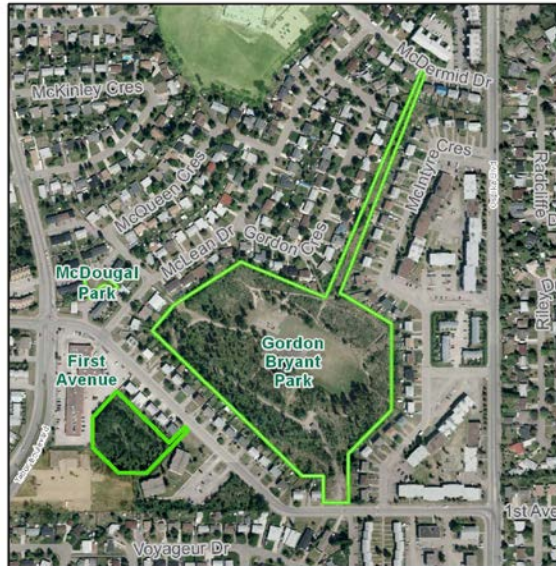
10/15

SAFETY & SECURITY

3/6

ENVIRONMENT

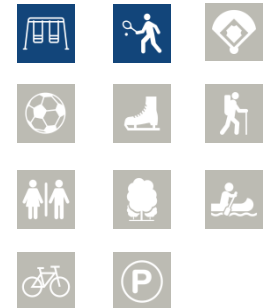
0/6



SUMMARY

- Centrally located Neighbourhood Park
- Newer playground and older basketball court
- Large bowl shaped area with nature access and informal trails

INFRASTRUCTURE & AMENITIES



UTILITIES





CLASSIFICATION: GREEN SPACE
LOCATION: 9333 HALDI ROAD
NEIGHBOURHOOD: HALDI

PARK SITE

5/12

INFRASTRUCTURE

6/63

NEIGHBOURHOOD CONTEXT

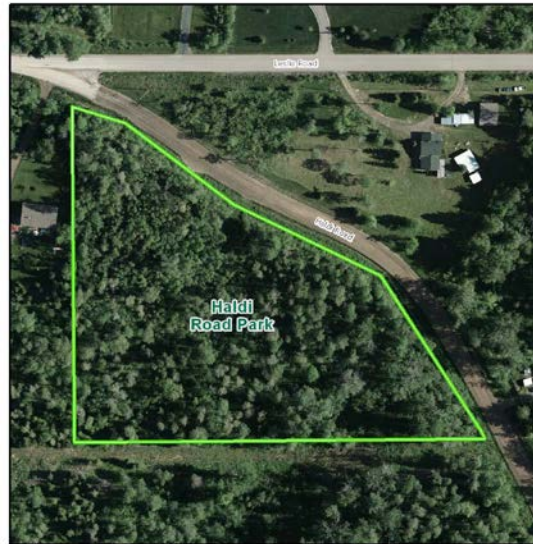
1/15

SAFETY & SECURITY

3/6

ENVIRONMENT

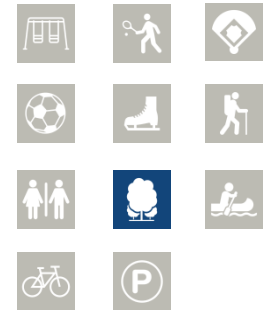
1/6



SUMMARY

- Undeveloped green space
- Rural neighbourhood with lower density

INFRASTRUCTURE & AMENITIES



UTILITIES





CLASSIFICATION: NEIGHBOURHOOD
LOCATION: 2848 HAMMOND AVENUE
NEIGHBOURHOOD: CENTRAL FORT GEORGE

PARK SITE

4/12

INFRASTRUCTURE

29/63

NEIGHBOURHOOD CONTEXT

6/15

SAFETY & SECURITY

6/6

ENVIRONMENT

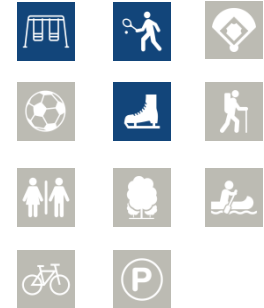
0/6



SUMMARY

- Only Neighbourhood Park within the area
- Hard surface court used as an ice rink in the winter
- Older playground

INFRASTRUCTURE & AMENITIES



UTILITIES





CLASSIFICATION: NEIGHBOURHOOD

LOCATION: 650 IRWIN

NEIGHBOURHOOD: HARWIN

PARK SITE

7/12

INFRASTRUCTURE

32/63

NEIGHBOURHOOD CONTEXT

8/15

SAFETY & SECURITY

6/6

ENVIRONMENT

0/6



SUMMARY

- Centrally located Neighbourhood Park
- Older playground
- Only Neighbourhood Park in a high density area

INFRASTRUCTURE & AMENITIES



UTILITIES





CLASSIFICATION: NEIGHBOURHOOD
LOCATION: 3655 RAINBOW DRIVE
NEIGHBOURHOOD: SPRUCELAND

PARK SITE

9/12

INFRASTRUCTURE

42/63

NEIGHBOURHOOD CONTEXT

12/15

SAFETY & SECURITY

5/6

ENVIRONMENT

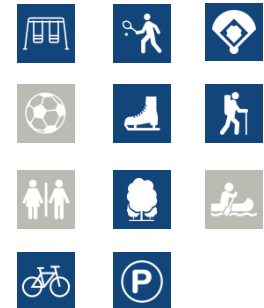
0/6



SUMMARY

- Central Neighbourhood Park
- Older playground and hard surface court used as an ice rink in the winter
- Ball diamond used by PG Youth Baseball

INFRASTRUCTURE & AMENITIES



UTILITIES





CLASSIFICATION: COMMUNITY
LOCATION: 4833 HEATHER ROAD PARK
NEIGHBOURHOOD: HEATHER ROAD

PARK SITE

7/12

INFRASTRUCTURE

37/63

NEIGHBOURHOOD CONTEXT

7/15

SAFETY & SECURITY

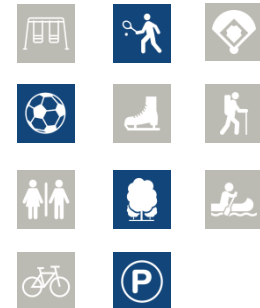
4/6

ENVIRONMENT

0/6



INFRASTRUCTURE & AMENITIES



UTILITIES



SUMMARY

- Community Park with ice arena and recreation amenities
- Ball diamonds decommissioned in 2016
- Soccer field and basketball court north of Heather Road
- Adjacent to Volunteer Park and Heather Park School
- Connected to the neighbourhood with informal trails



CLASSIFICATION: GREEN SPACE
LOCATION: 3660 AVENUE
NEIGHBOURHOOD: PINEWOOD/PINECONE

PARK SITE

6/12

INFRASTRUCTURE

7/63

NEIGHBOURHOOD CONTEXT

9/15

SAFETY & SECURITY

4/6

ENVIRONMENT

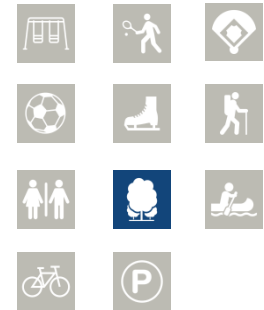
0/6



SUMMARY

- Undeveloped green space
- Very limited street frontage
- Connected to neighbourhood

INFRASTRUCTURE & AMENITIES



UTILITIES





CLASSIFICATION: NEIGHBOURHOOD
LOCATION: 4382 5th AVENUE
NEIGHBOURHOOD: HERITAGE SOUTH

PARK SITE

5/12

INFRASTRUCTURE

12/63

NEIGHBOURHOOD CONTEXT

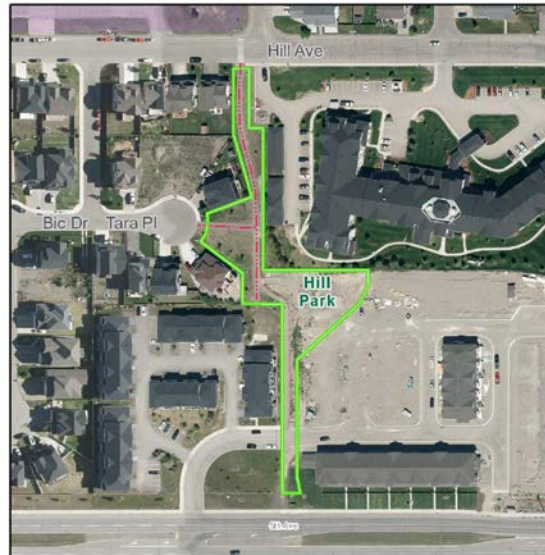
11/15

SAFETY & SECURITY

5/6

ENVIRONMENT

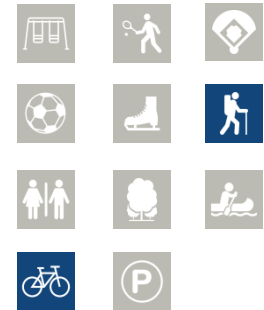
0/6



SUMMARY

- Small linear park
- Multi use trail connects the neighbourhood

INFRASTRUCTURE & AMENITIES



UTILITIES





CLASSIFICATION: NEIGHBOURHOOD
LOCATION: 1627 HEMLOCK STREET
NEIGHBOURHOOD: MILLAR ADDITION

PARK SITE

4/12

INFRASTRUCTURE

20/63

NEIGHBOURHOOD CONTEXT

9/15

SAFETY & SECURITY

6/6

ENVIRONMENT

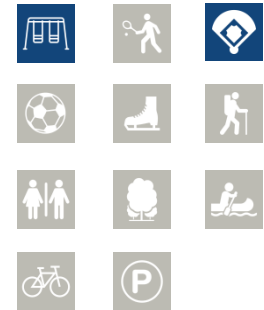
0/6



SUMMARY

- Central Neighbourhood Park in a well established neighbourhood
- Older playground
- Close to City's premier Lheidli T'enneh Memorial Park

INFRASTRUCTURE & AMENITIES



UTILITIES





CLASSIFICATION: NEIGHBOURHOOD
LOCATION: 4343 JACKPINE AVENUE
NEIGHBOURHOOD: FOOTHILLS

PARK SITE

5/12

INFRASTRUCTURE

11/63

NEIGHBOURHOOD CONTEXT

9/15

SAFETY & SECURITY

6/6

ENVIRONMENT

0/6



INFRASTRUCTURE & AMENITIES



UTILITIES



SUMMARY

- Open Neighbourhood Park near high density residential area
- Older playground
- Connected to neighbourhood



CLASSIFICATION: NEIGHBOURHOOD
LOCATION: 2506 MOSS AVENUE
NEIGHBOURHOOD: SOUTH FORT GEORGE

PARK SITE

8/12

INFRASTRUCTURE

19/63

NEIGHBOURHOOD CONTEXT

11/15

SAFETY & SECURITY

5/6

ENVIRONMENT

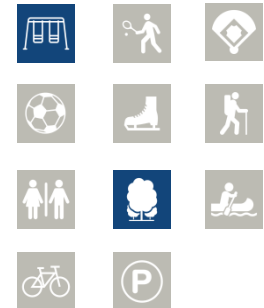
0/6



SUMMARY

- Neighbourhood Park with nature access
- Older playground
- Adjacent to South Fort George Family Resource Centre

INFRASTRUCTURE & AMENITIES



UTILITIES





CLASSIFICATION: NEIGHBOURHOOD
LOCATION: 7588 JEAN DE BREBEUF CRESCENT
NEIGHBOURHOOD: MALASPINA

PARK SITE

5/12

INFRASTRUCTURE

30/63

NEIGHBOURHOOD CONTEXT

13/15

SAFETY & SECURITY

5/6

ENVIRONMENT

0/6



SUMMARY

- Neighbourhood Park with multi use trail connected to neighbourhood and other parks
- Newer playground
- Nature access

INFRASTRUCTURE & AMENITIES



UTILITIES





CLASSIFICATION: NEIGHBOURHOOD
LOCATION: 402 KELLY STREET
NEIGHBOURHOOD: QUINSON

PARK SITE

3/12

INFRASTRUCTURE

10/63

NEIGHBOURHOOD CONTEXT

8/15

SAFETY & SECURITY

6/6

ENVIRONMENT

0/6



SUMMARY

- Very small park located along the edge of the neighbourhood
- Older playground
- Adjacent to Highway 97

INFRASTRUCTURE & AMENITIES



UTILITIES





CLASSIFICATION: GREEN SPACE
LOCATION: 7549 JEAN DU BREBEUF CRESCENT
NEIGHBOURHOOD: MALASPINA

PARK SITE

5/12

INFRASTRUCTURE

8/63

NEIGHBOURHOOD CONTEXT

7/15

SAFETY & SECURITY

5/6

ENVIRONMENT

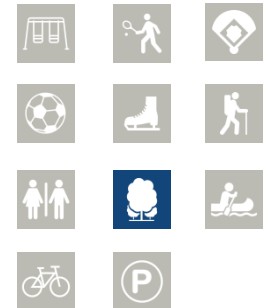
0/6



SUMMARY

- Undeveloped green space
- Near other developed parks

INFRASTRUCTURE & AMENITIES



UTILITIES





CLASSIFICATION: GREEN SPACE
LOCATION: 4055 5th AVENUE
NEIGHBOURHOOD: LAKEWOOD

PARK SITE

3/12

INFRASTRUCTURE

11/63

NEIGHBOURHOOD CONTEXT

10/15

SAFETY & SECURITY

4/6

ENVIRONMENT

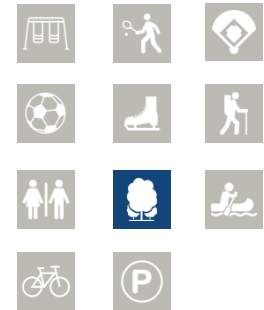
0/6



SUMMARY

- Large undeveloped green space
- Informal trails with undulating slopes and nature access

INFRASTRUCTURE & AMENITIES



UTILITIES





CLASSIFICATION: NEIGHBOURHOOD
LOCATION: 7818 LATROBE CRESCENT
NEIGHBOURHOOD: MALASPINA

PARK SITE

3/12

INFRASTRUCTURE

19/63

NEIGHBOURHOOD CONTEXT

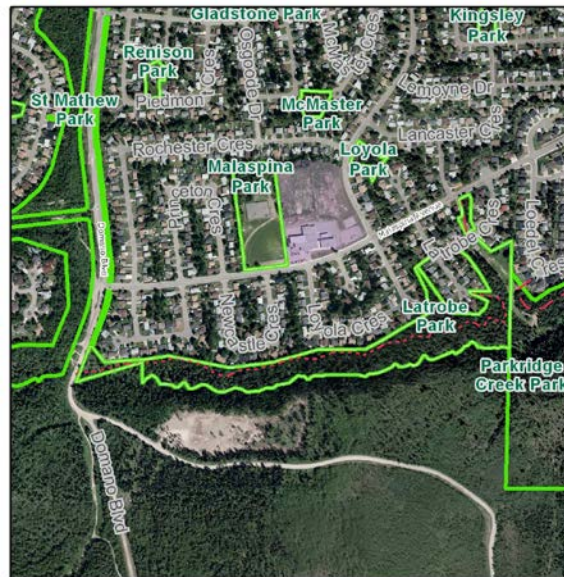
10/15

SAFETY & SECURITY

4/6

ENVIRONMENT

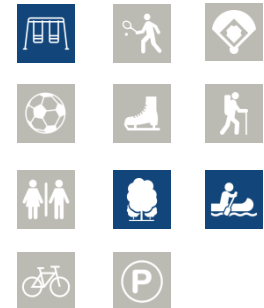
4/6



SUMMARY

- Neighbourhood Park with two sections divided by the road
- Newer playground
- Nature access and Parkridge Creek to the south

INFRASTRUCTURE & AMENITIES



UTILITIES





CLASSIFICATION: NEIGHBOURHOOD
LOCATION: 2430 VANIER DRIVE
NEIGHBOURHOOD: WESTWOOD

PARK SITE

8/12

INFRASTRUCTURE

22/63

NEIGHBOURHOOD CONTEXT

9/15

SAFETY & SECURITY

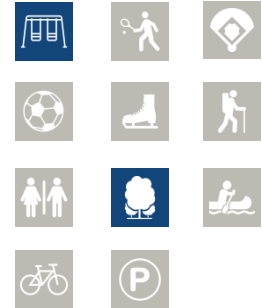
3/6

ENVIRONMENT

0/6



INFRASTRUCTURE & AMENITIES



UTILITIES



SUMMARY

- Neighbourhood park with limited sight lines
- Older playground
- Connected to neighbourhood with informal trails and walkways to the south
- Nature access and steep slopes



CLASSIFICATION: GREEN SPACE
LOCATION: 7878 LOYOLA DRIVE
NEIGHBOURHOOD: MALASPINA

PARK SITE

5/12

INFRASTRUCTURE

10/63

NEIGHBOURHOOD CONTEXT

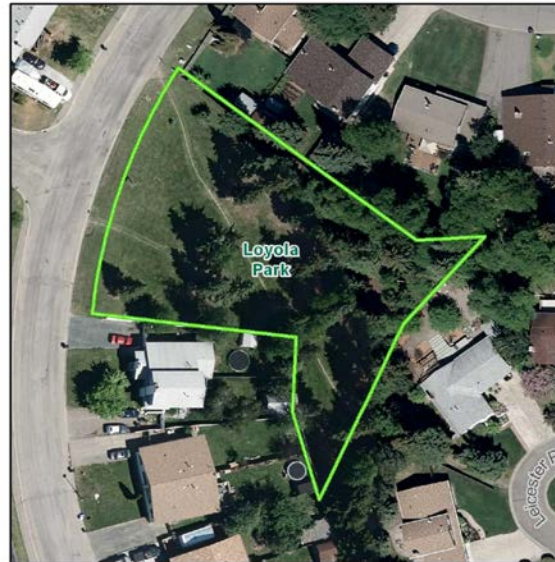
8/15

SAFETY & SECURITY

5/6

ENVIRONMENT

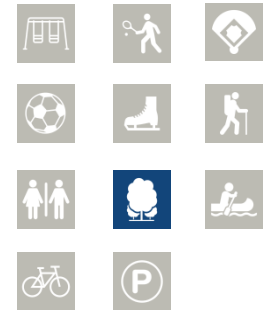
0/6



SUMMARY

- Small green space with a small green lawn area
- Nature access with connections to the neighbourhood

INFRASTRUCTURE & AMENITIES



UTILITIES





CLASSIFICATION: NEIGHBOURHOOD
LOCATION: 8008 MALASPINA AVENUE
NEIGHBOURHOOD: MALASPINA

PARK SITE

11/12

INFRASTRUCTURE

36/63

NEIGHBOURHOOD CONTEXT

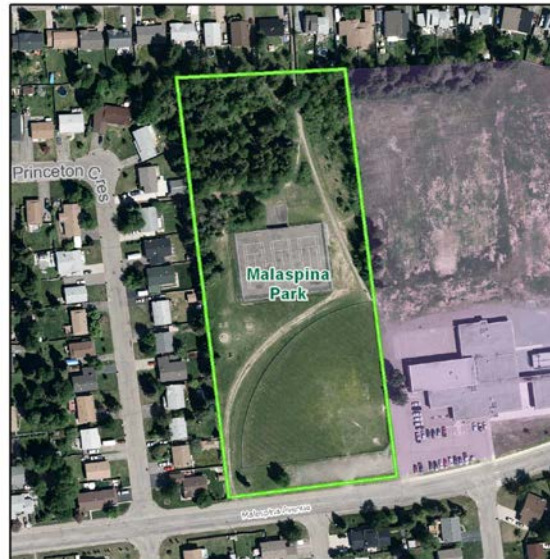
11/15

SAFETY & SECURITY

5/6

ENVIRONMENT

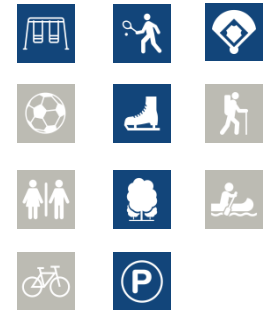
0/6



SUMMARY

- Large Neighbourhood Park adjacent to Malaspina School
- Older ball diamond, playground, parking lot and tennis court used as an ice rink in the winter
- Connections to the neighbourhood

INFRASTRUCTURE & AMENITIES



UTILITIES





CLASSIFICATION: GREEN SPACE
LOCATION: 171 MCDERMID DRIVE
NEIGHBOURHOOD: HIGHLAND/HIGHGLEN

PARK SITE

5/12

INFRASTRUCTURE

8/63

NEIGHBOURHOOD CONTEXT

9/15

SAFETY & SECURITY

3/6

ENVIRONMENT

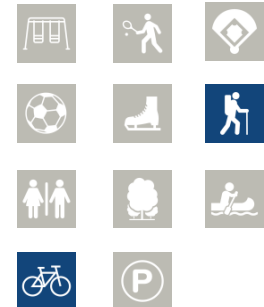
0/6



SUMMARY

- Small open space with limited sight lines
- Multi use trail through the park with connections to the neighbourhood

INFRASTRUCTURE & AMENITIES



UTILITIES





CLASSIFICATION: GREEN SPACE
LOCATION: 115 MCDUGAL PLACE
NEIGHBOURHOOD: HIGHLAND/HIGHGLEN

PARK SITE

5/12

INFRASTRUCTURE

8/63

NEIGHBOURHOOD CONTEXT

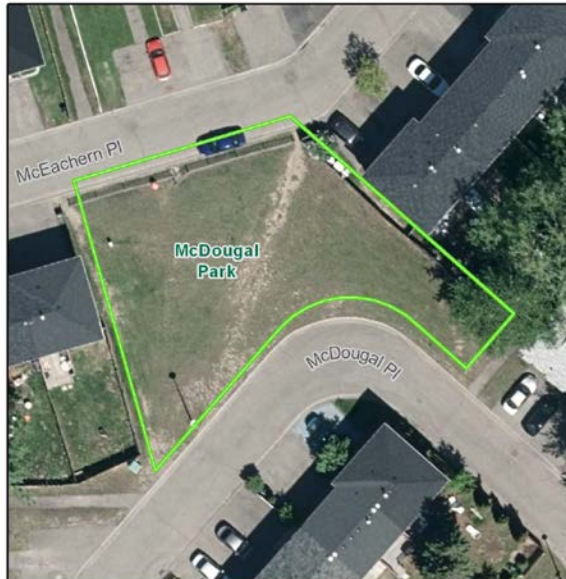
8/15

SAFETY & SECURITY

6/6

ENVIRONMENT

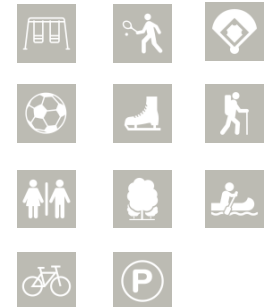
0/6



SUMMARY

- Small open grass area
- Multi family and high density housing in area
- No facilities

INFRASTRUCTURE & AMENITIES



UTILITIES





CLASSIFICATION: NEIGHBOURHOOD
LOCATION: 7780 NEWTON CRESCENT
NEIGHBOURHOOD: MALASPINA

PARK SITE

7/12

INFRASTRUCTURE

18/63

NEIGHBOURHOOD CONTEXT

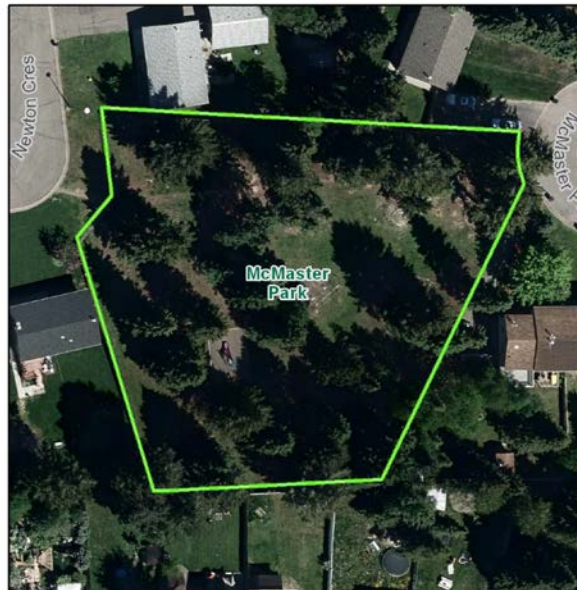
7/15

SAFETY & SECURITY

6/6

ENVIRONMENT

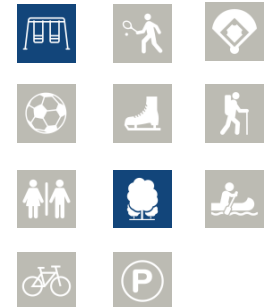
0/6



SUMMARY

- Neighbourhood Park with forested area
- Older playground
- Near other Neighbourhood Parks

INFRASTRUCTURE & AMENITIES



UTILITIES





CLASSIFICATION: GREEN SPACE
LOCATION: 1555 MILBURN AVE.
NEIGHBOURHOOD: VLA

PARK SITE

6/12

INFRASTRUCTURE

16/63

NEIGHBOURHOOD CONTEXT

14/15

SAFETY & SECURITY

2/6

ENVIRONMENT

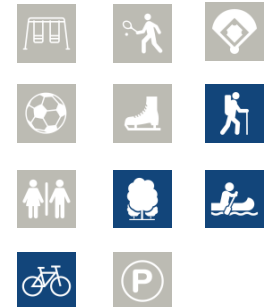
5/6



SUMMARY

- Large lawn with a natural area
- Adjacent to Hudson Bay Slough and Strathcona Park
- Multi use trail is part of the Heritage River Trail System

INFRASTRUCTURE & AMENITIES



UTILITIES





CLASSIFICATION: NEIGHBOURHOOD
LOCATION: 2447 ABBOTT CRESCENT
NEIGHBOURHOOD: VLA

PARK SITE

4/12

INFRASTRUCTURE

19/63

NEIGHBOURHOOD CONTEXT

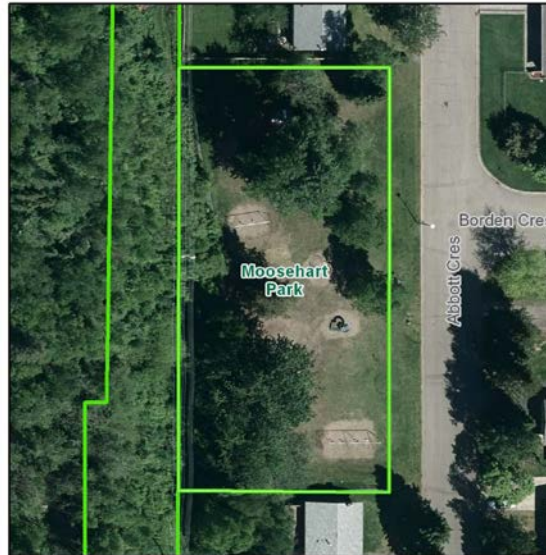
9/15

SAFETY & SECURITY

6/6

ENVIRONMENT

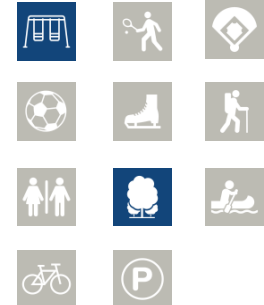
2/6



SUMMARY

- Neighbourhood Park in well established neighbourhood
- Older playground equipment
- Adjacent to green space area

INFRASTRUCTURE & AMENITIES



UTILITIES





CLASSIFICATION: NEIGHBOURHOOD
LOCATION: 216 MORAN CRESCENT
NEIGHBOURHOOD: HERITAGE SOUTH

PARK SITE

12/12

INFRASTRUCTURE

9/63

NEIGHBOURHOOD CONTEXT

11/15

SAFETY & SECURITY

5/6

ENVIRONMENT

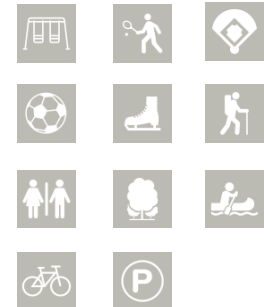
0/6



SUMMARY

- Large open grass area
- Central to neighbourhood
- Adjacent to Heritage School
- No facilities
- Near Friemuller and Moore's Meadow Park

INFRASTRUCTURE & AMENITIES



UTILITIES





CLASSIFICATION: GREEN SPACE
LOCATION: 6697 MORIARTY CRESCENT
NEIGHBOURHOOD: COLLEGE HEIGHTS

PARK SITE

7/12

INFRASTRUCTURE

11/63

NEIGHBOURHOOD CONTEXT

8/15

SAFETY & SECURITY

4/6

ENVIRONMENT

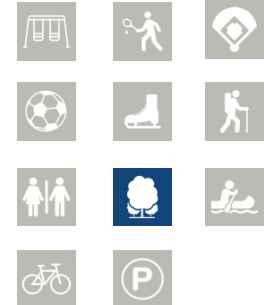
0/6



SUMMARY

- Undeveloped green space
- Informal trail system
- Close to North College Park

INFRASTRUCTURE & AMENITIES



UTILITIES





CLASSIFICATION: NEIGHBOURHOOD
LOCATION: 4044 NORDIC DRIVE
NEIGHBOURHOOD: NORDIC

PARK SITE

7/12

INFRASTRUCTURE

23/63

NEIGHBOURHOOD CONTEXT

4/15

SAFETY & SECURITY

5/6

ENVIRONMENT

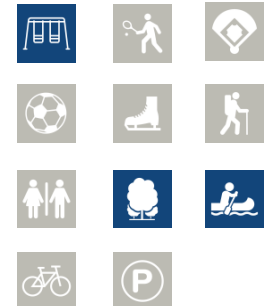
4/6



SUMMARY

- Neighbourhood park in well established area
- Newer playground
- Nature access

INFRASTRUCTURE & AMENITIES



UTILITIES





CLASSIFICATION: NEIGHBOURHOOD
LOCATION: 5355 ETON AVENUE
NEIGHBOURHOOD: COLLEGE HEIGHTS

PARK SITE

6/12

INFRASTRUCTURE

42/63

NEIGHBOURHOOD CONTEXT

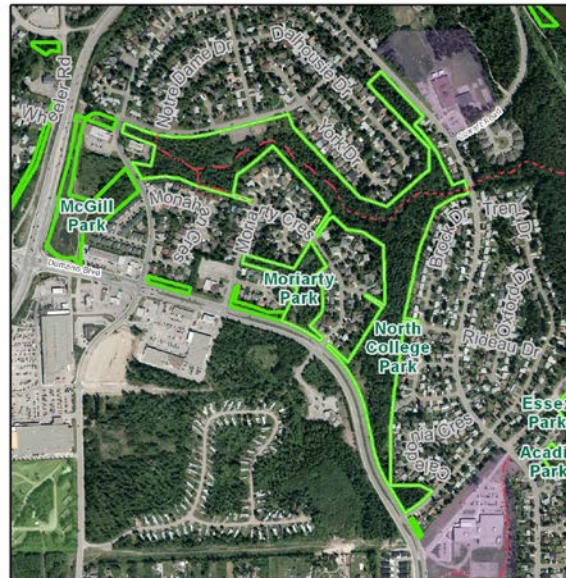
12/15

SAFETY & SECURITY

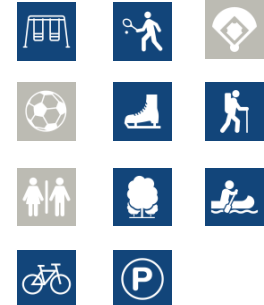
4/6

ENVIRONMENT

4/6



INFRASTRUCTURE & AMENITIES



UTILITIES



SUMMARY

- Large Neighbourhood Park with multiple amenities
- Large natural area with rustic trail along creek
- Older playground from the 80's and tennis courts used as an ice rink in the winter
- Well connected to the neighbourhood



CLASSIFICATION: GREEN SPACE
LOCATION: 9337 NORTH NECHAKO ROAD
NEIGHBOURHOOD: NORTH NECHAKO

PARK SITE

3/12

INFRASTRUCTURE

8/63

NEIGHBOURHOOD CONTEXT

1/15

SAFETY & SECURITY

5/6

ENVIRONMENT

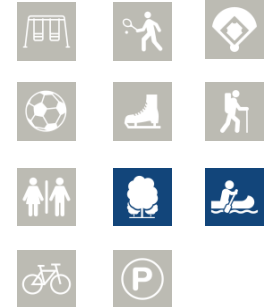
3/6



SUMMARY

- Large undeveloped green space at the end of North Nechako Road
- Surrounded by a few large residential lots
- Borders the Nechako River

INFRASTRUCTURE & AMENITIES



UTILITIES





CLASSIFICATION: GREEN SPACE
LOCATION: 7754 OPAL DRIVE
NEIGHBOURHOOD: NORDIC

PARK SITE

6/12

INFRASTRUCTURE

11/63

NEIGHBOURHOOD CONTEXT

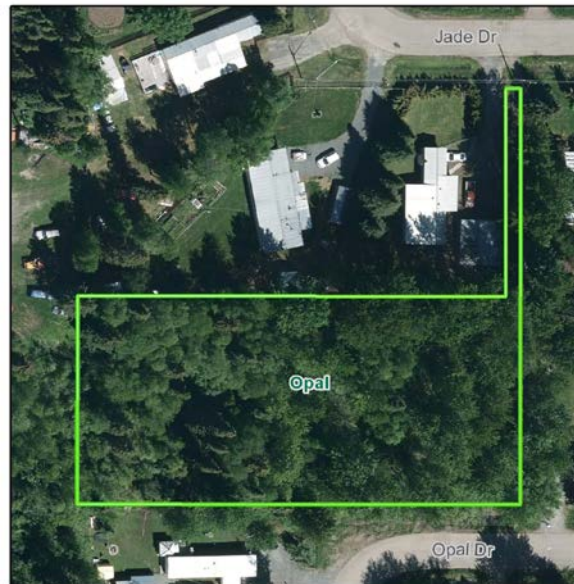
6/15

SAFETY & SECURITY

4/6

ENVIRONMENT

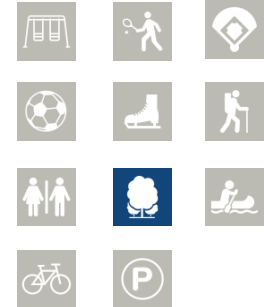
0/6



SUMMARY

- Undeveloped green space
- Informal trail connection

INFRASTRUCTURE & AMENITIES



UTILITIES





CLASSIFICATION: NEIGHBOURHOOD
LOCATION: 2466 REGENTS CRESCENT
NEIGHBOURHOOD: SOUTH FORT GEORGE

PARK SITE

7/12

INFRASTRUCTURE

27/63

NEIGHBOURHOOD CONTEXT

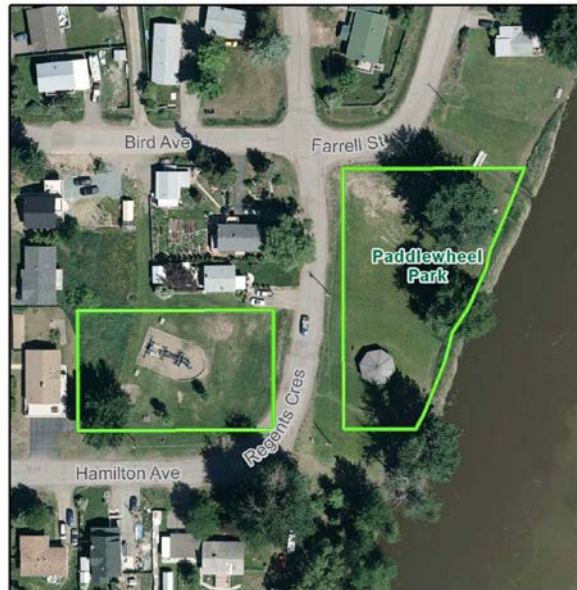
6/15

SAFETY & SECURITY

3/6

ENVIRONMENT

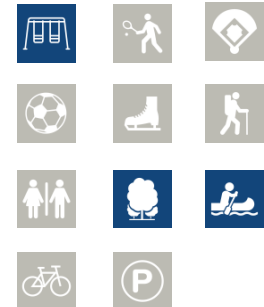
3/6



SUMMARY

- Neighbourhood Park with newer playground
- Park borders Fraser River
- Park has gazebo booked and used for wedding pictures and other events
- Park is flooded annually

INFRASTRUCTURE & AMENITIES



UTILITIES





CLASSIFICATION: GREEN SPACE
LOCATION: 7736 DOW ROAD
NEIGHBOURHOOD: PARKRIDGE HEIGHTS

PARK SITE

4/12

INFRASTRUCTURE

24/63

NEIGHBOURHOOD CONTEXT

7/15

SAFETY & SECURITY

6/6

ENVIRONMENT

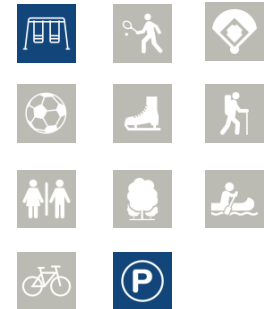
0/6



SUMMARY

- Neighbourhood Park with newer playground
- Open area within a well established neighbourhood

INFRASTRUCTURE & AMENITIES



UTILITIES





CLASSIFICATION: NEIGHBOURHOOD
LOCATION: 299 WILSON CRESCENT
NEIGHBOURHOOD: VAN BIEN

PARK SITE

11/12

INFRASTRUCTURE

19/63

NEIGHBOURHOOD CONTEXT

12/15

SAFETY & SECURITY

5/6

ENVIRONMENT

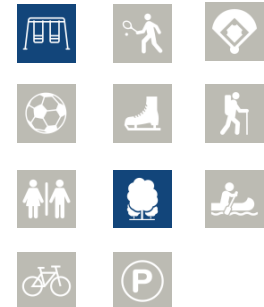
0/6



SUMMARY

- Neighbourhood Park adjacent to Van Bien School
- Older playground equipment
- Adjacent Van Bien tennis courts is used as an ice rink in the winter
- Nature access

INFRASTRUCTURE & AMENITIES



UTILITIES





CLASSIFICATION: GREEN SPACE
LOCATION: 3640 FOREST AVENUE
NEIGHBOURHOOD: PINEWOOD/PINECONE

PARK SITE

7/12

INFRASTRUCTURE

7/63

NEIGHBOURHOOD CONTEXT

10/15

SAFETY & SECURITY

4/6

ENVIRONMENT

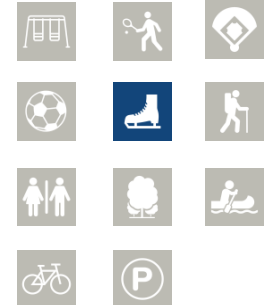
0/6



SUMMARY

- Undeveloped Neighbourhood Park behind a church
- Community volunteers run an ice rink at this location in the winter.
- Connected to the neighbourhood with walkways

INFRASTRUCTURE & AMENITIES



UTILITIES





CLASSIFICATION: NEIGHBOURHOOD
LOCATION: 3117 POYNER CRESCENT
NEIGHBOURHOOD: HART HIGHLANDS

PARK SITE

6/12

INFRASTRUCTURE

19/63

NEIGHBOURHOOD CONTEXT

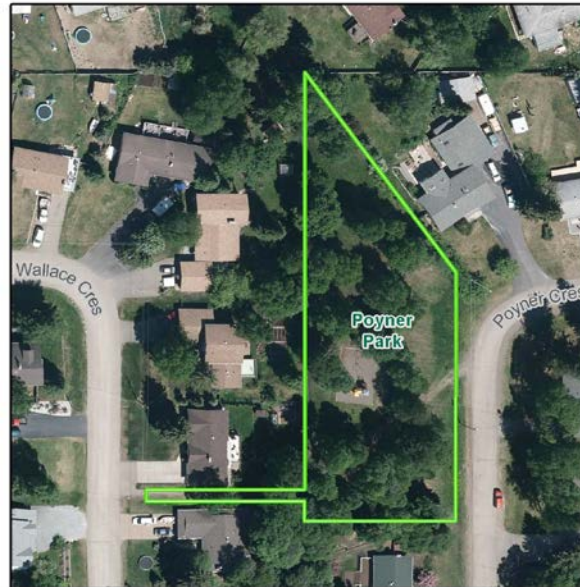
7/15

SAFETY & SECURITY

4/6

ENVIRONMENT

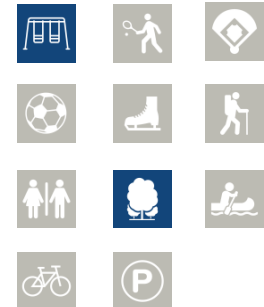
0/6



SUMMARY

- Small Neighbourhood Park with nature access
- Newer playground
- Only playground within a well established neighbourhood

INFRASTRUCTURE & AMENITIES



UTILITIES





CLASSIFICATION: NEIGHBOURHOOD
LOCATION: 4132 PRUDENTE ROAD
NEIGHBOURHOOD: UPPER PEDEN HILL

PARK SITE

7/12

INFRASTRUCTURE

24/63

NEIGHBOURHOOD CONTEXT

10/15

SAFETY & SECURITY

6/6

ENVIRONMENT

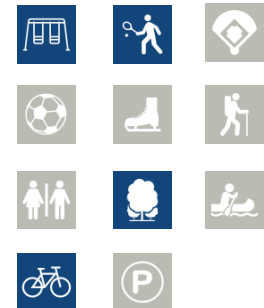
4/6



SUMMARY

- Neighbourhood Park with nature access and amenities
- Newer playground with older hard surface court
- Adjacent to Starlane Park

INFRASTRUCTURE & AMENITIES



UTILITIES





CLASSIFICATION: NEIGHBOURHOOD
LOCATION: 4270 PUNCHAW CRESCENT
NEIGHBOURHOOD: LAKEWOOD

PARK SITE

4/12

INFRASTRUCTURE

12/63

NEIGHBOURHOOD CONTEXT

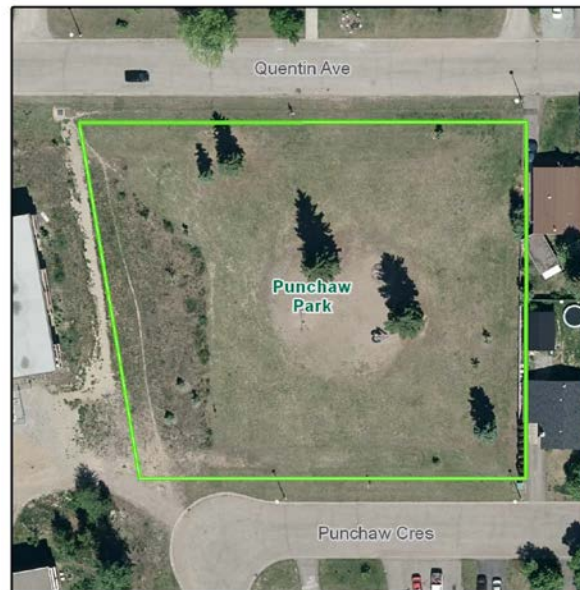
8/15

SAFETY & SECURITY

6/6

ENVIRONMENT

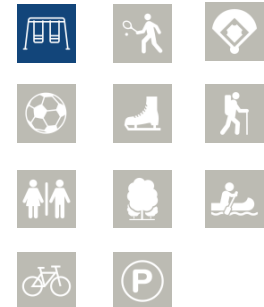
0/6



SUMMARY

- Open Neighbourhood Park within a high density residential area
- Older playground equipment
- Close to Jackpine Park

INFRASTRUCTURE & AMENITIES



UTILITIES





CLASSIFICATION: NEIGHBOURHOOD
LOCATION: 570 QUINN STRETT
NEIGHBOURHOOD: QUINSON

PARK SITE

7/12

INFRASTRUCTURE

18/63

NEIGHBOURHOOD CONTEXT

6/15

SAFETY & SECURITY

6/6

ENVIRONMENT

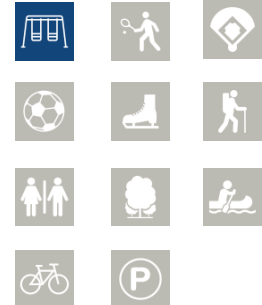
0/6



SUMMARY

- Neighbourhood Park within a well established neighbourhood
- Older playground equipment
- One of the only parks in a high density area

INFRASTRUCTURE & AMENITIES



UTILITIES





CLASSIFICATION: NEIGHBOURHOOD
LOCATION: 7824 PIEDMONT CRESCENT
NEIGHBOURHOOD: MALASPINA

PARK SITE

6/12

INFRASTRUCTURE

21/63

NEIGHBOURHOOD CONTEXT

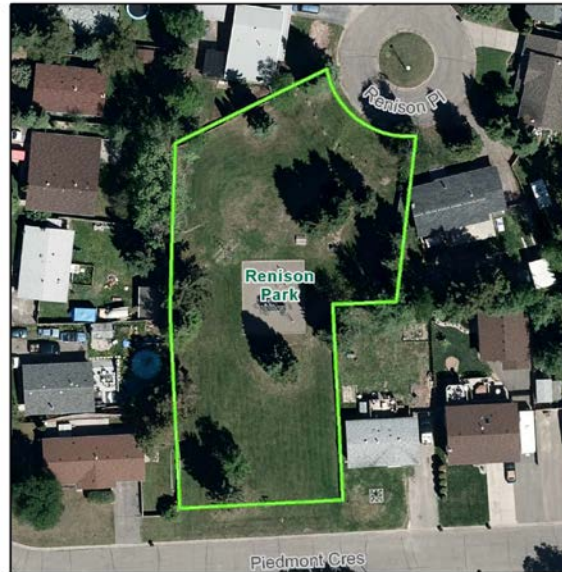
7/15

SAFETY & SECURITY

5/6

ENVIRONMENT

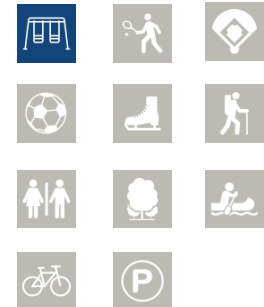
0/6



SUMMARY

- Neighbourhood Park with open area
- Newer playground equipment
- Close to other Neighbourhood Parks

INFRASTRUCTURE & AMENITIES



UTILITIES





CLASSIFICATION: NEIGHBOURHOOD
LOCATION: 2992 RIDGEVIEW DRIVE
NEIGHBOURHOOD: RIDGEVIEW

PARK SITE

6/12

INFRASTRUCTURE

32/63

NEIGHBOURHOOD CONTEXT

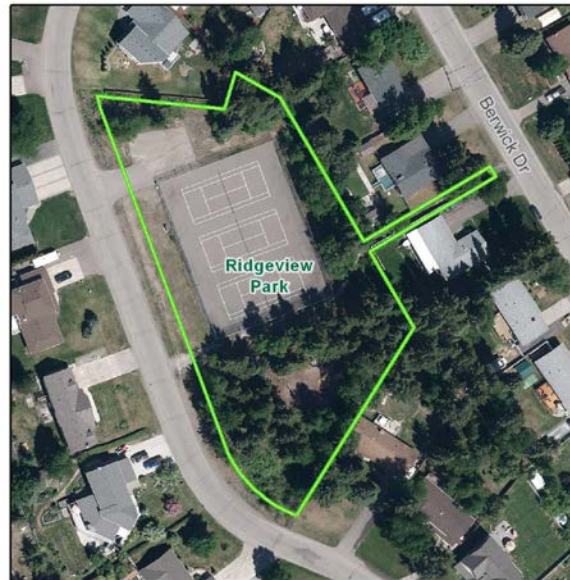
7/15

SAFETY & SECURITY

5/6

ENVIRONMENT

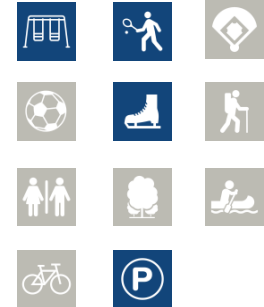
0/6



SUMMARY

- Neighbourhood Park with nature access and amenities
- Older playground equipment
- Tennis courts used as an ice rink in the winter
- Only developed park in the neighbourhood

INFRASTRUCTURE & AMENITIES



UTILITIES





CLASSIFICATION: NEIGHBOURHOOD
LOCATION: 1902 VICTORIA STREET
NEIGHBOURHOOD: RON BRENT

PARK SITE

12/12

INFRASTRUCTURE

18/63

NEIGHBOURHOOD CONTEXT

13/15

SAFETY & SECURITY

6/6

ENVIRONMENT

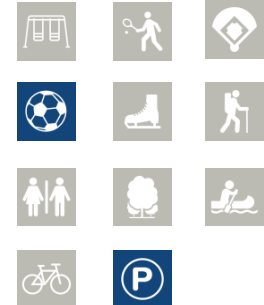
0/6



SUMMARY

- Neighbourhood Park adjacent to Ron Brent School and Connaught Youth Centre
- Central to neighbourhood with open areas
- Sports field used by school and community

INFRASTRUCTURE & AMENITIES



UTILITIES





CLASSIFICATION: GREEN SPACE
LOCATION: 2414 SADLER DRIVE
NEIGHBOURHOOD: RIDGEVIEW

PARK SITE

3/12

INFRASTRUCTURE

11/63

NEIGHBOURHOOD CONTEXT

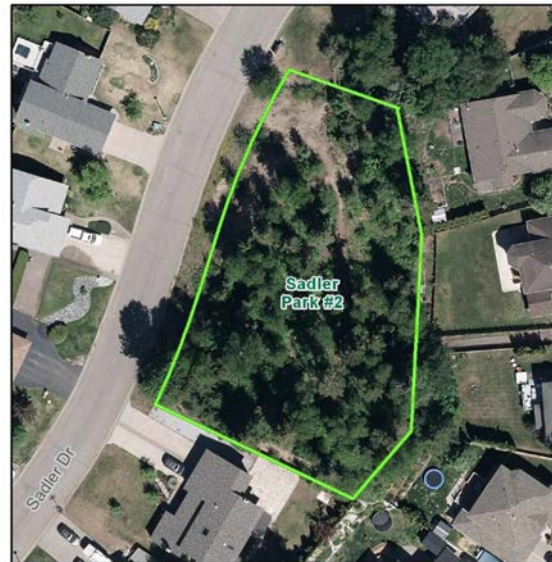
4/15

SAFETY & SECURITY

4/6

ENVIRONMENT

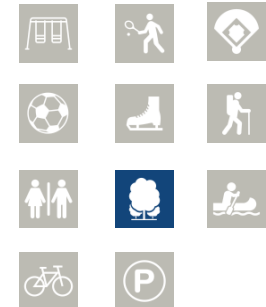
0/6



SUMMARY

- Small green space
- Located near the edge of the neighbourhood
- Not connected to the neighbourhood

INFRASTRUCTURE & AMENITIES



UTILITIES





CLASSIFICATION: NEIGHBOURHOOD
LOCATION: 2783 SANDERSON ROAD
NEIGHBOURHOOD: LOWER PEDEN HILL

PARK SITE

6/12

INFRASTRUCTURE

16/63

NEIGHBOURHOOD CONTEXT

8/15

SAFETY & SECURITY

6/6

ENVIRONMENT

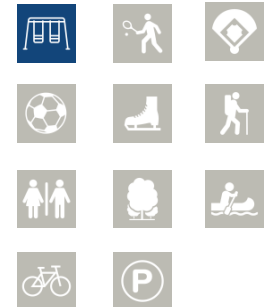
0/6



SUMMARY

- Small Neighbourhood Park with open area
- Older playground equipment
- Only developed park within the neighbourhood
- Close to Peden Hill School

INFRASTRUCTURE & AMENITIES



UTILITIES





CLASSIFICATION: GREEN SPACE
LOCATION: 3313 SETON CRESCENT
NEIGHBOURHOOD: VALLEYVIEW/SETON

PARK SITE

7/12

INFRASTRUCTURE

14/63

NEIGHBOURHOOD CONTEXT

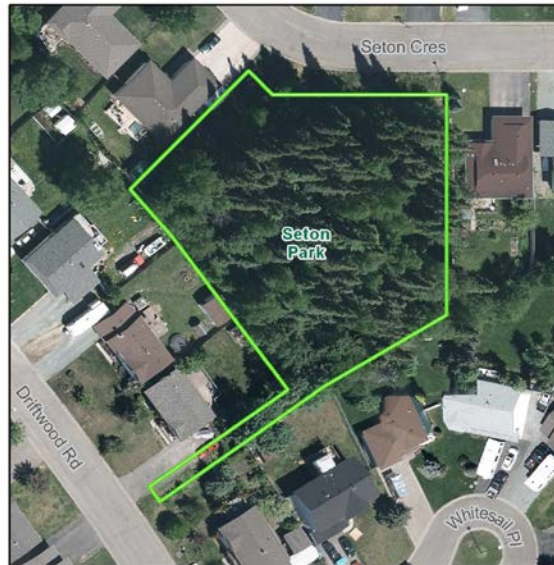
7/15

SAFETY & SECURITY

5/6

ENVIRONMENT

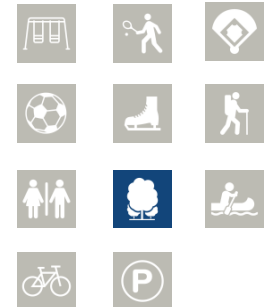
0/6



SUMMARY

- Small undeveloped green space
- Smaller well established neighbourhood

INFRASTRUCTURE & AMENITIES



UTILITIES





CLASSIFICATION: NEIGHBOURHOOD
LOCATION: 2552 ELLISON DRIVE
NEIGHBOURHOOD: SEYMOUR

PARK SITE

8/12

INFRASTRUCTURE

15/63

NEIGHBOURHOOD CONTEXT

7/15

SAFETY & SECURITY

5/6

ENVIRONMENT

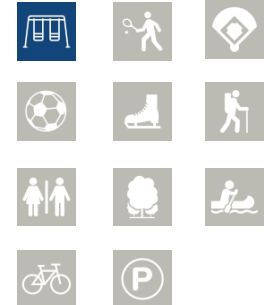
0/6



SUMMARY

- Small Neighbourhood Park with limited sight lines
- Older playground equipment
- Only developed park in the neighbourhood
- Near Francophone School

INFRASTRUCTURE & AMENITIES



UTILITIES





CLASSIFICATION: NEIGHBOURHOOD
LOCATION: 1860 SINCLAIR ROAD
NEIGHBOURHOOD: VAN BIEN

PARK SITE

6/12

INFRASTRUCTURE

22/63

NEIGHBOURHOOD CONTEXT

7/15

SAFETY & SECURITY

6/6

ENVIRONMENT

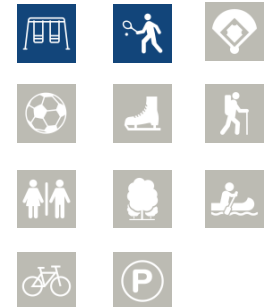
0/6



SUMMARY

- Neighbourhood Park with multiple amenities
- Newer playground equipment
- Older hard surface court
- Central to a high density neighbourhood

INFRASTRUCTURE & AMENITIES



UTILITIES





CLASSIFICATION: NEIGHBOURHOOD
LOCATION: 4650 SNOWDROP DRIVE
NEIGHBOURHOOD: HEATHER ROAD

PARK SITE

8/12

INFRASTRUCTURE

19/63

NEIGHBOURHOOD CONTEXT

6/15

SAFETY & SECURITY

4/6

ENVIRONMENT

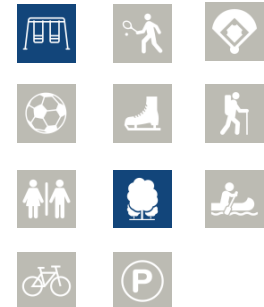
0/6



SUMMARY

- Small Neighbourhood Park with limited sight lines
- Older playground equipment
- Close to Heather Road Park and Heather Park School

INFRASTRUCTURE & AMENITIES



UTILITIES





CLASSIFICATION:

SPECIAL PURPOSE

LOCATION:

1200 LA SALLE AVENUE

NEIGHBOURHOOD:

SOUTH FORT GEORGE

PARK SITE

9/12

INFRASTRUCTURE

41/63

NEIGHBOURHOOD CONTEXT

11/15

SAFETY & SECURITY

6/6

ENVIRONMENT

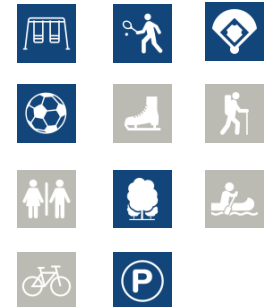
0/6



SUMMARY

- A Special Purpose area that was a former school and is now a Family Resource Centre
- Newer playground with older hard surface courts and sports fields
- Adjacent to Jasper Park

INFRASTRUCTURE & AMENITIES



UTILITIES





CLASSIFICATION: NEIGHBOURHOOD
LOCATION: 7043 SOUTHRIDGE AVENUE
NEIGHBOURHOOD: O'GRADY

PARK SITE

6/12

INFRASTRUCTURE

27/63

NEIGHBOURHOOD CONTEXT

12/15

SAFETY & SECURITY

6/6

ENVIRONMENT

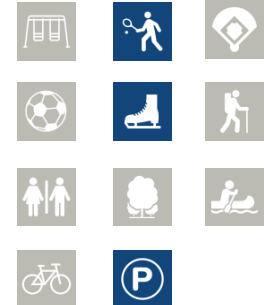
0/6



SUMMARY

- Newer hard surface court used as an ice rink in the winter
- Parking lot and multi use trail
- Adjacent to Kode Pit and in a growing residential area

INFRASTRUCTURE & AMENITIES



UTILITIES





CLASSIFICATION: NEIGHBOURHOOD
LOCATION: 7994 ST JOHN CRESCENT
NEIGHBOURHOOD: O'GRADY

PARK SITE

5/12

INFRASTRUCTURE

21/63

NEIGHBOURHOOD CONTEXT

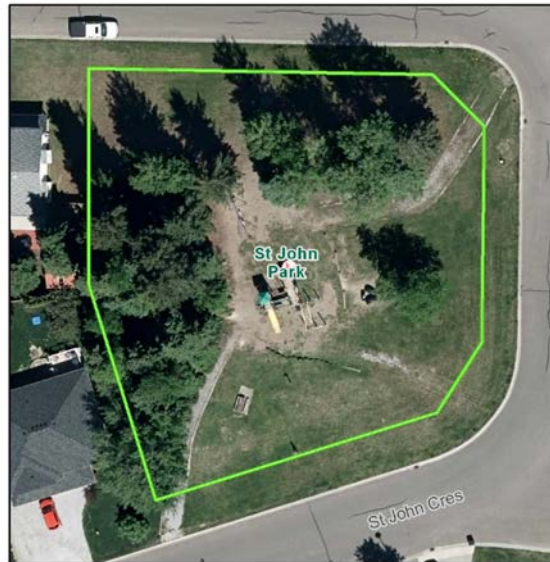
7/15

SAFETY & SECURITY

6/6

ENVIRONMENT

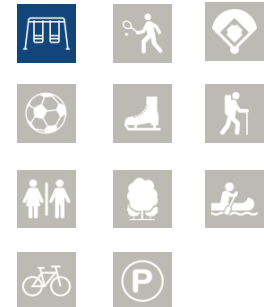
0/6



SUMMARY

- Small Neighbourhood Park with nature access
- Older playground equipment
- Smaller, well-established neighbourhood

INFRASTRUCTURE & AMENITIES



UTILITIES





CLASSIFICATION: GREEN SPACE
LOCATION: 8446 ST LAWRENCE PARK
NEIGHBOURHOOD: SOUTHRIDGE

PARK SITE

6/12

INFRASTRUCTURE

21/63

NEIGHBOURHOOD CONTEXT

7/15

SAFETY & SECURITY

5/6

ENVIRONMENT

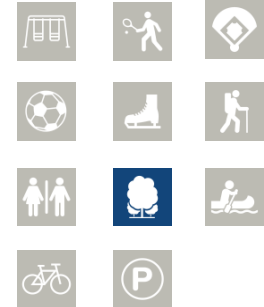
0/6



SUMMARY

- Small green space area
- No developed parks within the growing residential area

INFRASTRUCTURE & AMENITIES



UTILITIES





CLASSIFICATION: NEIGHBOURHOOD
LOCATION: 7540 ST MARY CRESCENT
NEIGHBOURHOOD: SOUTHRIDGE

PARK SITE

7/12

INFRASTRUCTURE

29/63

NEIGHBOURHOOD CONTEXT

8/15

SAFETY & SECURITY

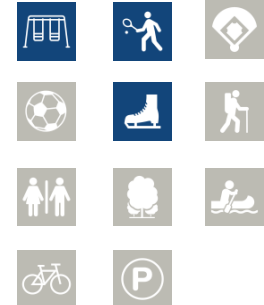
6/6

ENVIRONMENT

0/6



INFRASTRUCTURE & AMENITIES



UTILITIES



SUMMARY

- Small Neighbourhood Park with nature access and multiple amenities
- Older playground equipment and hard surface court used as an ice rink in the winter
- Connected to the neighbourhood by walkway



CLASSIFICATION: NEIGHBOURHOOD
LOCATION: 7700 ST MATHEW PLACE
NEIGHBOURHOOD: SOUTHRIDGE

PARK SITE

6/12

INFRASTRUCTURE

28/63

NEIGHBOURHOOD CONTEXT

10/15

SAFETY & SECURITY

5/6

ENVIRONMENT

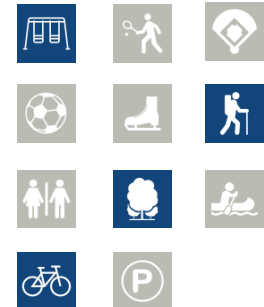
0/6



SUMMARY

- Small Neighbourhood Park with nature access
- Older playground equipment
- Connected to the neighbourhood by walkway

INFRASTRUCTURE & AMENITIES



UTILITIES





CLASSIFICATION: NEIGHBOURHOOD
LOCATION: 2748 STARLANE DRIVE
NEIGHBOURHOOD: UPPER PEDEN HILL

PARK SITE

7/12

INFRASTRUCTURE

33/63

NEIGHBOURHOOD CONTEXT

9/15

SAFETY & SECURITY

4/6

ENVIRONMENT

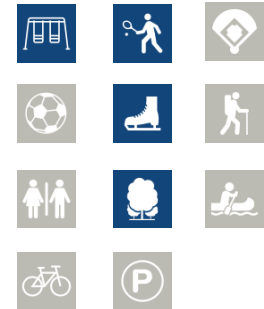
1/6



SUMMARY

- Neighbourhood Park with nature access
- Older playground equipment and hard surface court used as an ice rink in the winter
- Adjacent to Prudente Park

INFRASTRUCTURE & AMENITIES



UTILITIES





CLASSIFICATION: GREEN SPACE
LOCATION: 4664 STAUBLE ROAD
NEIGHBOURHOOD: HART HIGHLANDS

PARK SITE

8/12

INFRASTRUCTURE

8/63

NEIGHBOURHOOD CONTEXT

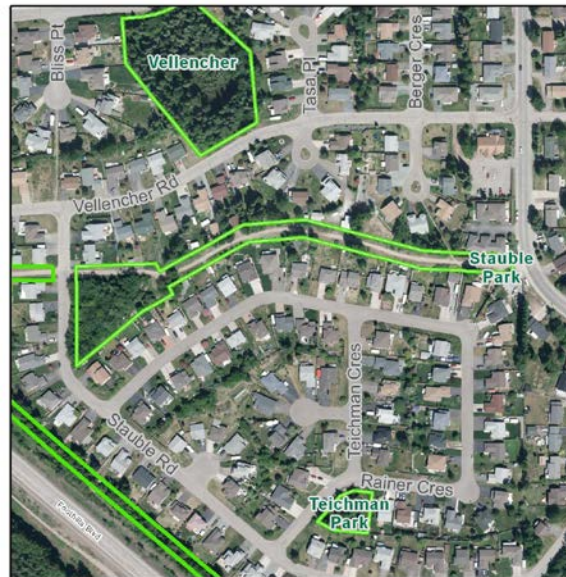
8/15

SAFETY & SECURITY

5/6

ENVIRONMENT

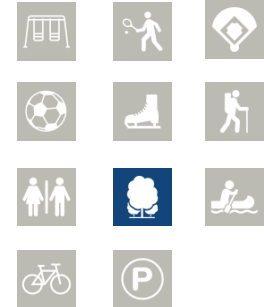
0/6



SUMMARY

- Undeveloped green space
- Linear utility corridor is an informal trail connection
- No developed parks in the neighbourhood

INFRASTRUCTURE & AMENITIES



UTILITIES





CLASSIFICATION: NEIGHBOURHOOD
LOCATION: 1091 STIRLING DRIVE
NEIGHBOURHOOD: HERITAGE NORTH

PARK SITE

7/12

INFRASTRUCTURE

25/63

NEIGHBOURHOOD CONTEXT

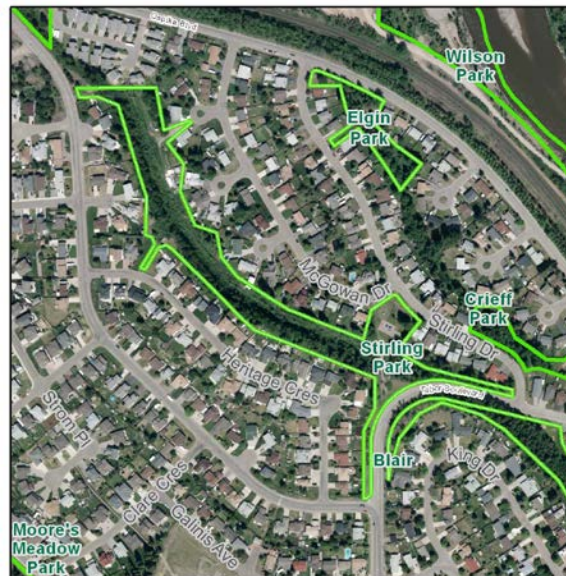
7/15

SAFETY & SECURITY

5/6

ENVIRONMENT

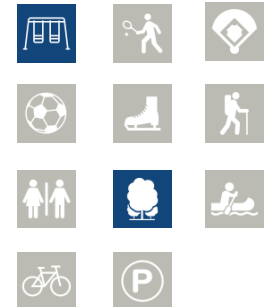
0/6



SUMMARY

- Neighbourhood Park with a developed open lawn and steeply sloped space
- Newer playground equipment

INFRASTRUCTURE & AMENITIES



UTILITIES





CLASSIFICATION: COMMUNITY
LOCATION: 1991 STRATHCONA
NEIGHBOURHOOD: VLA

PARK SITE

9/12

INFRASTRUCTURE

36/63

NEIGHBOURHOOD CONTEXT

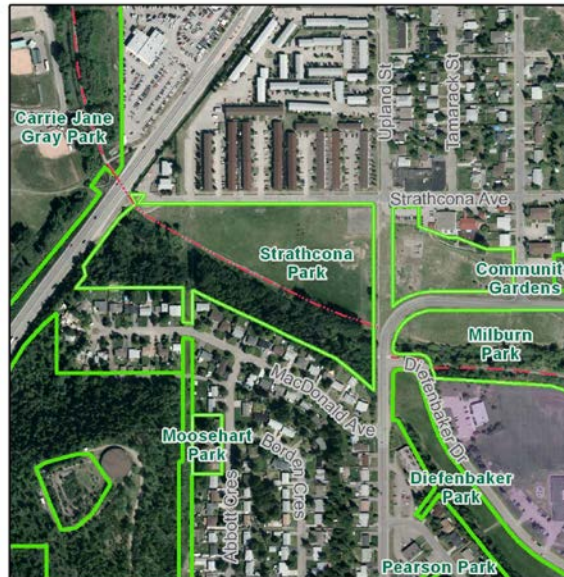
13/15

SAFETY & SECURITY

3/6

ENVIRONMENT

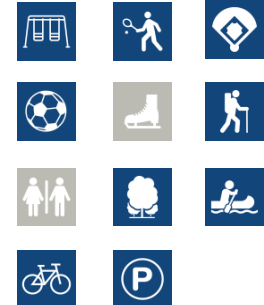
5/6



SUMMARY

- Community Park with multiple amenities
- Newer playground with older hard surface court, ball diamond and sports field
- Multi use trail is part of the Heritage River Trail System
- Central to a high density neighbourhood

INFRASTRUCTURE & AMENITIES



UTILITIES





CLASSIFICATION: GREEN SPACE
LOCATION: 646 STUART DRIVE
NEIGHBOURHOOD: SPRUCELAND

PARK SITE

6/12

INFRASTRUCTURE

11/63

NEIGHBOURHOOD CONTEXT

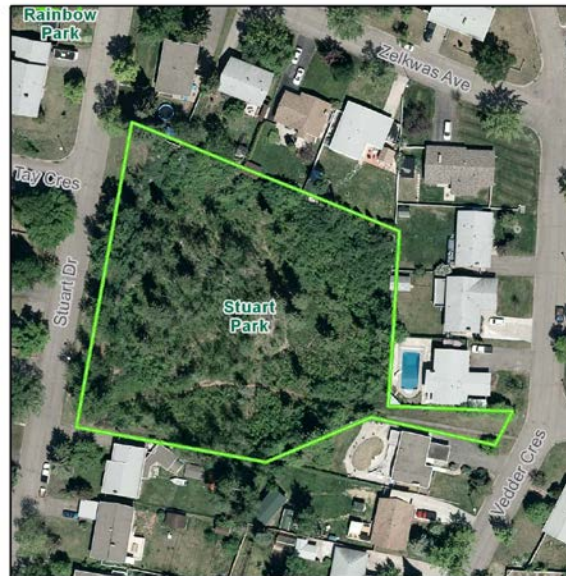
8/15

SAFETY & SECURITY

4/6

ENVIRONMENT

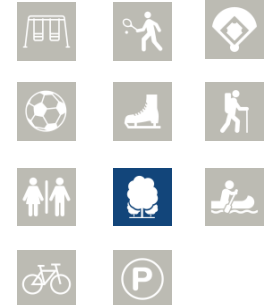
0/6



SUMMARY

- Small green space area
- Sloped hollow with connection to neighbourhood

INFRASTRUCTURE & AMENITIES



UTILITIES





CLASSIFICATION: NEIGHBOURHOOD
LOCATION: 2935 SYCAMORE CRESCENT
NEIGHBOURHOOD: WESTWOOD

PARK SITE

5/12

INFRASTRUCTURE

18/63

NEIGHBOURHOOD CONTEXT

9/15

SAFETY & SECURITY

5/6

ENVIRONMENT

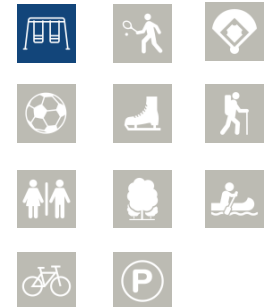
0/6



SUMMARY

- Neighbourhood Park with open area
- Newer playground equipment
- Connected to neighbourhood with walkways and stairway
- Near Cherry Park

INFRASTRUCTURE & AMENITIES



UTILITIES





CLASSIFICATION: GREEN SPACE
LOCATION: 6012 TEICHMAN CRESCENT
NEIGHBOURHOOD: HART HIGHLANDS

PARK SITE

6/12

INFRASTRUCTURE

13/63

NEIGHBOURHOOD CONTEXT

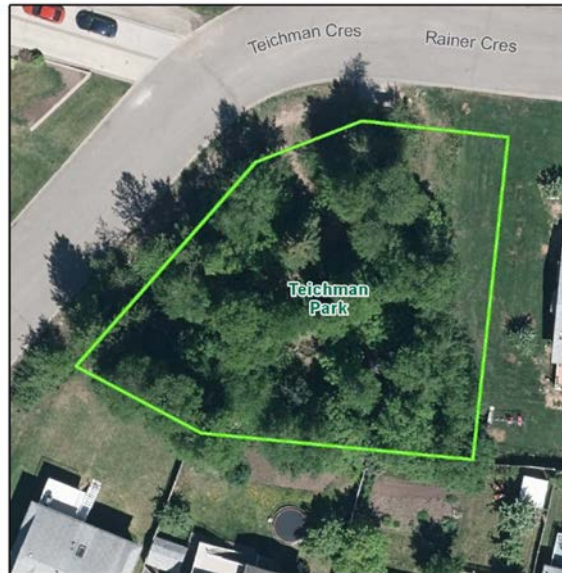
6/15

SAFETY & SECURITY

5/6

ENVIRONMENT

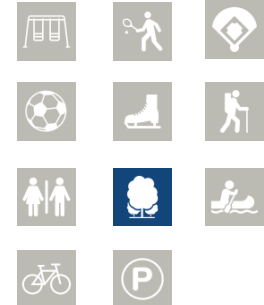
0/6



SUMMARY

- Small undeveloped green space
- Well established neighbourhood

INFRASTRUCTURE & AMENITIES



UTILITIES





CLASSIFICATION: NEIGHBOURHOOD
LOCATION: 2727 VANIER DRIVE
NEIGHBOURHOOD: WESTWOOD

PARK SITE

12/12

INFRASTRUCTURE

14/63

NEIGHBOURHOOD CONTEXT

12/15

SAFETY & SECURITY

6/6

ENVIRONMENT

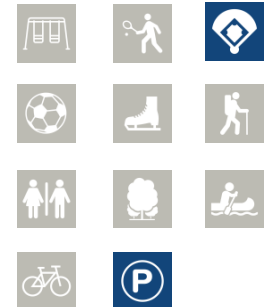
0/6



SUMMARY

- Neighbourhood Park with open area and informal ball diamonds
- Adjacent to Westwood School
- Parking lot

INFRASTRUCTURE & AMENITIES



UTILITIES





CLASSIFICATION: GREEN SPACE
LOCATION: 4500 VELLECHER ROAD
NEIGHBOURHOOD: HART HIGHLANDS

PARK SITE

5/12

INFRASTRUCTURE

14/63

NEIGHBOURHOOD CONTEXT

6/15

SAFETY & SECURITY

4/6

ENVIRONMENT

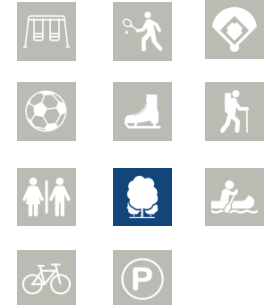
0/6



SUMMARY

- Larger undeveloped green space
- Steeply sloped area

INFRASTRUCTURE & AMENITIES



UTILITIES





CLASSIFICATION: ATHLETIC
LOCATION: 4855 HEATHER ROAD
NEIGHBOURHOOD: HEATHER ROAD

PARK SITE

8/12

INFRASTRUCTURE

34/63

NEIGHBOURHOOD CONTEXT

7/15

SAFETY & SECURITY

5/6

ENVIRONMENT

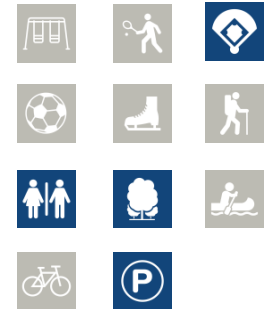
0/6



SUMMARY

- Athletic Park with ball diamonds (four-plex) used by PG Youth Baseball
- Clubhouse and parking
- Adjacent to Heather Road Park

INFRASTRUCTURE & AMENITIES



UTILITIES





CLASSIFICATION: GREEN SPACE
LOCATION: 3089 WALLACE CRESCENT
NEIGHBOURHOOD: HART HIGHLANDS

PARK SITE

4/12

INFRASTRUCTURE

11/63

NEIGHBOURHOOD CONTEXT

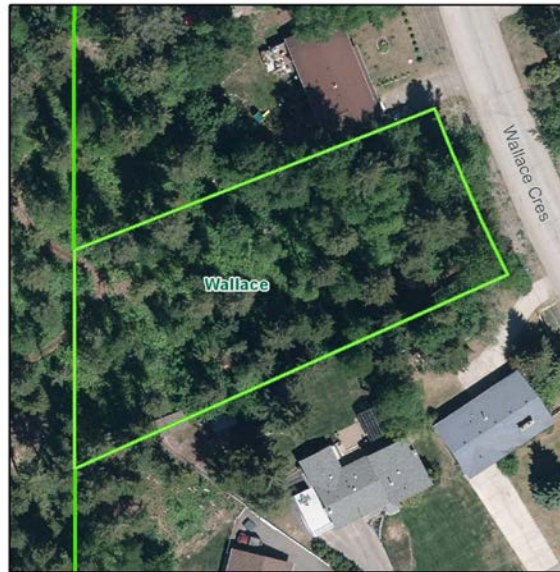
10/15

SAFETY & SECURITY

5/6

ENVIRONMENT

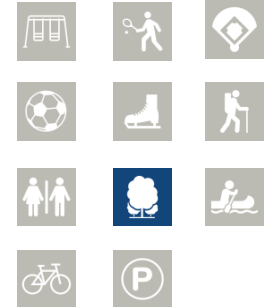
0/6



SUMMARY

- Small undeveloped green space
- Adjacent to green space along Foothills Blvd.

INFRASTRUCTURE & AMENITIES



UTILITIES





CLASSIFICATION: NEIGHBOURHOOD
LOCATION: WATROUS STREET
NEIGHBOURHOOD: CRESCENTS

PARK SITE

7/12

INFRASTRUCTURE

34/63

NEIGHBOURHOOD CONTEXT

8/15

SAFETY & SECURITY

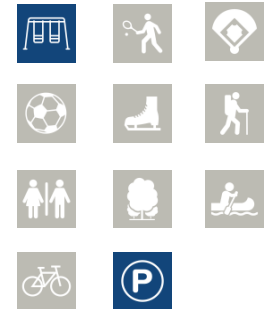
6/6

ENVIRONMENT

0/6



INFRASTRUCTURE & AMENITIES



UTILITIES



SUMMARY

- Small Neighbourhood Park with multiple amenities
- Older playground equipment
- Lawn bowling facility with storage building and gazebo
- Small well-established neighbourhood



CLASSIFICATION: NEIGHBOURHOOD
LOCATION: 3703 HIGHWAY 16
NEIGHBOURHOOD: WESTGATE

PARK SITE

10/12

INFRASTRUCTURE

21/63

NEIGHBOURHOOD CONTEXT

12/15

SAFETY & SECURITY

5/6

ENVIRONMENT

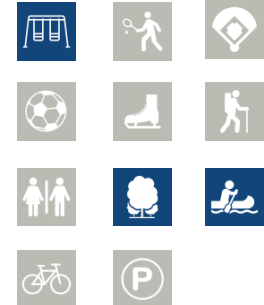
4/6



SUMMARY

- Newer Neighbourhood Park in growing residential area
- New playground equipment
- Connected to neighbourhood by walkway

INFRASTRUCTURE & AMENITIES



UTILITIES





CLASSIFICATION: NEIGHBOURHOOD
LOCATION: 4750 1st AVENUE
NEIGHBOURHOOD: HERITAGE NORTH

PARK SITE

8/12

INFRASTRUCTURE

30/63

NEIGHBOURHOOD CONTEXT

12/15

SAFETY & SECURITY

6/6

ENVIRONMENT

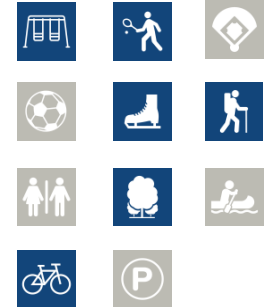
0/6



SUMMARY

- Open Neighbourhood Park adjacent to Moore's Meadow Nature Park
- Newer playground equipment and hard surface court used as an ice rink in the winter
- Rustic trail system

INFRASTRUCTURE & AMENITIES



UTILITIES

